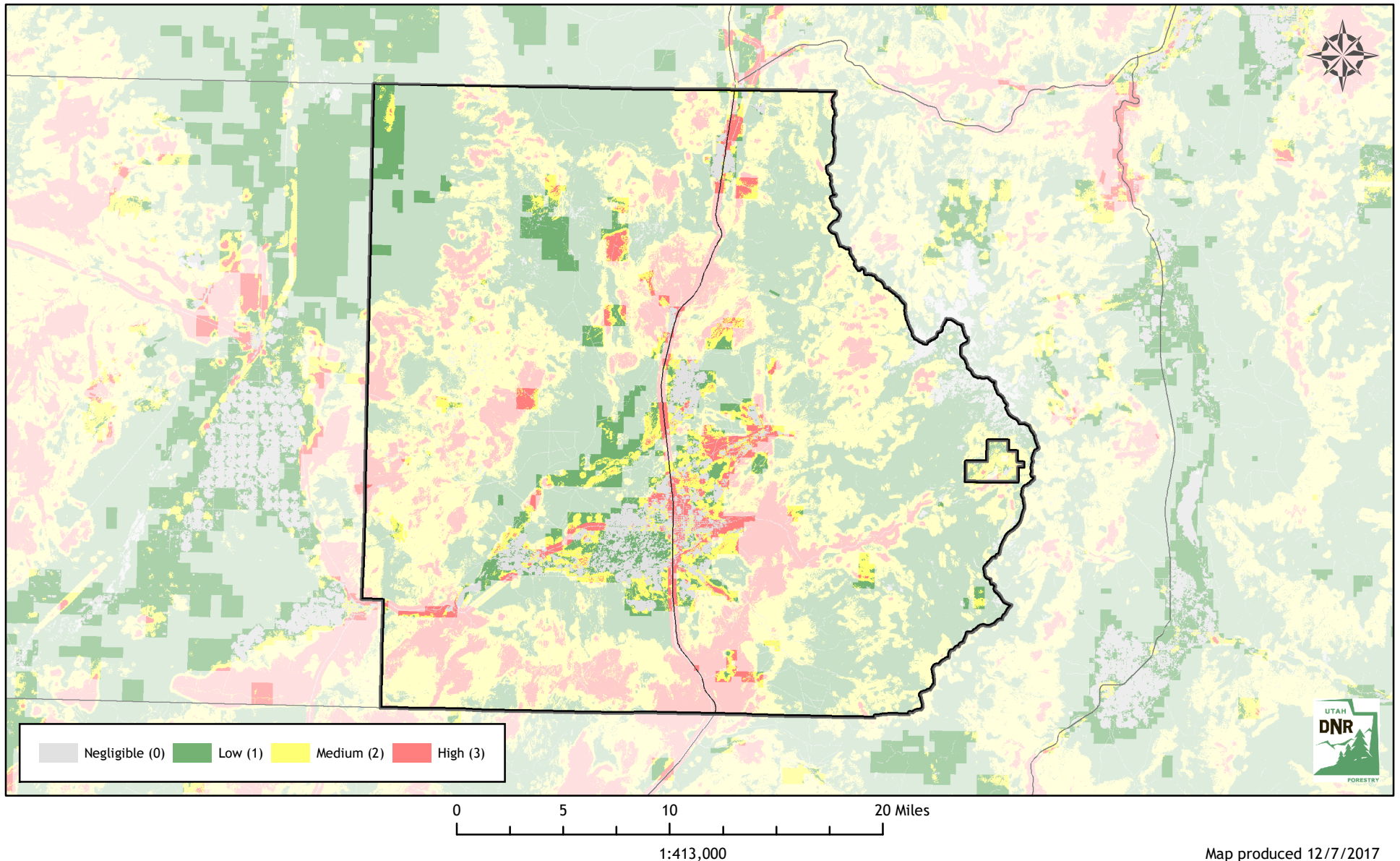


Utah Wildfire Risk Assessment

Beaver County 1 Service District

Derived from www.UtahWildfireRisk.utah.gov

Municipal and Unincorporated Rates
Medium: \$0.30/acre, High: \$0.40/acre
Medium: \$2.00/acre, High: \$3.50/acre
Low Risk: 38,683 Acres (57%)
Medium Risk: 19,051 Acres (28%) - \$7,513
High Risk: 10,186 Acres (15%) - \$8,244
Risk Assessment Total: \$15,757

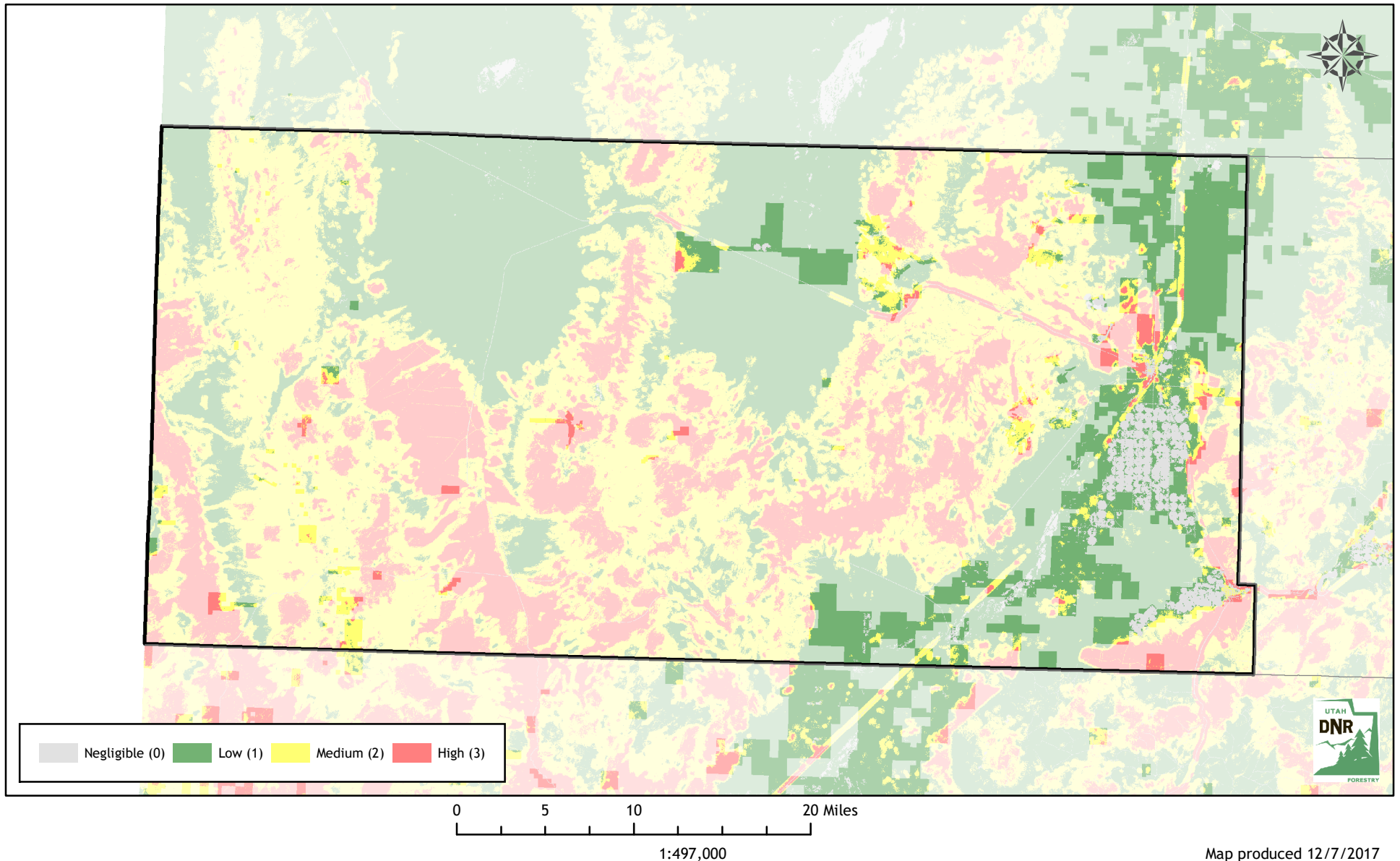


Utah Wildfire Risk Assessment

Beaver County 2 Service District

Derived from www.UtahWildfireRisk.utah.gov

Municipal and Unincorporated Rates
Medium: \$0.30/acre, High: \$0.40/acre
Medium: \$2.00/acre, High: \$3.50/acre
Low Risk: 105,210 Acres (76%)
Medium Risk: 24,677 Acres (18%) - \$8,237
High Risk: 8,713 Acres (6%) - \$4,523
Risk Assessment Total: \$12,760

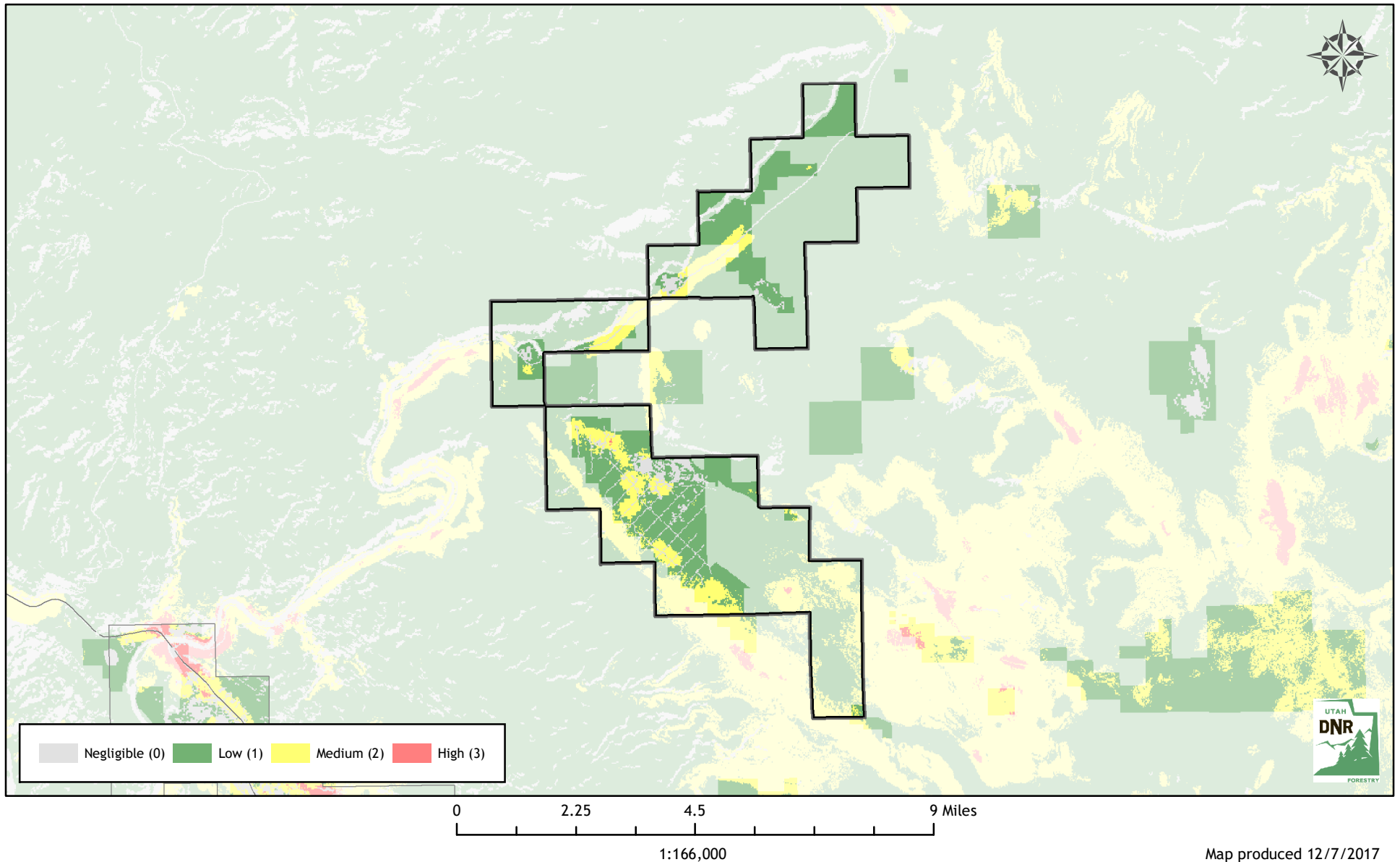


Utah Wildfire Risk Assessment

Castle Valley Service District

Derived from www.UtahWildfireRisk.utah.gov

Municipal and Unincorporated Rates
Medium: \$0.30/acre, High: \$0.40/acre
Medium: \$2.00/acre, High: \$3.50/acre
Low Risk: 4,711 Acres (80%)
Medium Risk: 1,200 Acres (20%) - \$1,777
High Risk: 2 Acres (0%) - \$7
Risk Assessment Total: \$1,784

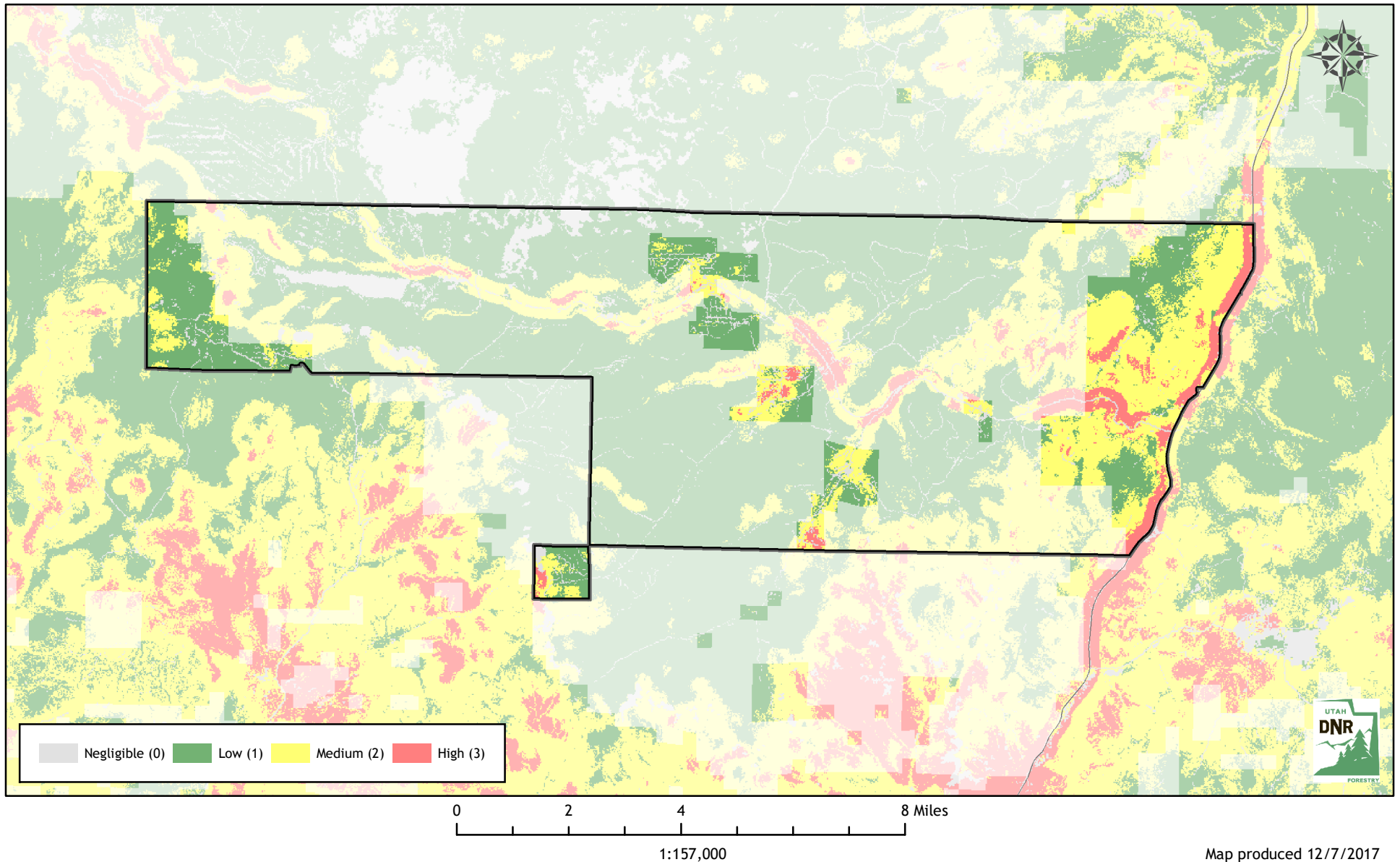


Utah Wildfire Risk Assessment

Cedar Mountain Service District

Derived from www.UtahWildfireRisk.utah.gov

Municipal and Unincorporated Rates
Medium: \$0.30/acre, High: \$0.40/acre
Medium: \$2.00/acre, High: \$3.50/acre
Low Risk: 6,522 Acres (48%)
Medium Risk: 5,945 Acres (44%) - \$1,783
High Risk: 1,196 Acres (9%) - \$478
Risk Assessment Total: \$2,262

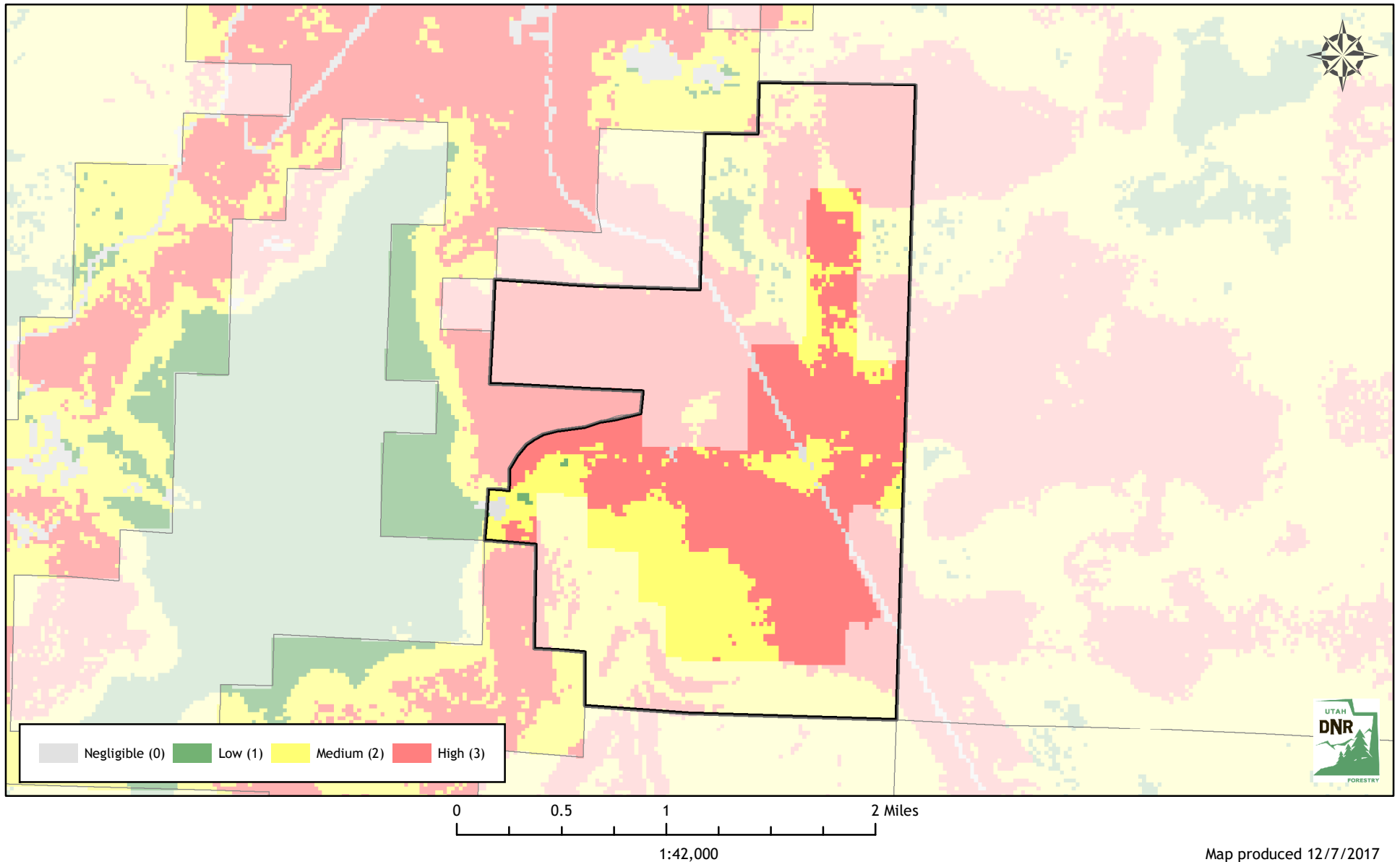


Utah Wildfire Risk Assessment

Dammeron Valley Service District

Derived from www.UtahWildfireRisk.utah.gov

Municipal and Unincorporated Rates
Medium: \$0.30/acre, High: \$0.40/acre
Medium: \$2.00/acre, High: \$3.50/acre
Low Risk: 23 Acres (2%)
Medium Risk: 417 Acres (33%) - \$125
High Risk: 806 Acres (65%) - \$322
Risk Assessment Total: \$447

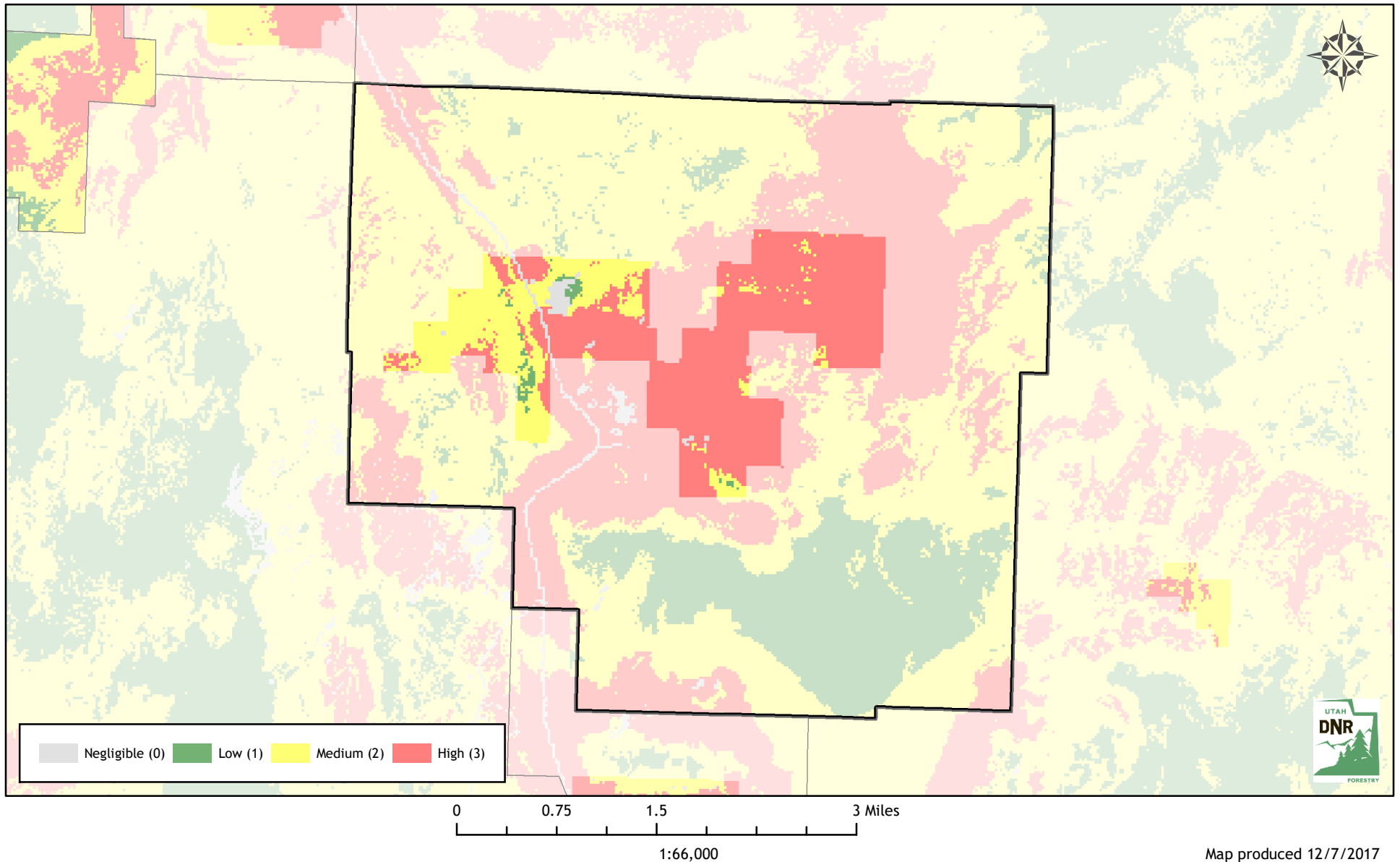


Utah Wildfire Risk Assessment

Diamond Valley Service District

Derived from www.UtahWildfireRisk.utah.gov

Municipal and Unincorporated Rates
Medium: \$0.30/acre, High: \$0.40/acre
Medium: \$2.00/acre, High: \$3.50/acre
Low Risk: 77 Acres (4%)
Medium Risk: 565 Acres (27%) - \$169
High Risk: 1,478 Acres (70%) - \$591
Risk Assessment Total: \$761

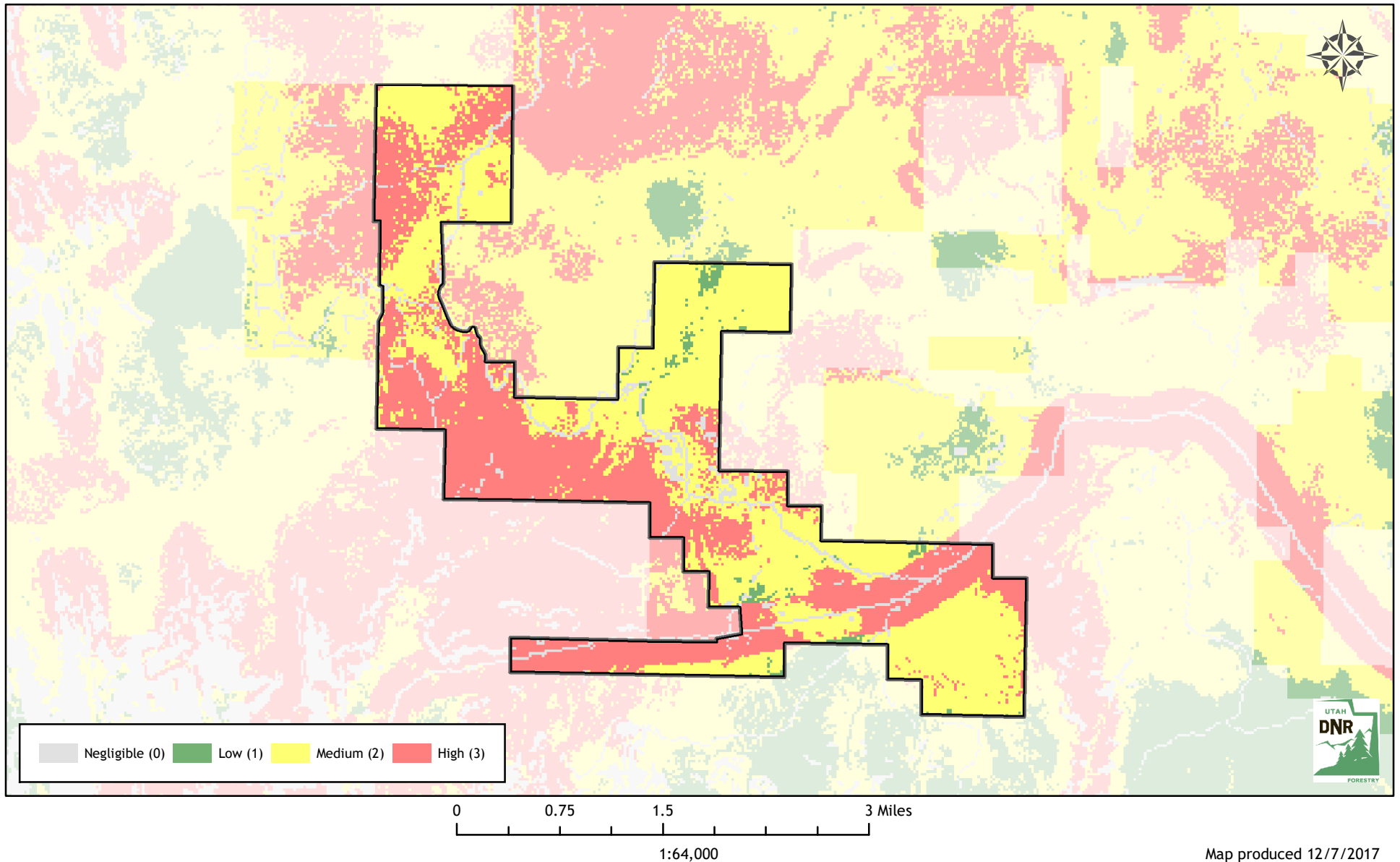


Utah Wildfire Risk Assessment

East Zion Service District

Derived from www.UtahWildfireRisk.utah.gov

Municipal and Unincorporated Rates
Medium: \$0.30/acre, High: \$0.40/acre
Medium: \$2.00/acre, High: \$3.50/acre
Low Risk: 319 Acres (7%)
Medium Risk: 2,365 Acres (51%) - \$710
High Risk: 1,982 Acres (42%) - \$793
Risk Assessment Total: \$1,502

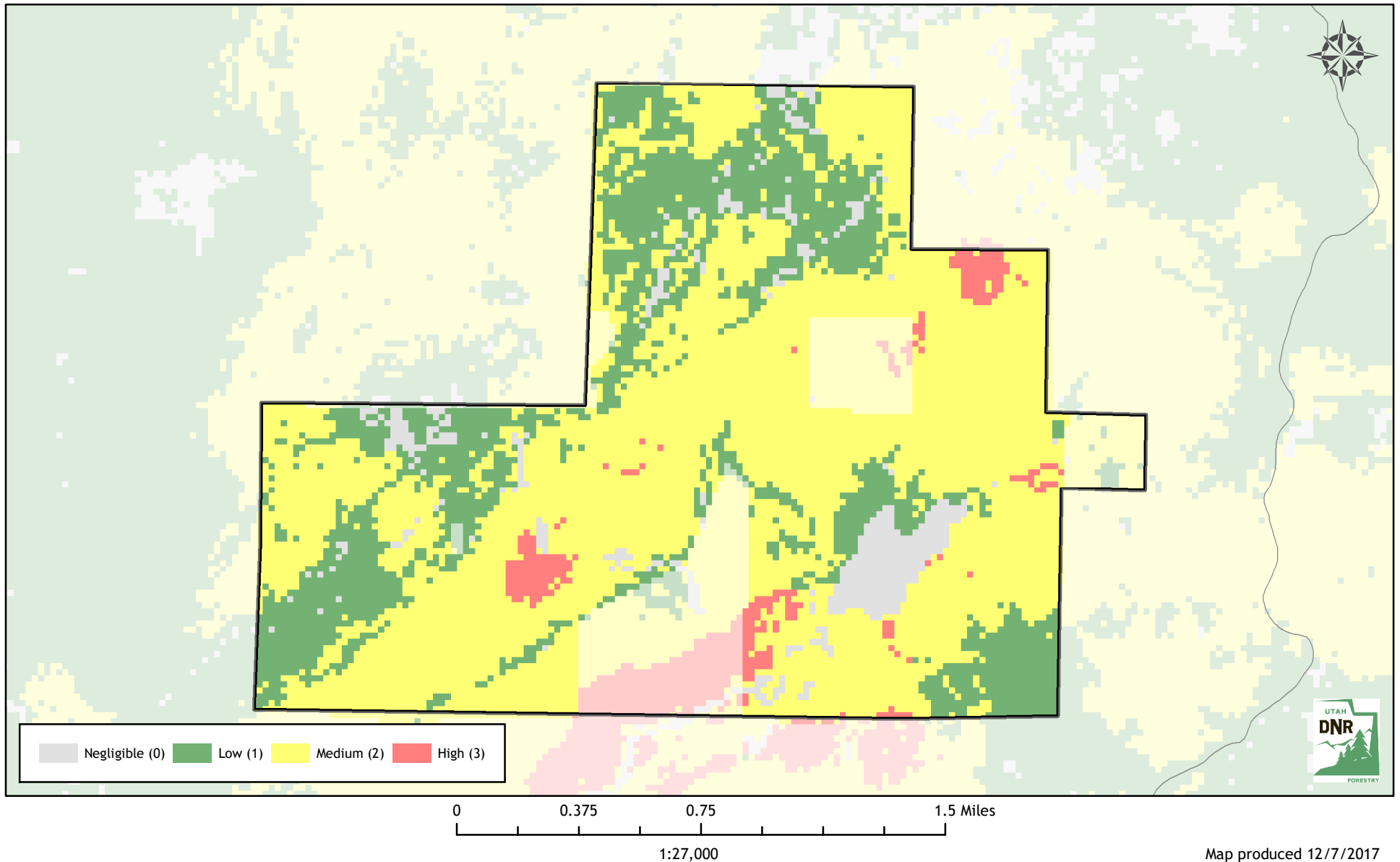


Utah Wildfire Risk Assessment

Elk Meadows Service District

Derived from www.UtahWildfireRisk.utah.gov

Municipal and Unincorporated Rates
Medium: \$0.30/acre, High: \$0.40/acre
Medium: \$2.00/acre, High: \$3.50/acre
Low Risk: 633 Acres (32%)
Medium Risk: 1,313 Acres (66%) - \$394
High Risk: 58 Acres (3%) - \$23
Risk Assessment Total: \$417

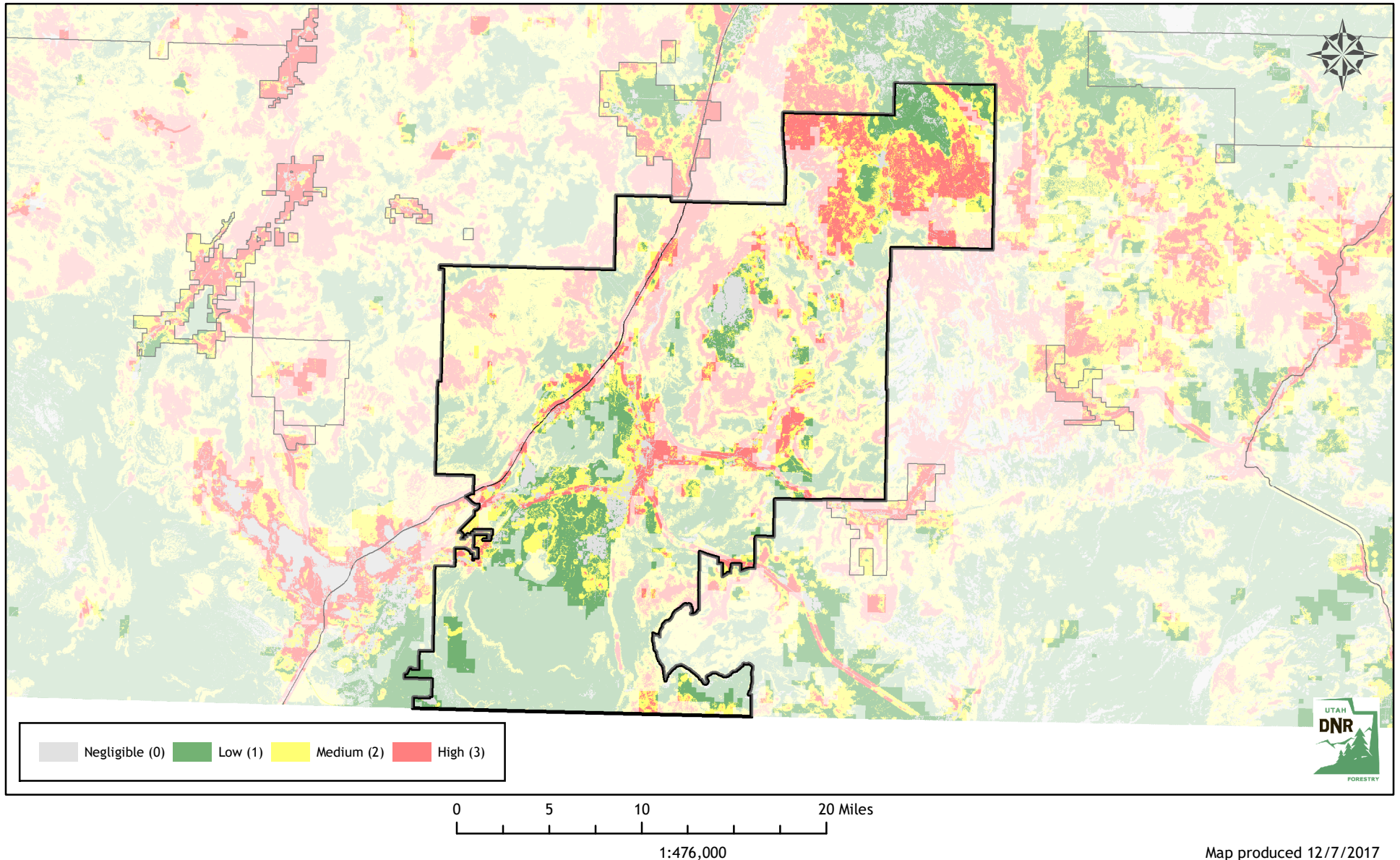


Utah Wildfire Risk Assessment

Hurricane Valley Service District

Derived from www.UtahWildfireRisk.utah.gov

Municipal and Unincorporated Rates
Medium: \$0.30/acre, High: \$0.40/acre
Medium: \$2.00/acre, High: \$3.50/acre
Low Risk: 43,885 Acres (38%)
Medium Risk: 40,768 Acres (36%) - \$35,555
High Risk: 29,872 Acres (26%) - \$32,170
Risk Assessment Total: \$67,725

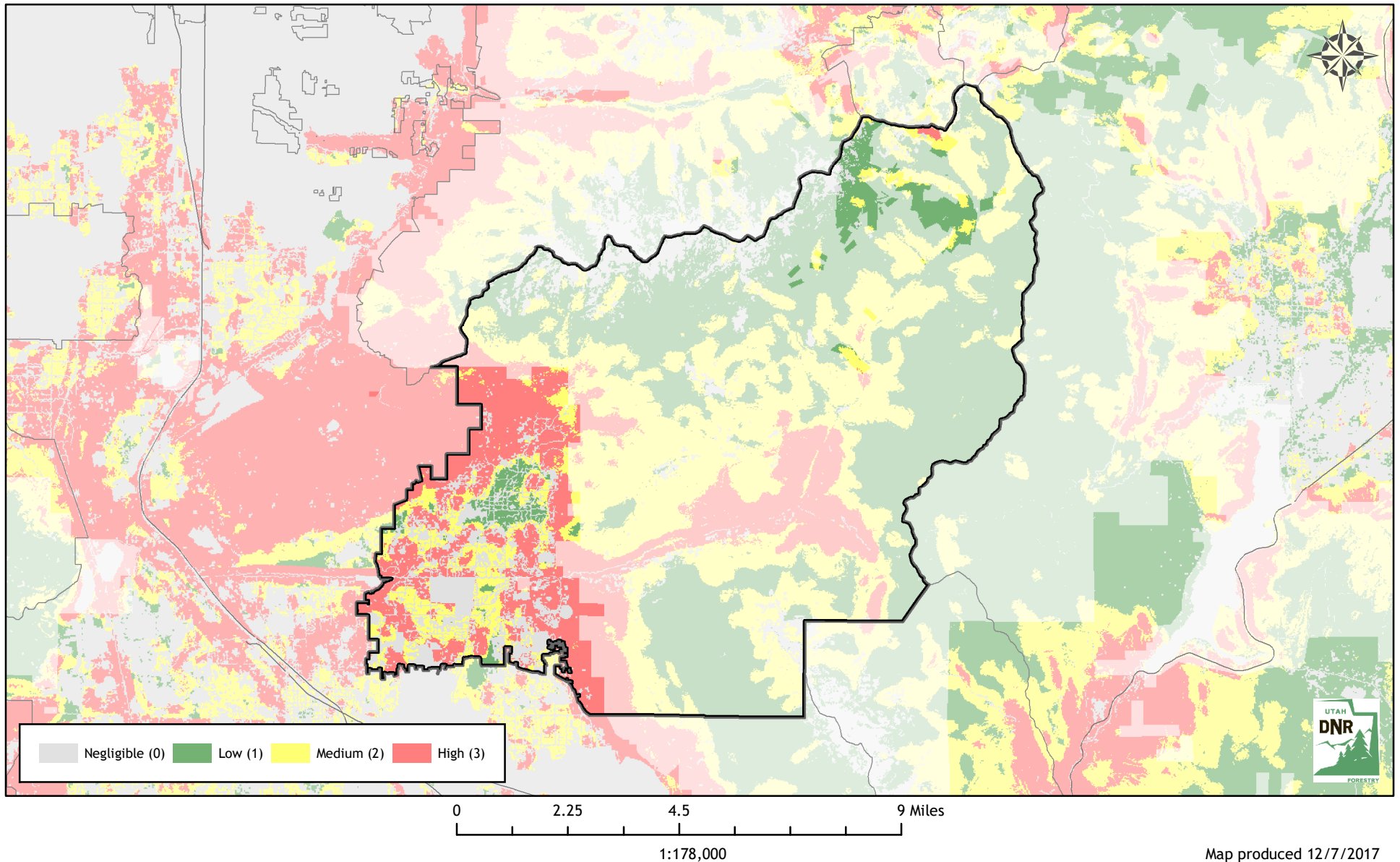


Utah Wildfire Risk Assessment

Lone Peak Service District

Derived from www.UtahWildfireRisk.utah.gov

Municipal and Unincorporated Rates
Medium: \$0.30/acre, High: \$0.40/acre
Medium: \$2.00/acre, High: \$3.50/acre
Low Risk: 6,038 Acres (40%)
Medium Risk: 3,001 Acres (20%) - \$4,720
High Risk: 6,218 Acres (41%) - \$19,846
Risk Assessment Total: \$24,566

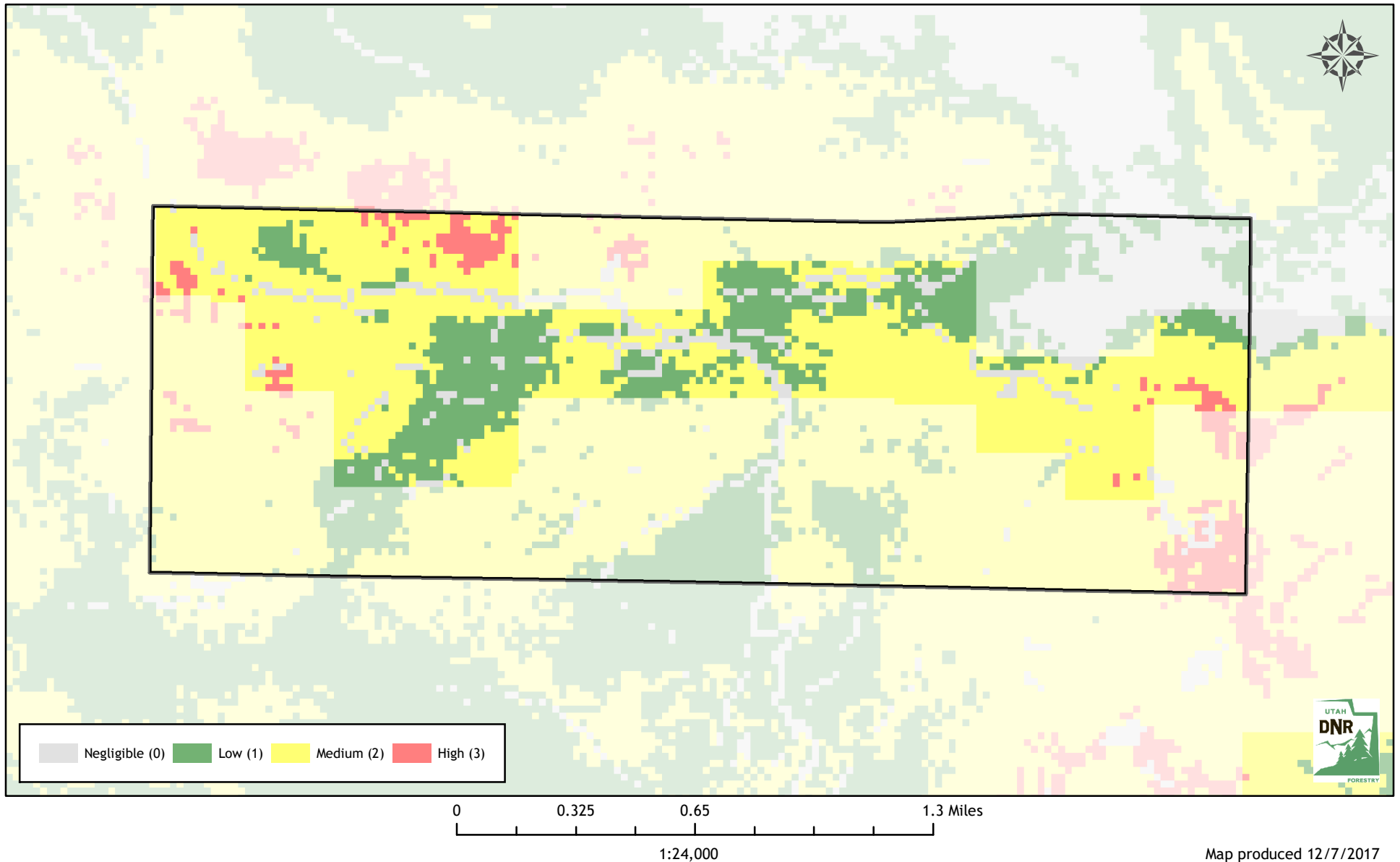


Utah Wildfire Risk Assessment

Mammoth Creek Service District

Derived from www.UtahWildfireRisk.utah.gov

Municipal and Unincorporated Rates
Medium: \$0.30/acre, High: \$0.40/acre
Medium: \$2.00/acre, High: \$3.50/acre
Low Risk: 257 Acres (34%)
Medium Risk: 474 Acres (62%) - \$142
High Risk: 29 Acres (4%) - \$12
Risk Assessment Total: \$154

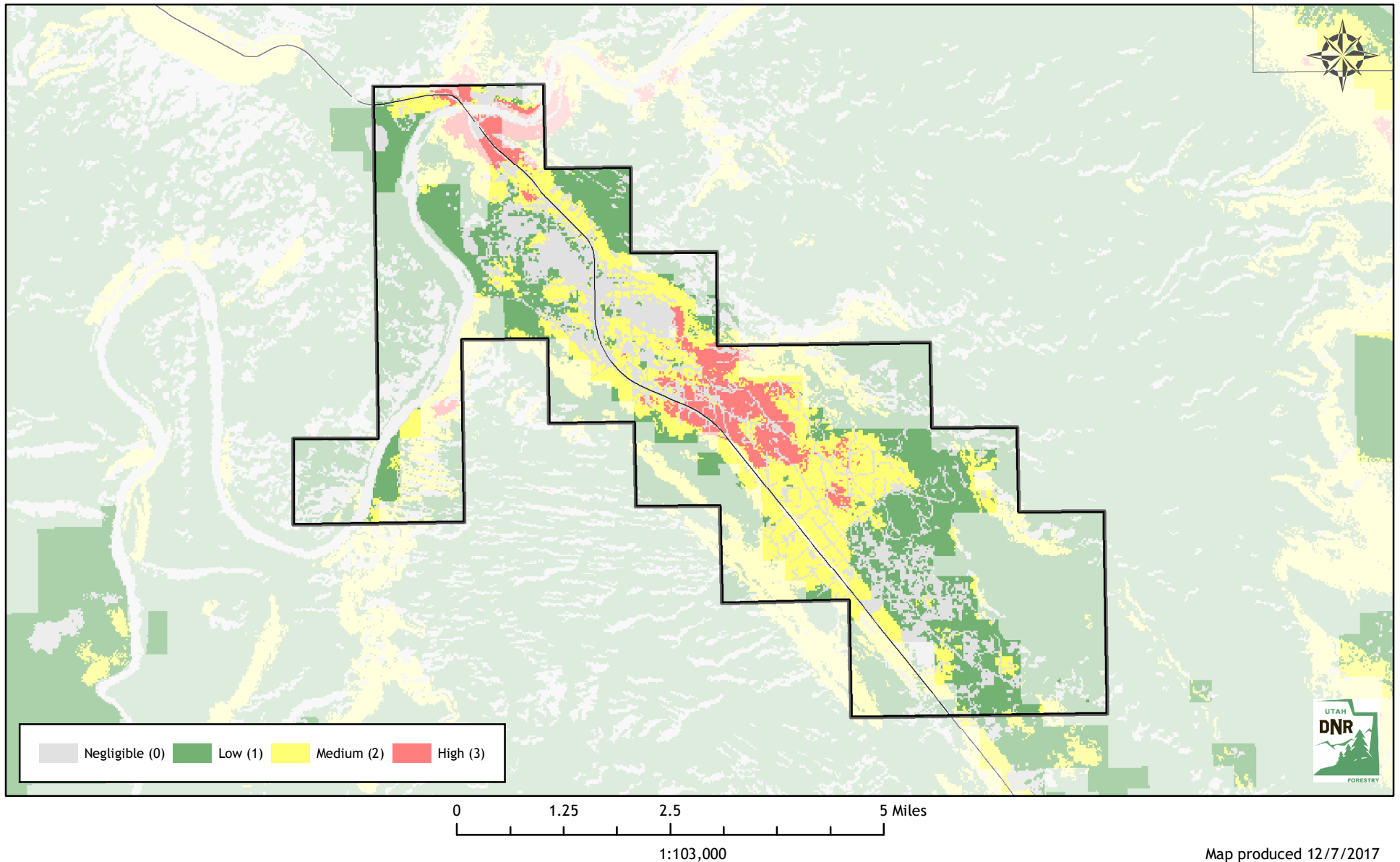


Utah Wildfire Risk Assessment

Moab Valley Service District

Derived from www.UtahWildfireRisk.utah.gov

Municipal and Unincorporated Rates
Medium: \$0.30/acre, High: \$0.40/acre
Medium: \$2.00/acre, High: \$3.50/acre
Low Risk: 5,472 Acres (60%)
Medium Risk: 2,817 Acres (31%) - \$2,110
High Risk: 806 Acres (9%) - \$926
Risk Assessment Total: \$3,036

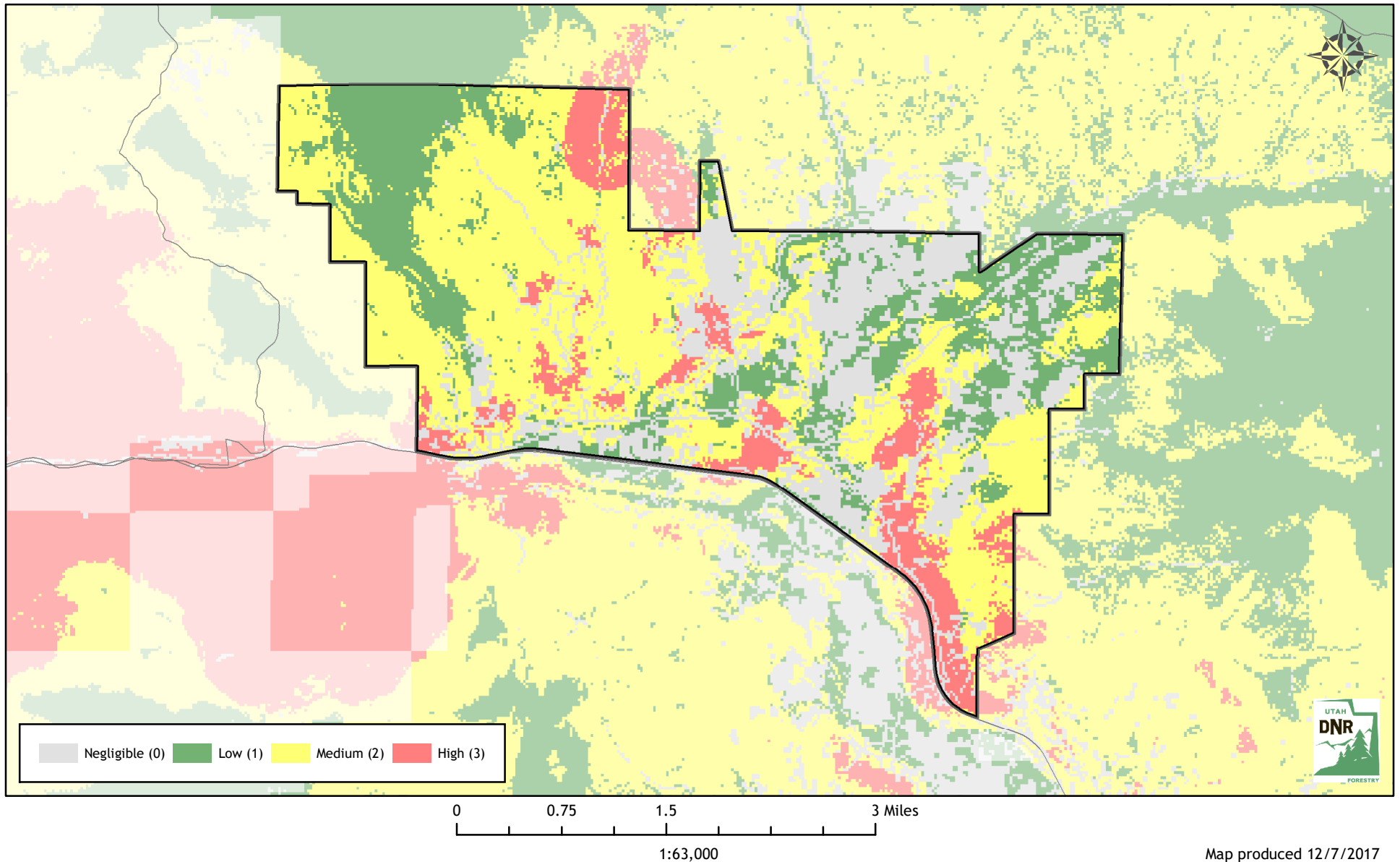


Utah Wildfire Risk Assessment

Mountain Green Service District

Derived from www.UtahWildfireRisk.utah.gov

Municipal and Unincorporated Rates
Medium: \$0.30/acre, High: \$0.40/acre
Medium: \$2.00/acre, High: \$3.50/acre
Low Risk: 3,658 Acres (45%)
Medium Risk: 3,606 Acres (44%) - \$1,082
High Risk: 839 Acres (10%) - \$336
Risk Assessment Total: \$1,417

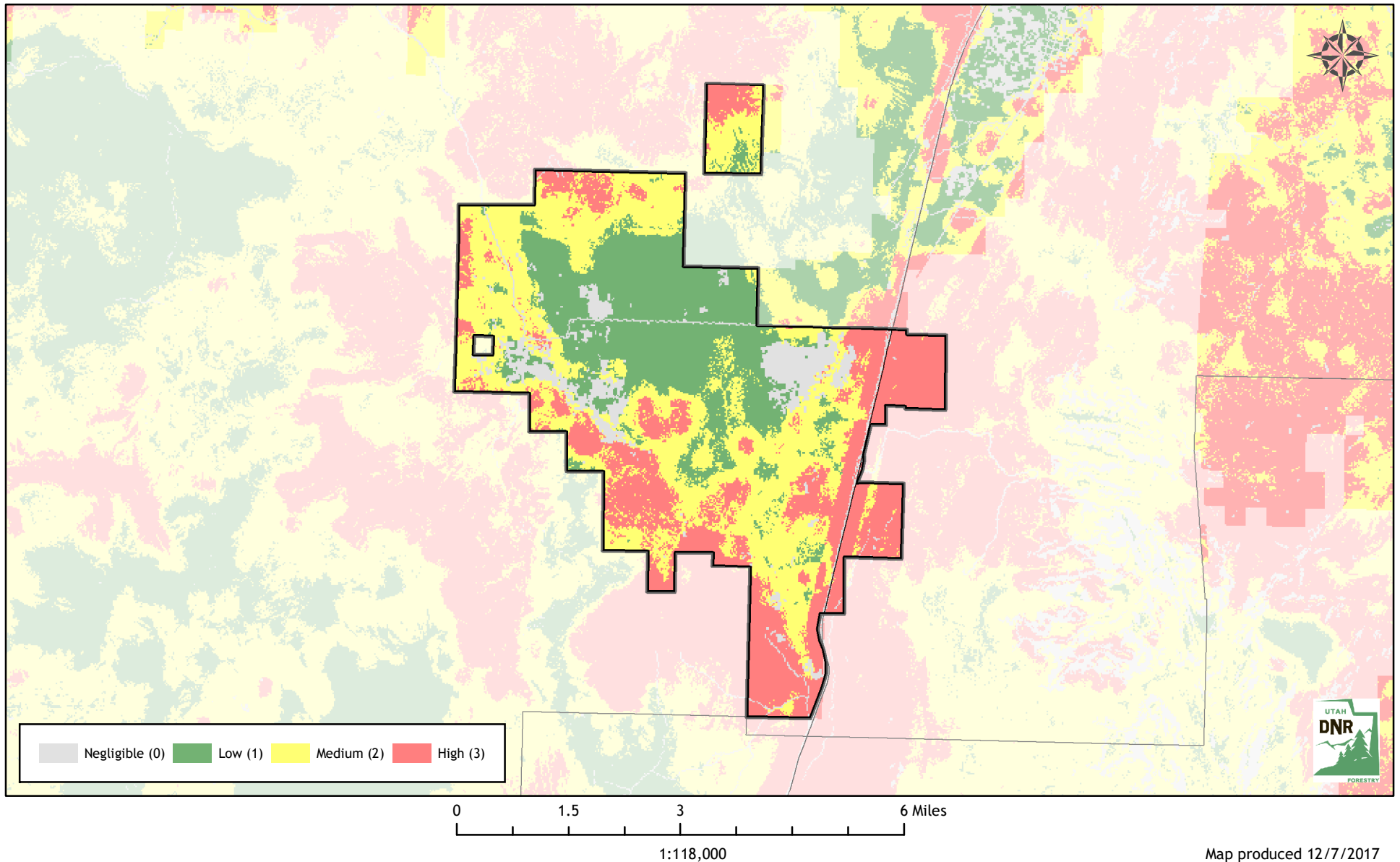


Utah Wildfire Risk Assessment

New Harmony Service District

Derived from www.UtahWildfireRisk.utah.gov

Municipal and Unincorporated Rates
Medium: \$0.30/acre, High: \$0.40/acre
Medium: \$2.00/acre, High: \$3.50/acre
Low Risk: 5,352 Acres (33%)
Medium Risk: 6,064 Acres (38%) - \$2,270
High Risk: 4,604 Acres (29%) - \$1,919
Risk Assessment Total: \$4,190

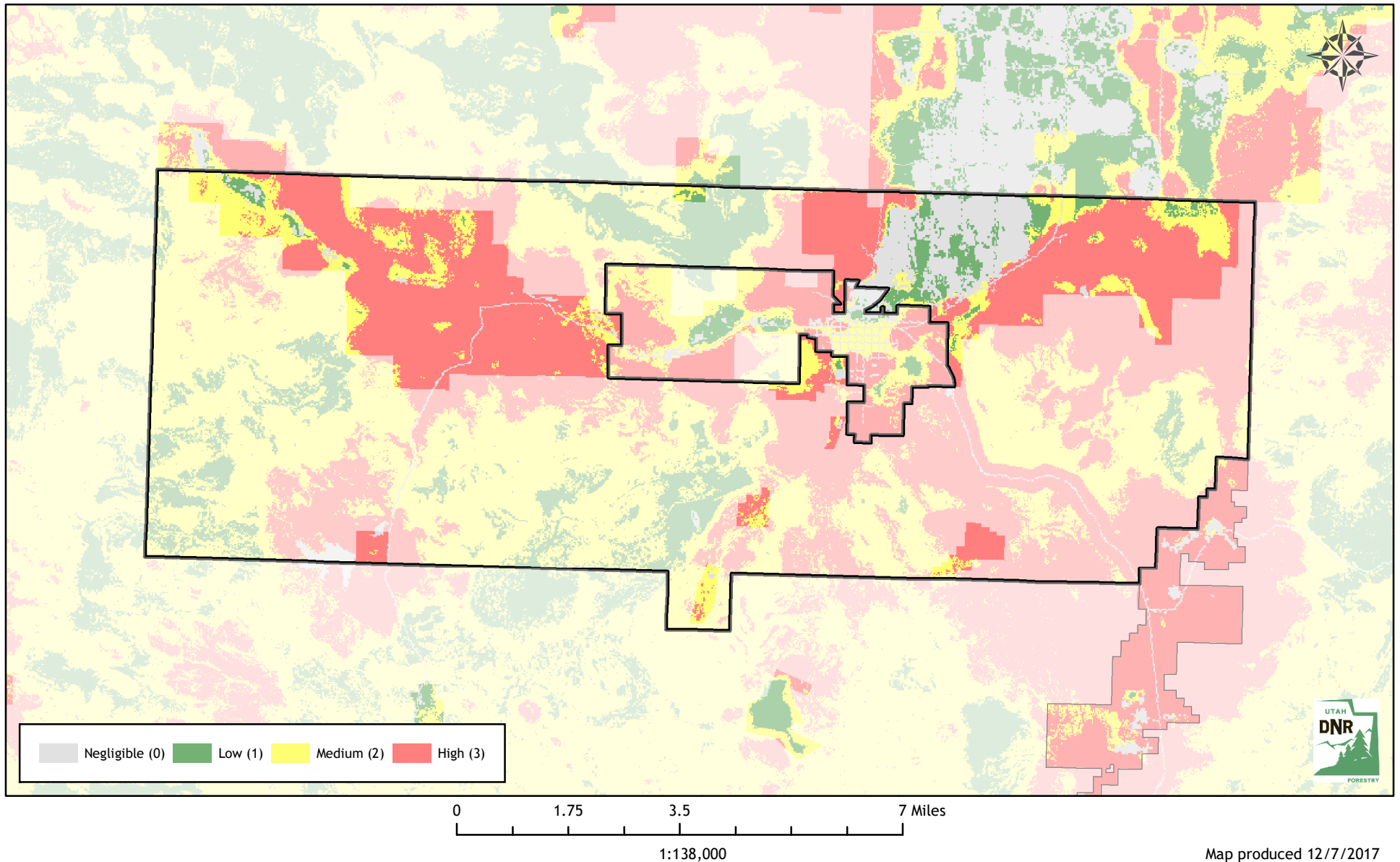


Utah Wildfire Risk Assessment

North Central Service District

Derived from www.UtahWildfireRisk.utah.gov

Municipal and Unincorporated Rates
Medium: \$0.30/acre, High: \$0.40/acre
Medium: \$2.00/acre, High: \$3.50/acre
Low Risk: 2,868 Acres (18%)
Medium Risk: 3,029 Acres (19%) - \$914
High Risk: 10,219 Acres (63%) - \$4,093
Risk Assessment Total: \$5,007

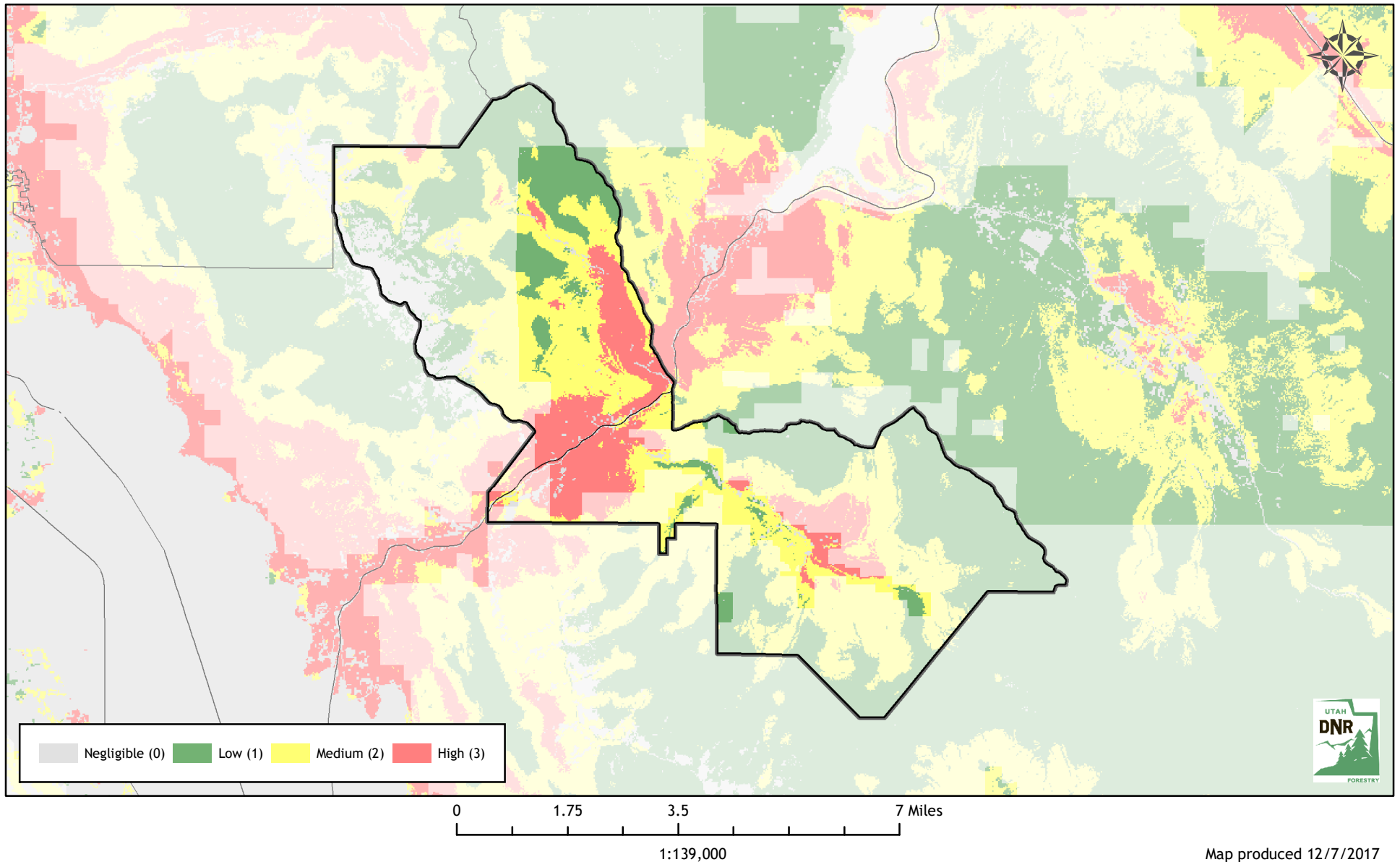


Utah Wildfire Risk Assessment

North Fork Service District

Derived from www.UtahWildfireRisk.utah.gov

Municipal and Unincorporated Rates
Medium: \$0.30/acre, High: \$0.40/acre
Medium: \$2.00/acre, High: \$3.50/acre
Low Risk: 1,875 Acres (23%)
Medium Risk: 3,733 Acres (46%) - \$1,120
High Risk: 2,543 Acres (31%) - \$1,017
Risk Assessment Total: \$2,137

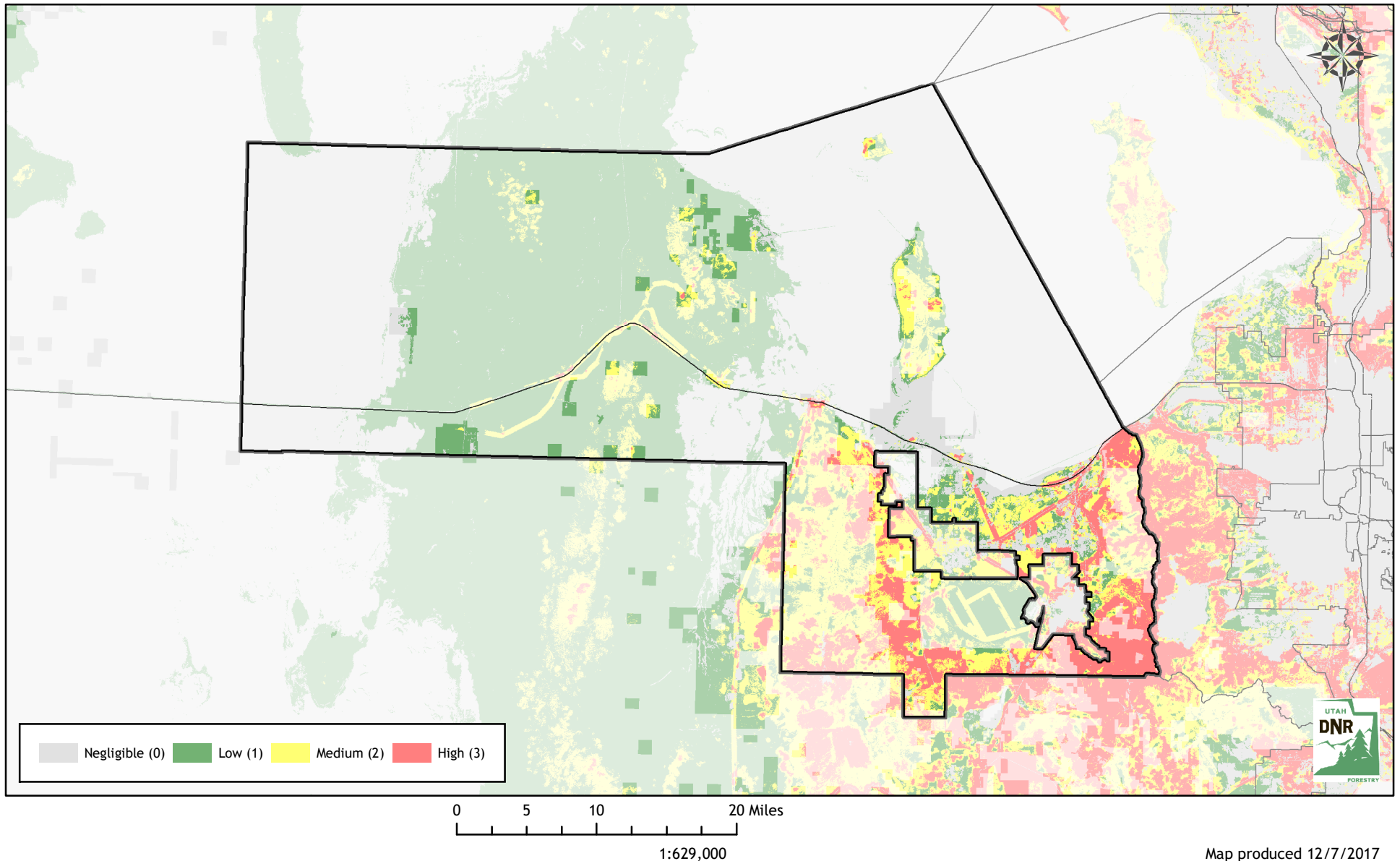


Utah Wildfire Risk Assessment

North Tooele County Service District

Derived from www.UtahWildfireRisk.utah.gov

Municipal and Unincorporated Rates
Medium: \$0.30/acre, High: \$0.40/acre
Medium: \$2.00/acre, High: \$3.50/acre
Low Risk: 67,351 Acres (42%)
Medium Risk: 48,951 Acres (30%) - \$14,685
High Risk: 45,974 Acres (28%) - \$18,390
Risk Assessment Total: \$33,075

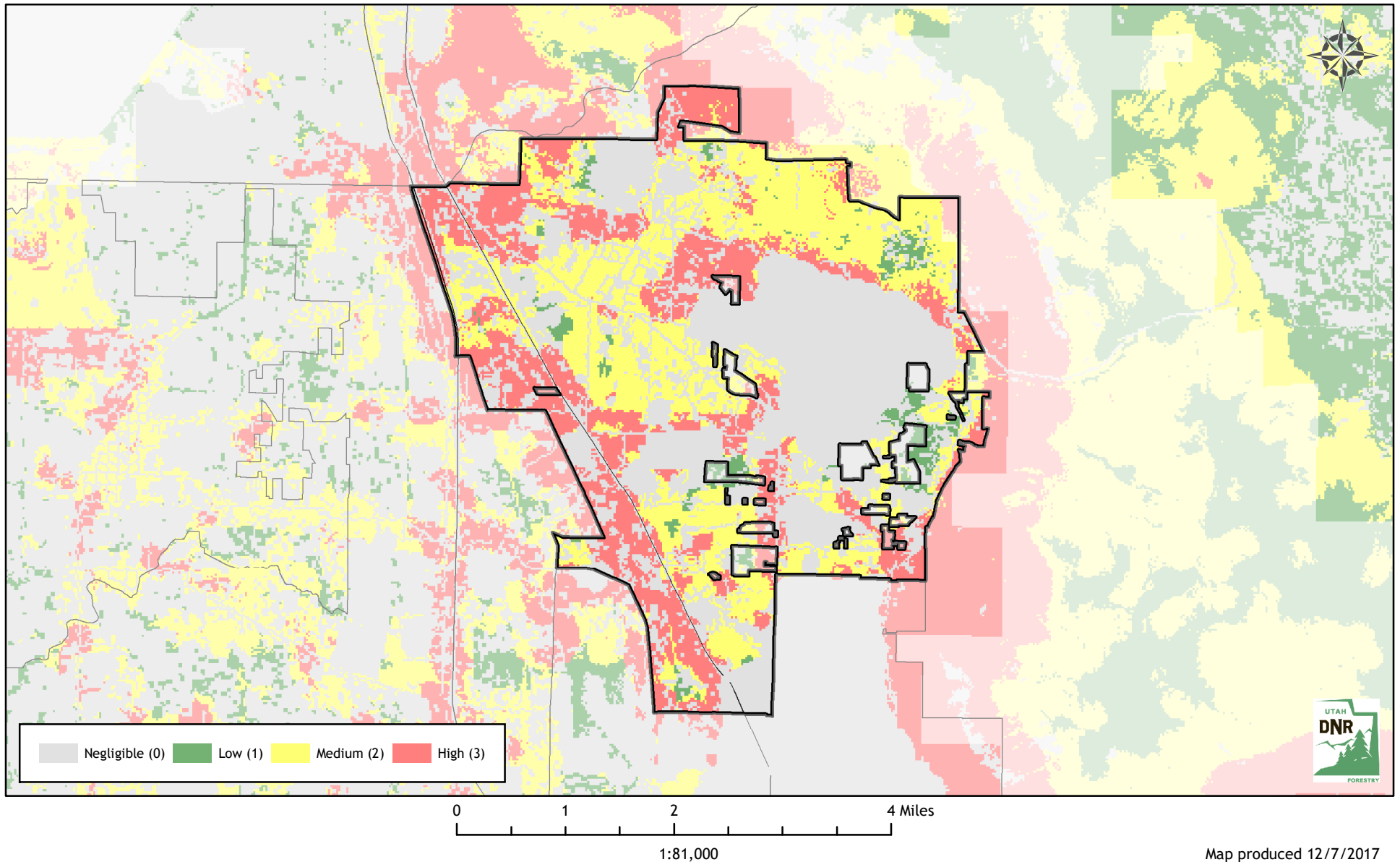


Utah Wildfire Risk Assessment

North View Service District

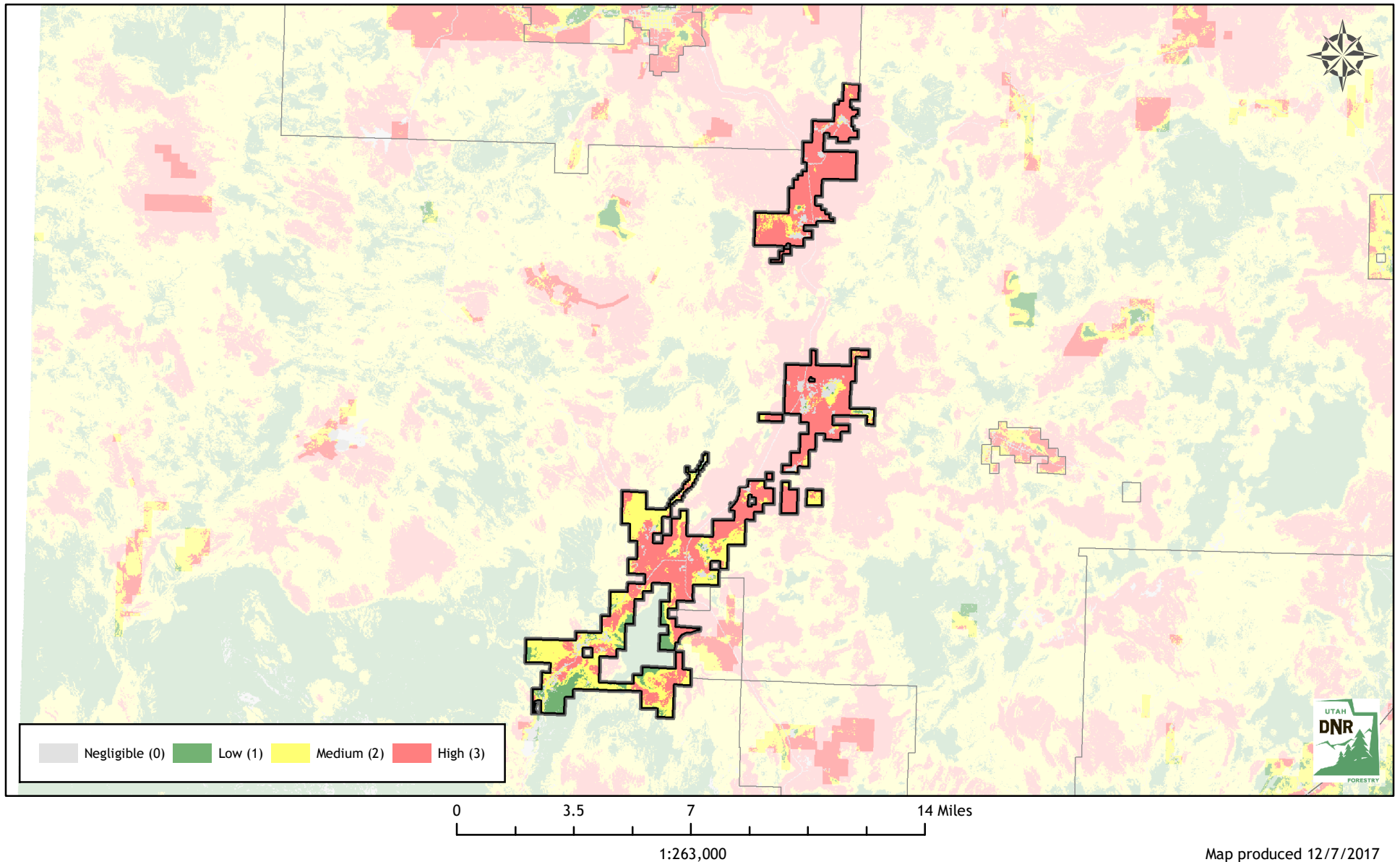
Derived from www.UtahWildfireRisk.utah.gov

Municipal and Unincorporated Rates
Medium: \$0.30/acre, High: \$0.40/acre
Medium: \$2.00/acre, High: \$3.50/acre
Low Risk: 5,432 Acres (49%)
Medium Risk: 3,171 Acres (29%) - \$6,342
High Risk: 2,430 Acres (22%) - \$8,505
Risk Assessment Total: \$14,847



Utah Wildfire Risk Assessment *Northwestern Service District* Derived from www.UtahWildfireRisk.utah.gov

Municipal and Unincorporated Rates
Medium: \$0.30/acre, High: \$0.40/acre
Medium: \$2.00/acre, High: \$3.50/acre
Low Risk: 2,361 Acres (13%)
Medium Risk: 5,167 Acres (29%) - \$1,550
High Risk: 10,367 Acres (58%) - \$4,147
Risk Assessment Total: \$5,697

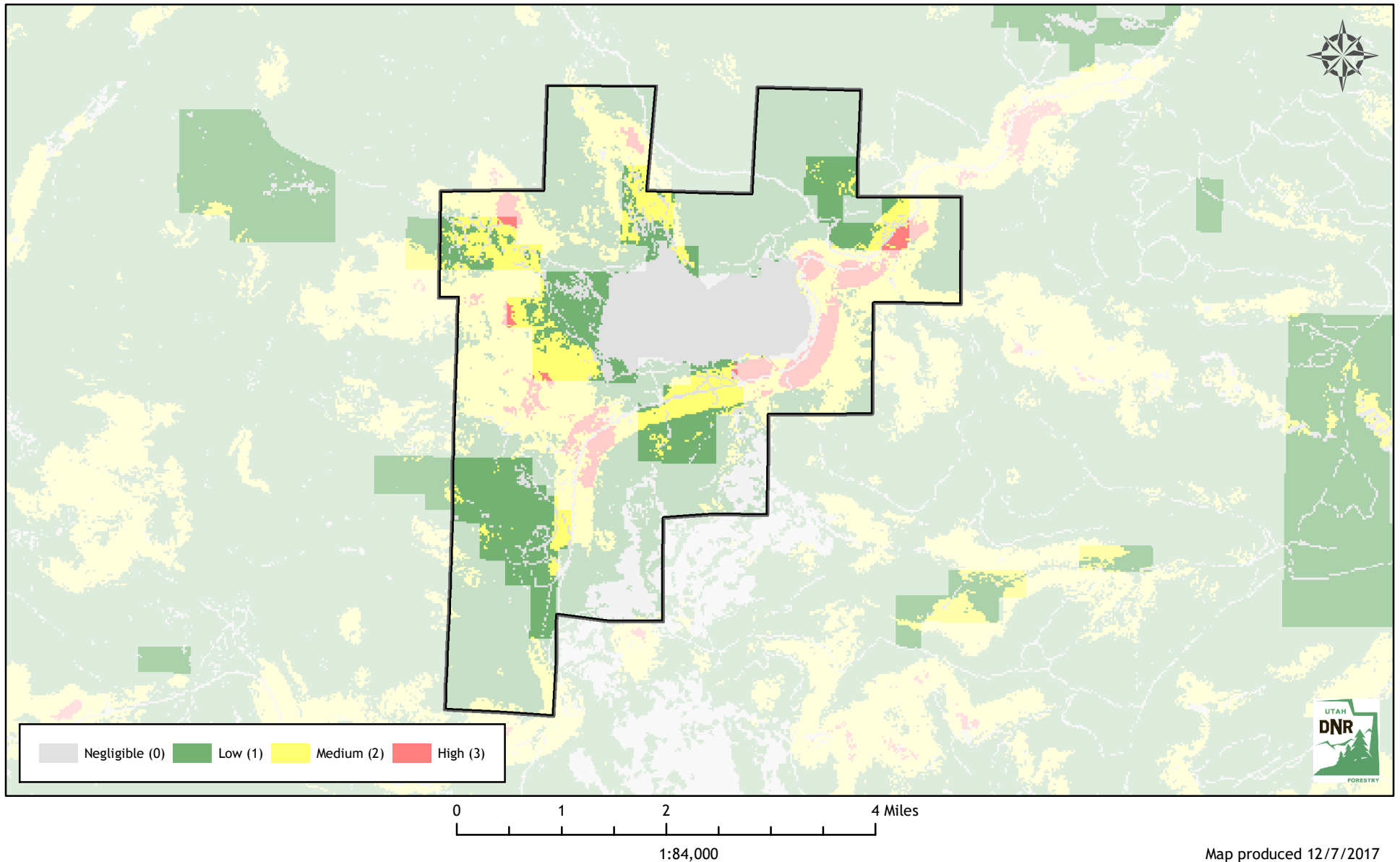


Utah Wildfire Risk Assessment

Panguitch Lake Area Service District

Derived from www.UtahWildfireRisk.utah.gov

Municipal and Unincorporated Rates
Medium: \$0.30/acre, High: \$0.40/acre
Medium: \$2.00/acre, High: \$3.50/acre
Low Risk: 2,791 Acres (78%)
Medium Risk: 745 Acres (21%) - \$224
High Risk: 46 Acres (1%) - \$18
Risk Assessment Total: \$242

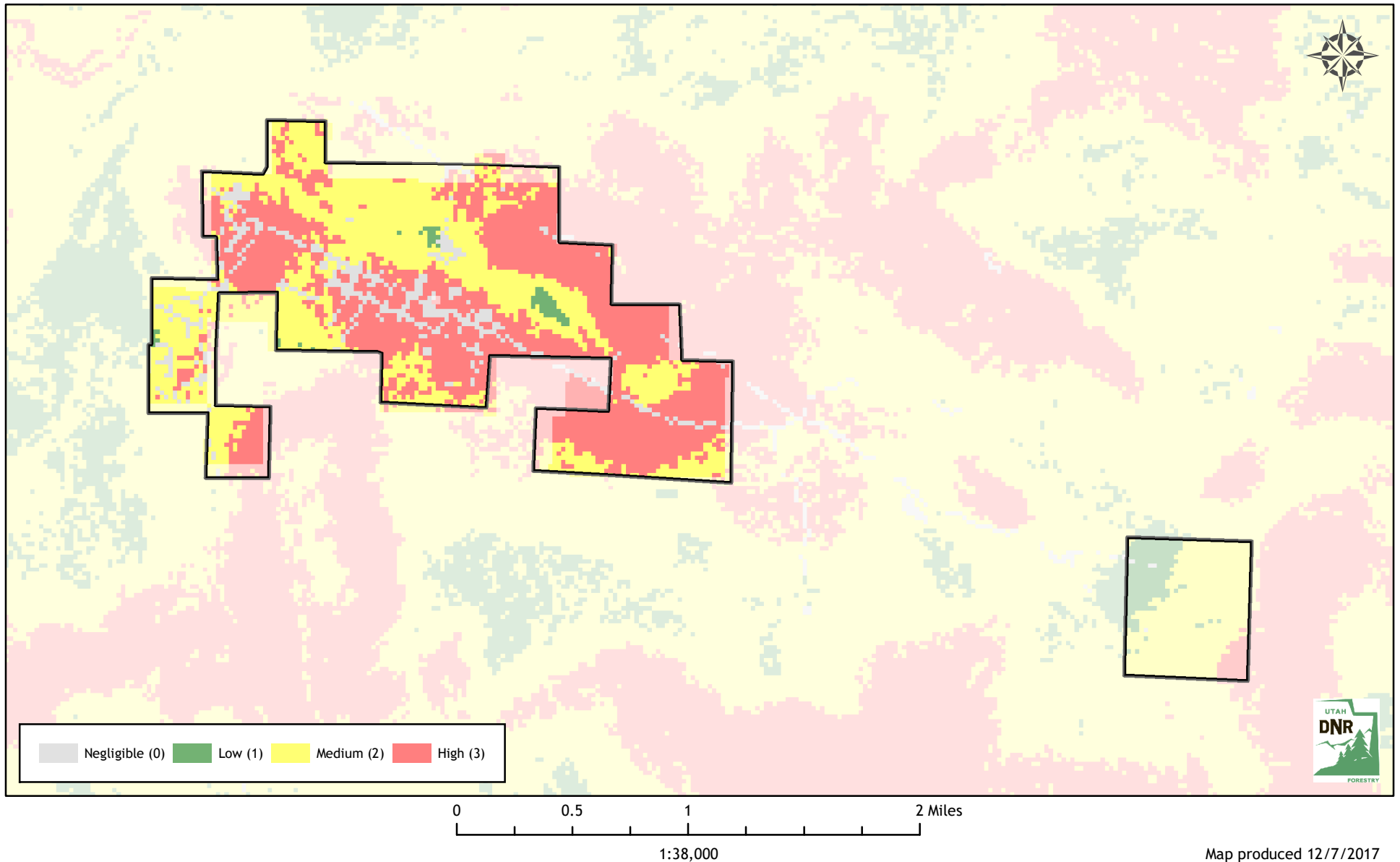


Utah Wildfire Risk Assessment

Pine Valley Service District

Derived from www.UtahWildfireRisk.utah.gov

Municipal and Unincorporated Rates
Medium: \$0.30/acre, High: \$0.40/acre
Medium: \$2.00/acre, High: \$3.50/acre
Low Risk: 119 Acres (10%)
Medium Risk: 477 Acres (39%) - \$143
High Risk: 615 Acres (51%) - \$246
Risk Assessment Total: \$389

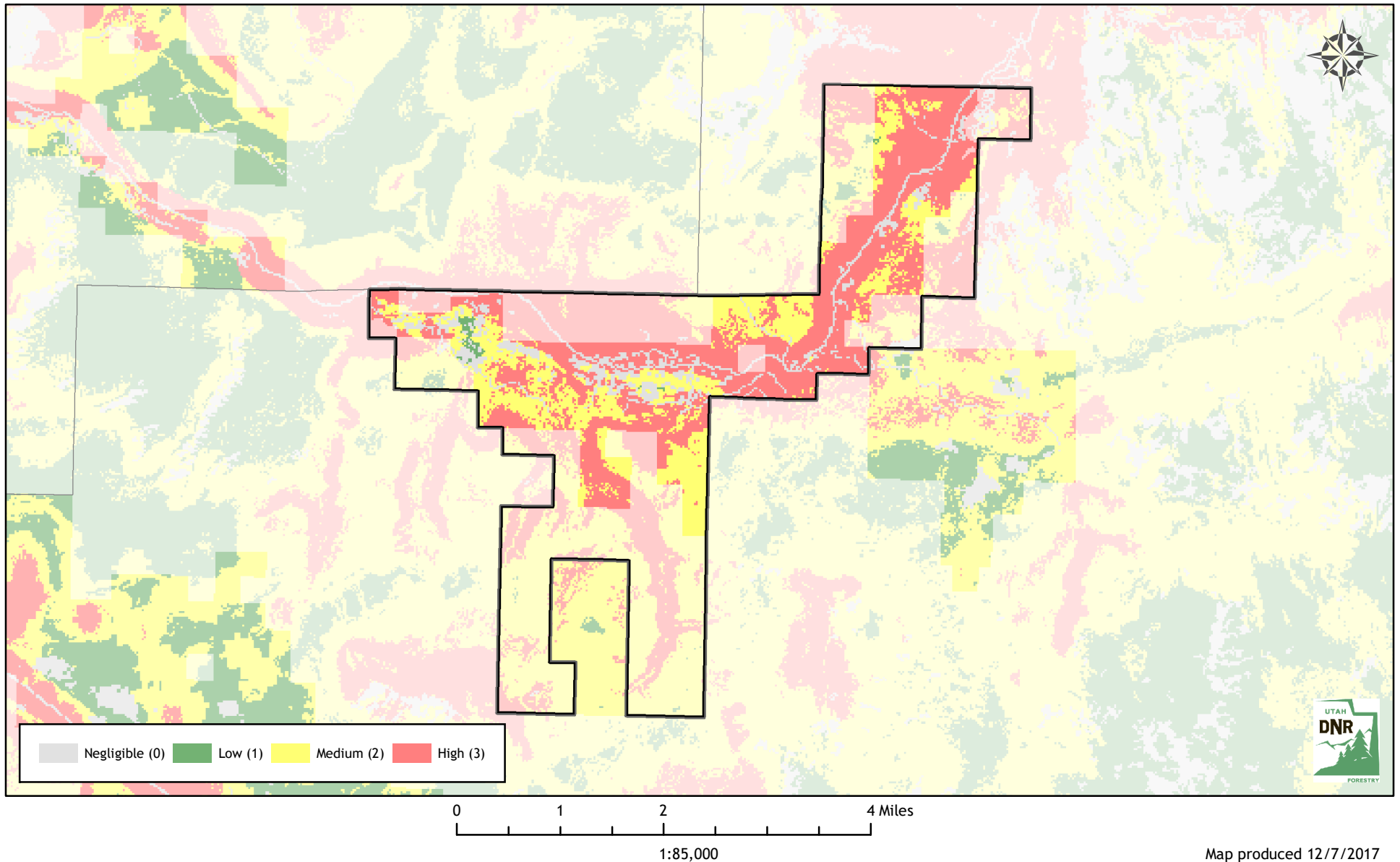


Utah Wildfire Risk Assessment

Rockville/Springdale Service District

Derived from www.UtahWildfireRisk.utah.gov

Municipal and Unincorporated Rates
Medium: \$0.30/acre, High: \$0.40/acre
Medium: \$2.00/acre, High: \$3.50/acre
Low Risk: 485 Acres (12%)
Medium Risk: 1,291 Acres (32%) - \$2,579
High Risk: 2,215 Acres (55%) - \$7,739
Risk Assessment Total: \$10,317

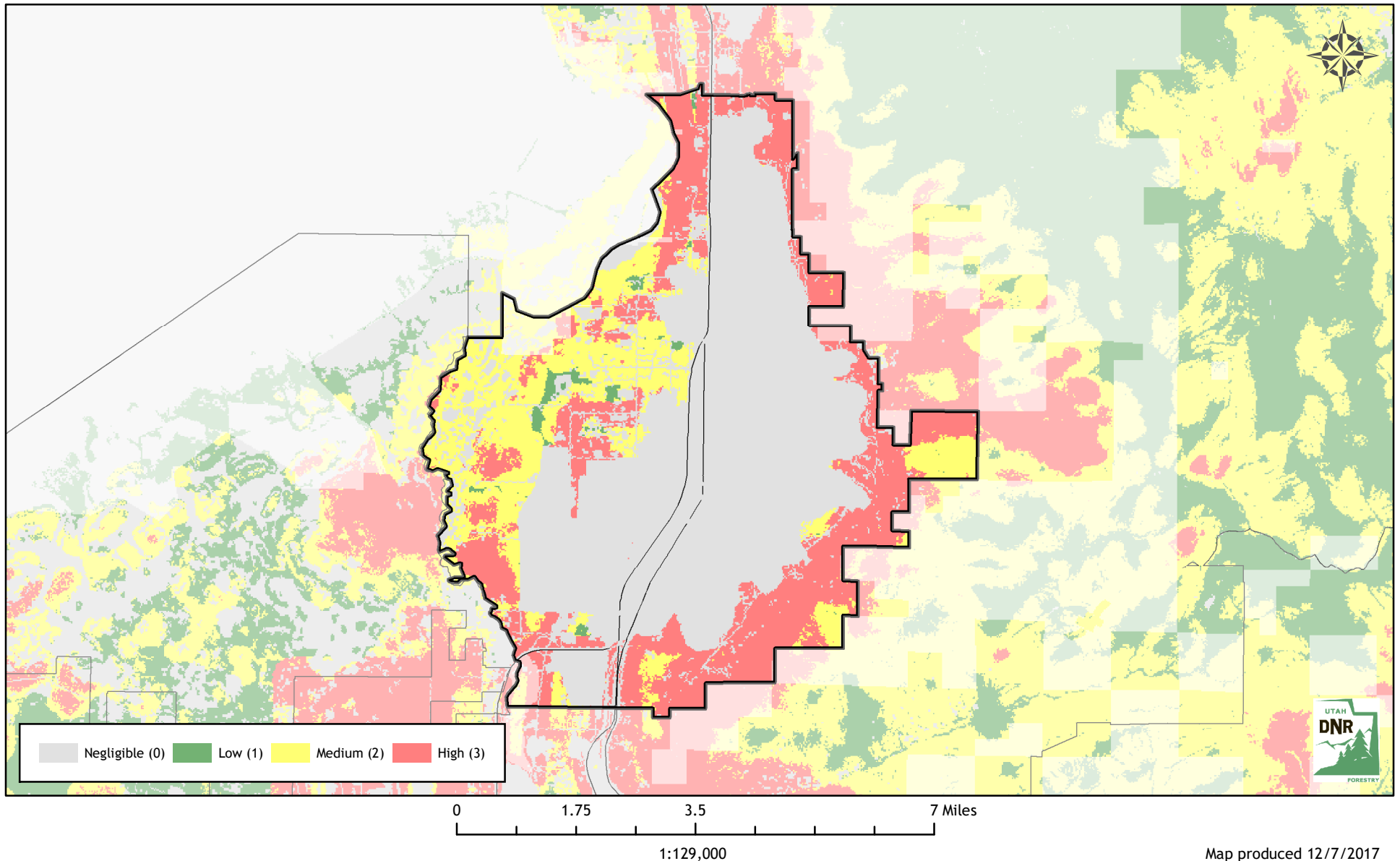


Utah Wildfire Risk Assessment

South Davis Metro Fire Service District

Derived from www.UtahWildfireRisk.utah.gov

Municipal and Unincorporated Rates
Medium: \$0.30/acre, High: \$0.40/acre
Medium: \$2.00/acre, High: \$3.50/acre
Low Risk: 15,204 Acres (59%)
Medium Risk: 4,279 Acres (16%) - \$5,227
High Risk: 6,461 Acres (25%) - \$20,522
Risk Assessment Total: \$25,749

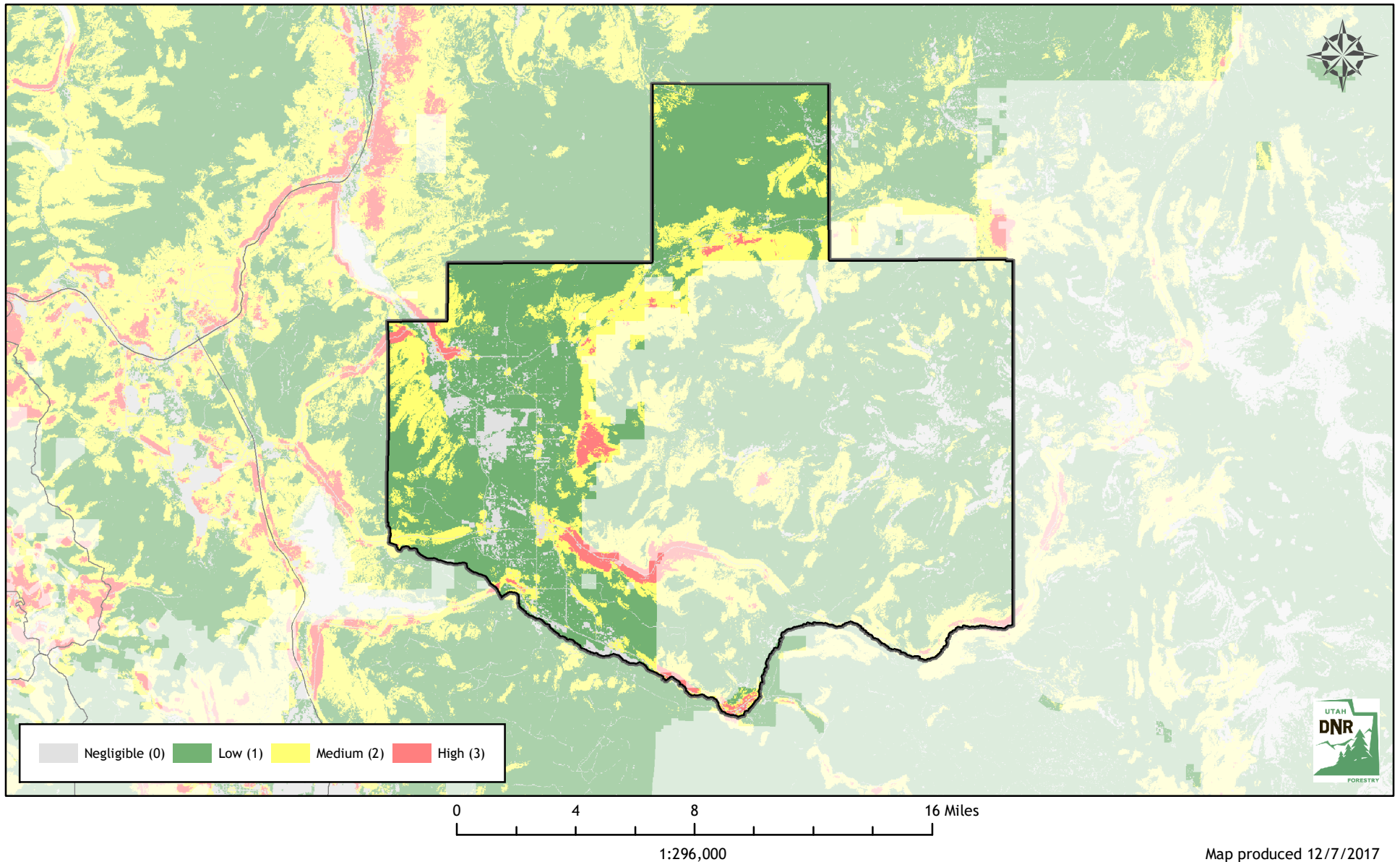


Utah Wildfire Risk Assessment

South Summit Service District

Derived from www.UtahWildfireRisk.utah.gov

Municipal and Unincorporated Rates
Medium: \$0.30/acre, High: \$0.40/acre
Medium: \$2.00/acre, High: \$3.50/acre
Low Risk: 57,593 Acres (73%)
Medium Risk: 18,846 Acres (24%) - \$8,438
High Risk: 2,626 Acres (3%) - \$1,521
Risk Assessment Total: \$9,959

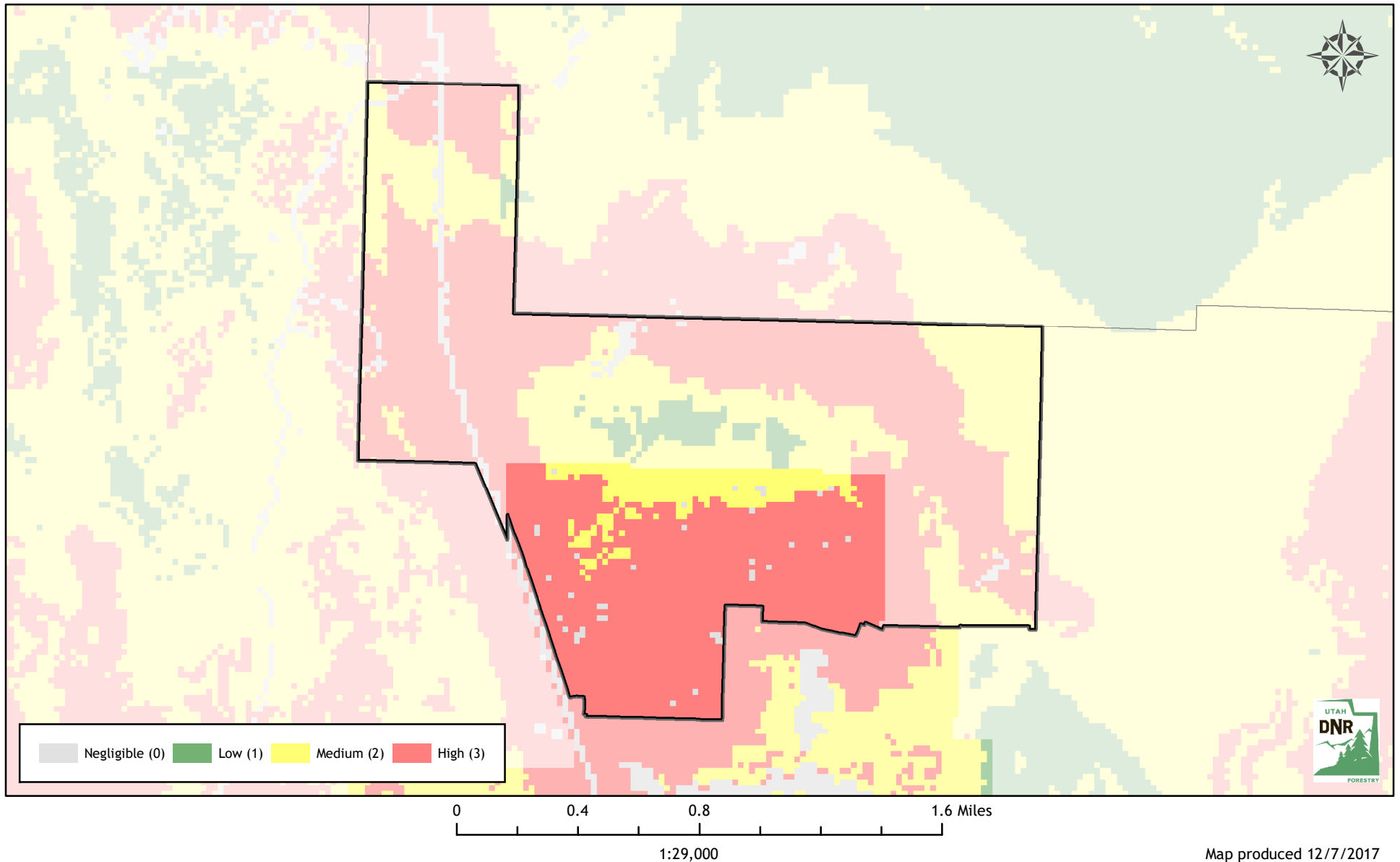


Utah Wildfire Risk Assessment

Southwestern Service District

Derived from www.UtahWildfireRisk.utah.gov

Municipal and Unincorporated Rates
Medium: \$0.30/acre, High: \$0.40/acre
Medium: \$2.00/acre, High: \$3.50/acre
Low Risk: 9 Acres (2%)
Medium Risk: 74 Acres (15%) - \$22
High Risk: 415 Acres (83%) - \$166
Risk Assessment Total: \$188

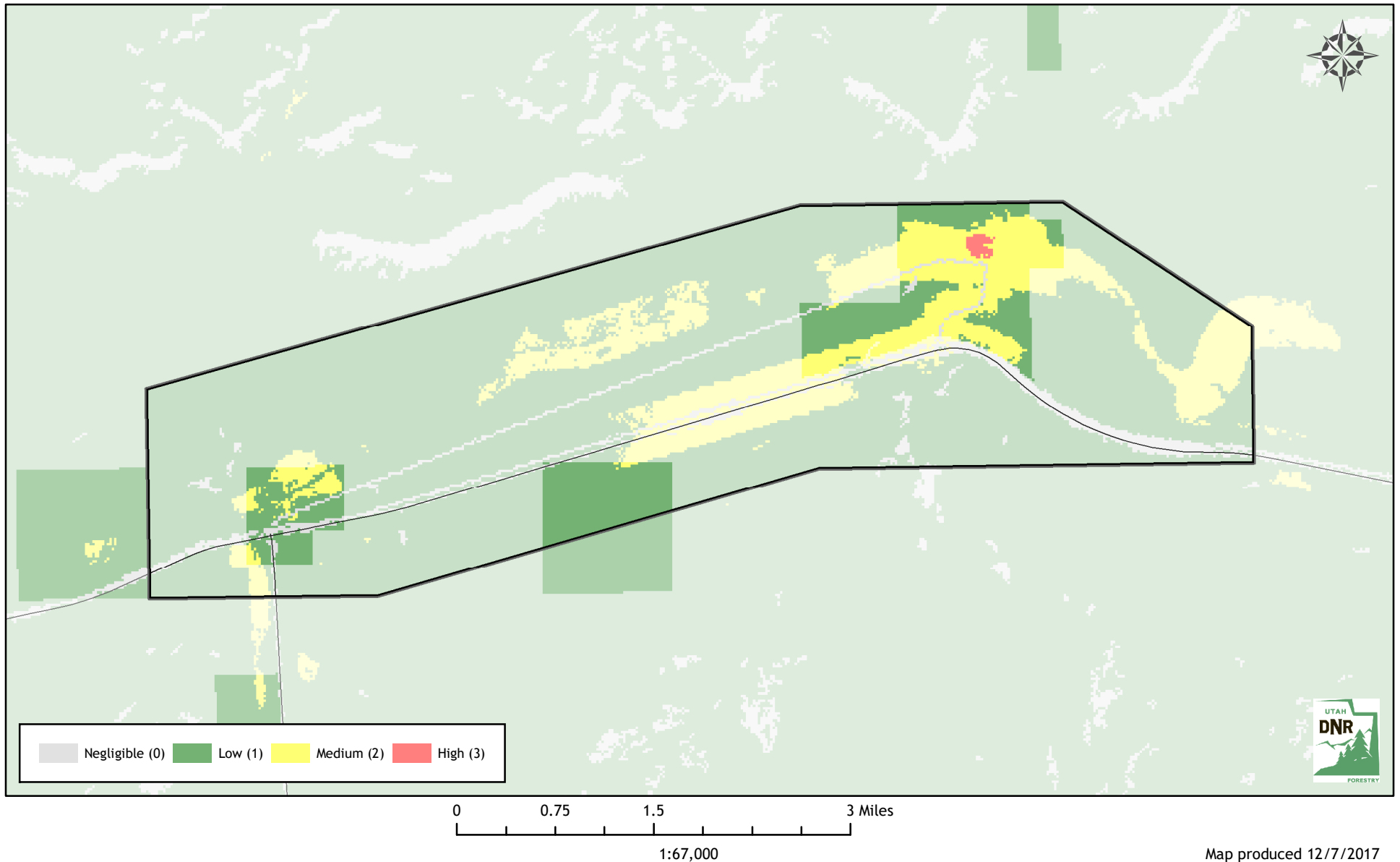


Utah Wildfire Risk Assessment

Thompson Springs Service District

Derived from www.UtahWildfireRisk.utah.gov

Municipal and Unincorporated Rates
Medium: \$0.30/acre, High: \$0.40/acre
Medium: \$2.00/acre, High: \$3.50/acre
Low Risk: 996 Acres (61%)
Medium Risk: 626 Acres (38%) - \$188
High Risk: 19 Acres (1%) - \$8
Risk Assessment Total: \$195

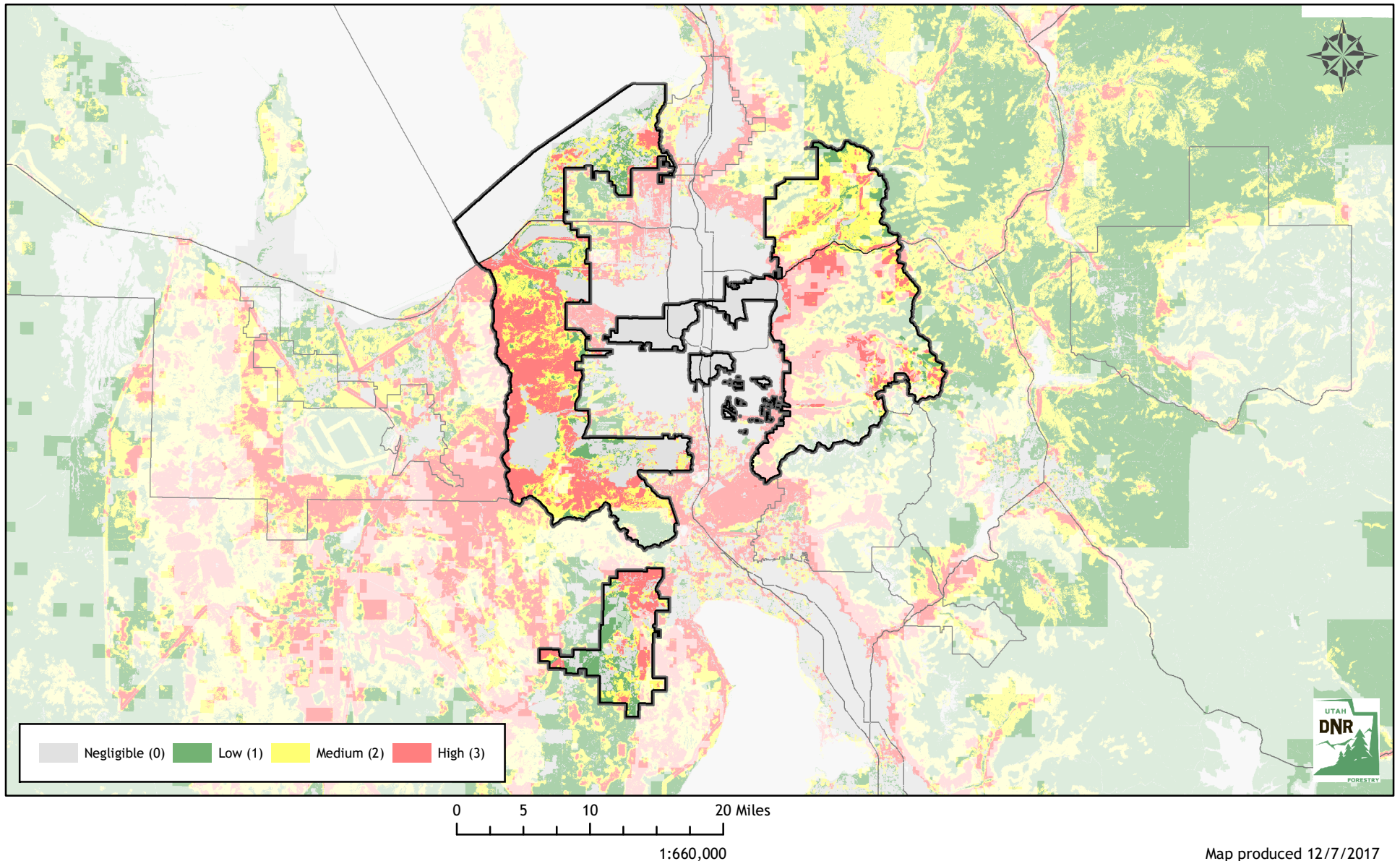


Utah Wildfire Risk Assessment

Unified Fire Service District

Derived from www.UtahWildfireRisk.utah.gov

Municipal and Unincorporated Rates
Medium: \$0.30/acre, High: \$0.40/acre
Medium: \$2.00/acre, High: \$3.50/acre
Low Risk: 94,044 Acres (43%)
Medium Risk: 58,179 Acres (26%) - \$35,188
High Risk: 68,234 Acres (31%) - \$68,030
Risk Assessment Total: \$103,218



Utah Wildfire Risk Assessment *Weber Fire District*

Derived from www.UtahWildfireRisk.utah.gov

Municipal and Unincorporated Rates
Medium: \$0.30/acre, High: \$0.40/acre
Medium: \$2.00/acre, High: \$3.50/acre
Low Risk: 156,553 Acres (73%)
Medium Risk: 43,425 Acres (20%) - \$25,278
High Risk: 15,858 Acres (7%) - \$19,706
Risk Assessment Total: \$44,984

