

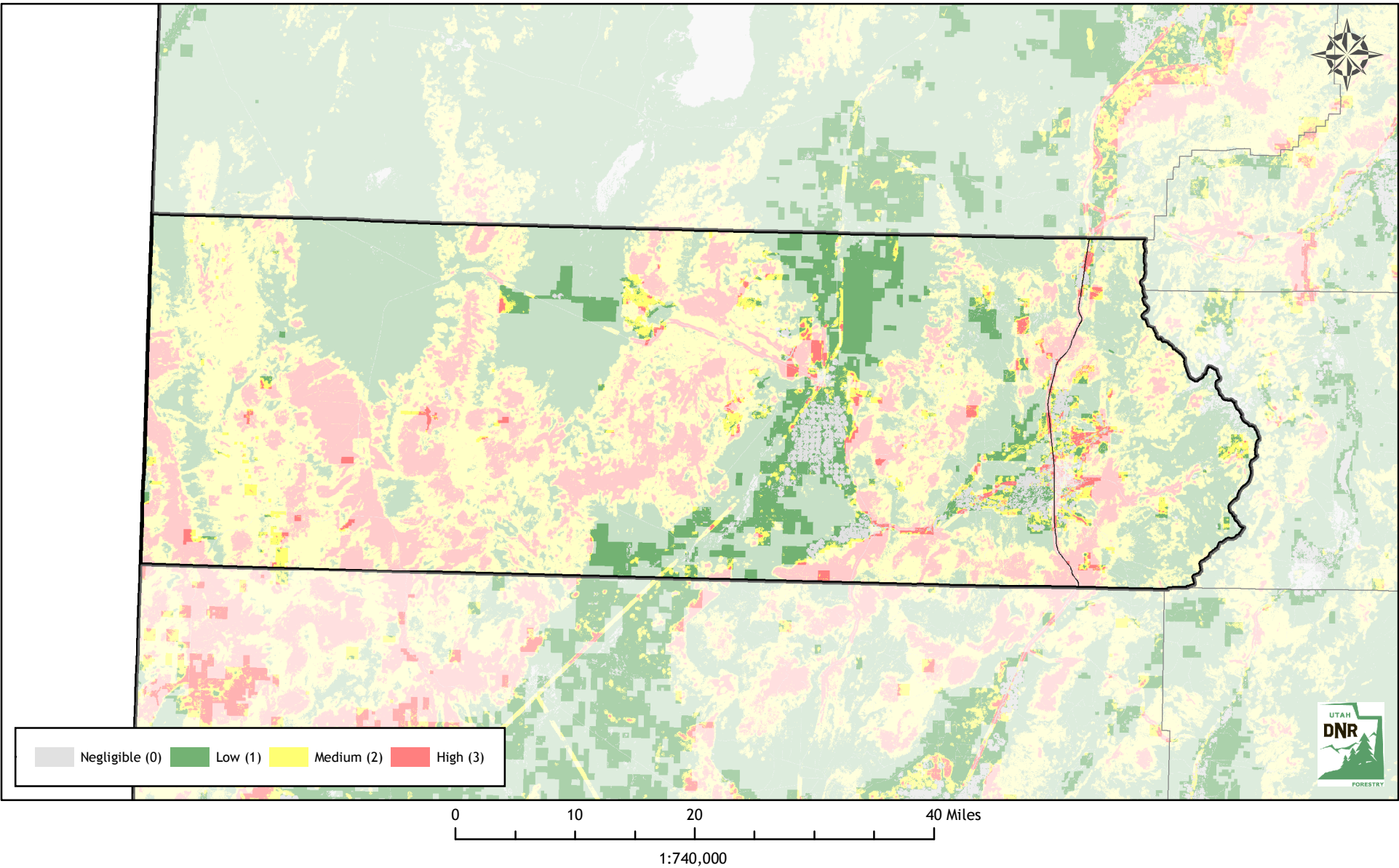
Utah Wildfire Risk Assessment

BEAVER COUNTY

Derived from www.UtahWildfireRisk.com

Medium: \$0.30/acre, High: \$0.40/acre
Low Risk: 141,755 Acres (70%)
Medium Risk: 43,493 Acres (21%) - \$13,048
High Risk: 17,278 Acres (9%) - \$6,911

Risk Assessment Total: \$19,959
Participation Commitment Total: \$43,509



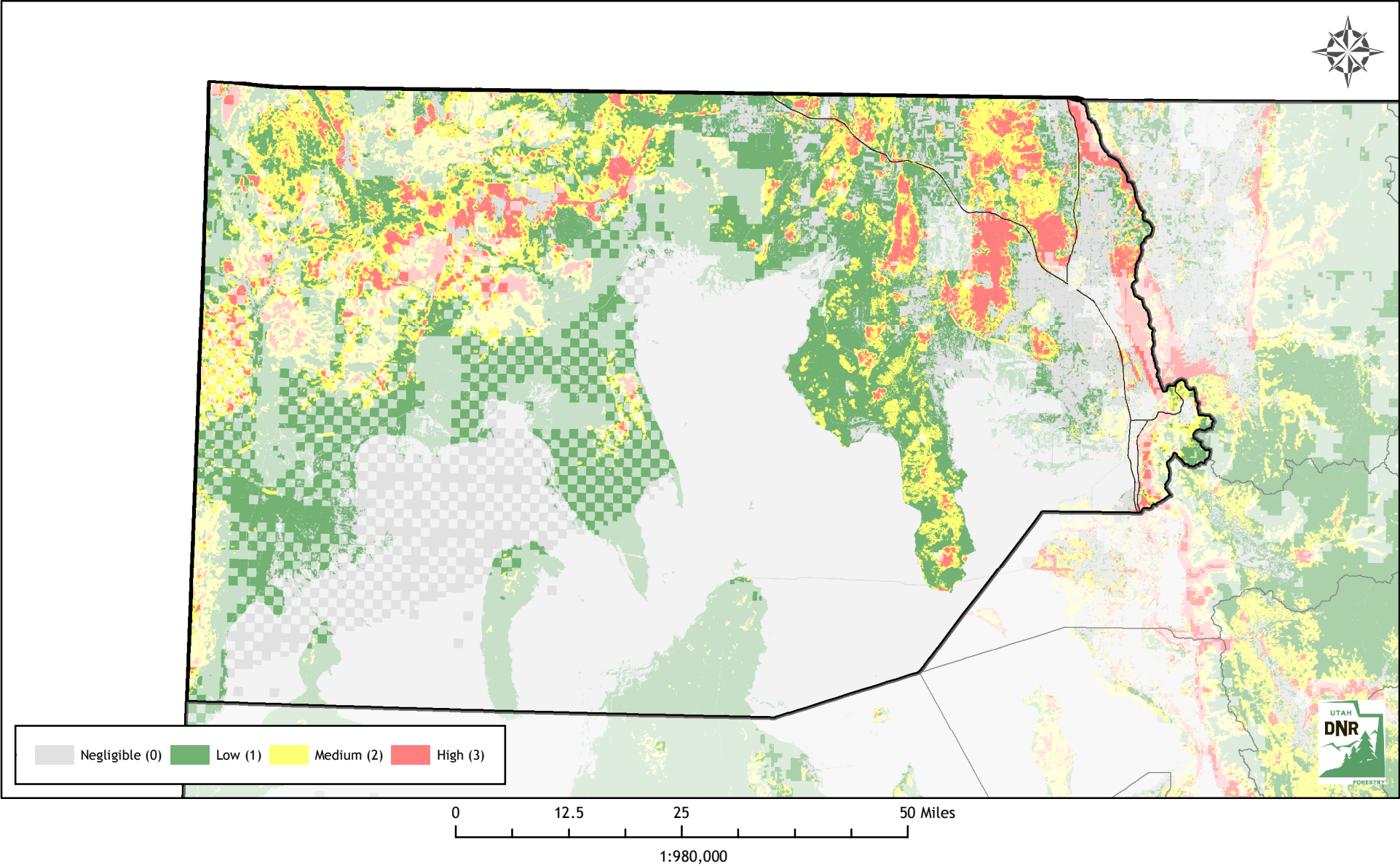
Utah Wildfire Risk Assessment

BOX ELDER COUNTY

Derived from www.UtahWildfireRisk.com

Medium: \$0.30/acre, High: \$0.40/acre
Low Risk: 1,198,094 Acres (66%)
Medium Risk: 447,128 Acres (25%) - \$134,139
High Risk: 175,972 Acres (10%) - \$70,389

Risk Assessment Total: \$204,527
Participation Commitment Total: \$708,927



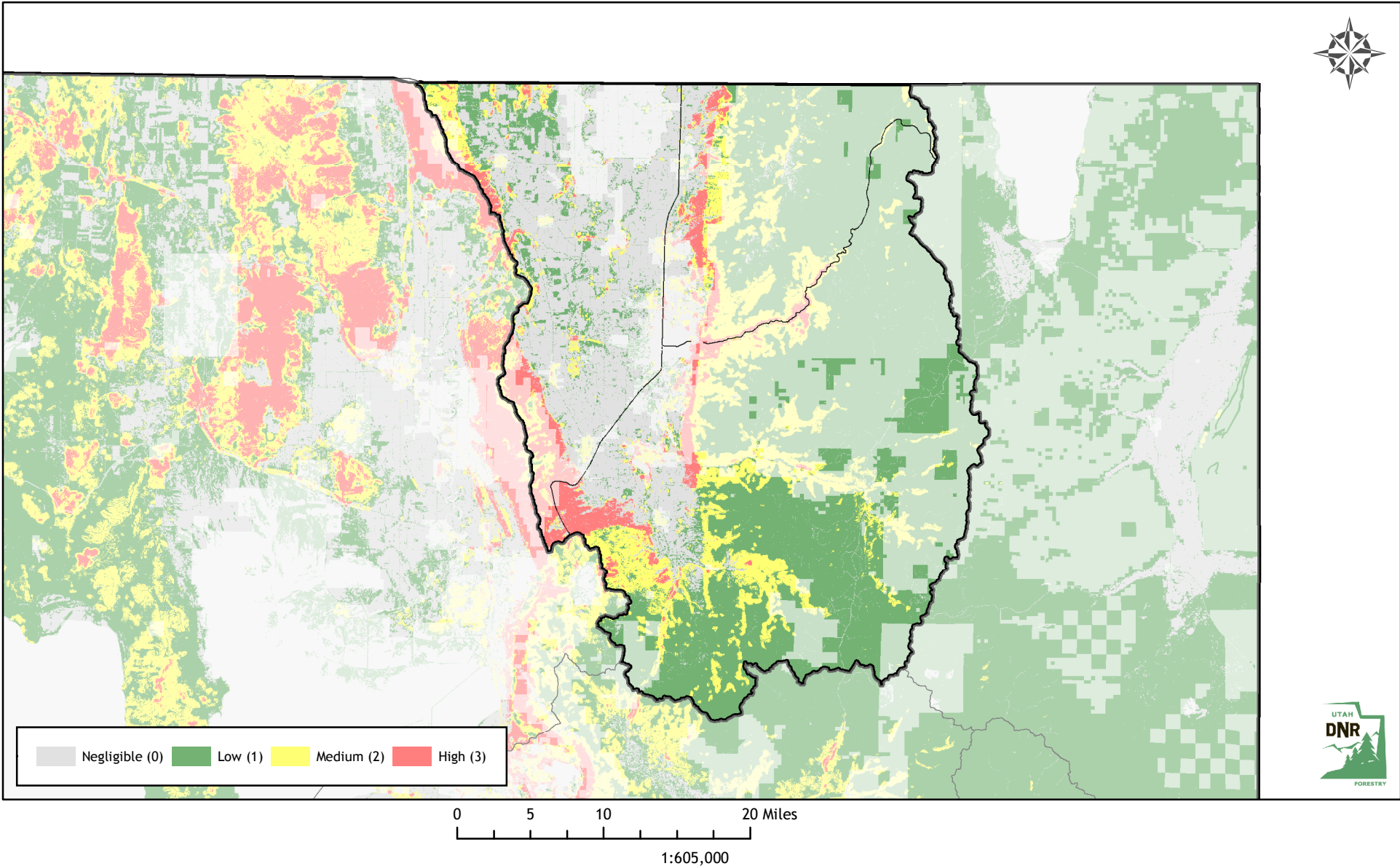
Utah Wildfire Risk Assessment

CACHE COUNTY

Derived from www.UtahWildfireRisk.com

Medium: \$0.30/acre, High: \$0.40/acre
Low Risk: 283,770 Acres (79%)
Medium Risk: 51,520 Acres (14%) - \$15,456
High Risk: 22,032 Acres (6%) - \$8,813

Risk Assessment Total: \$24,269
Participation Commitment Total: \$55,476



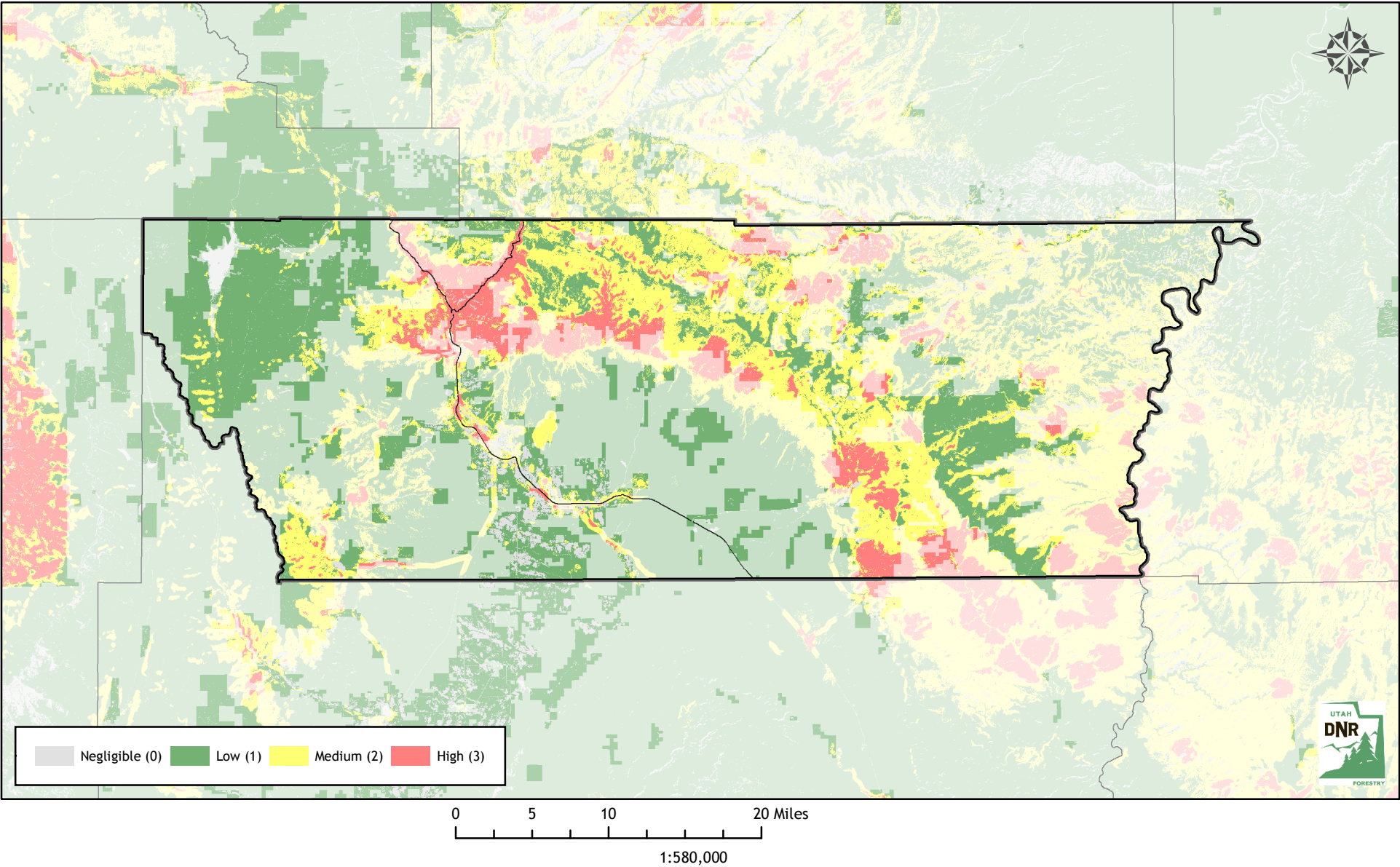
Utah Wildfire Risk Assessment

CARBON COUNTY

Derived from www.UtahWildfireRisk.com

Medium: \$0.30/acre, High: \$0.40/acre
Low Risk: 190,232 Acres (53%)
Medium Risk: 126,525 Acres (35%) - \$37,958
High Risk: 41,015 Acres (11%) - \$16,406

Risk Assessment Total: \$54,364
Participation Commitment Total: \$98,772

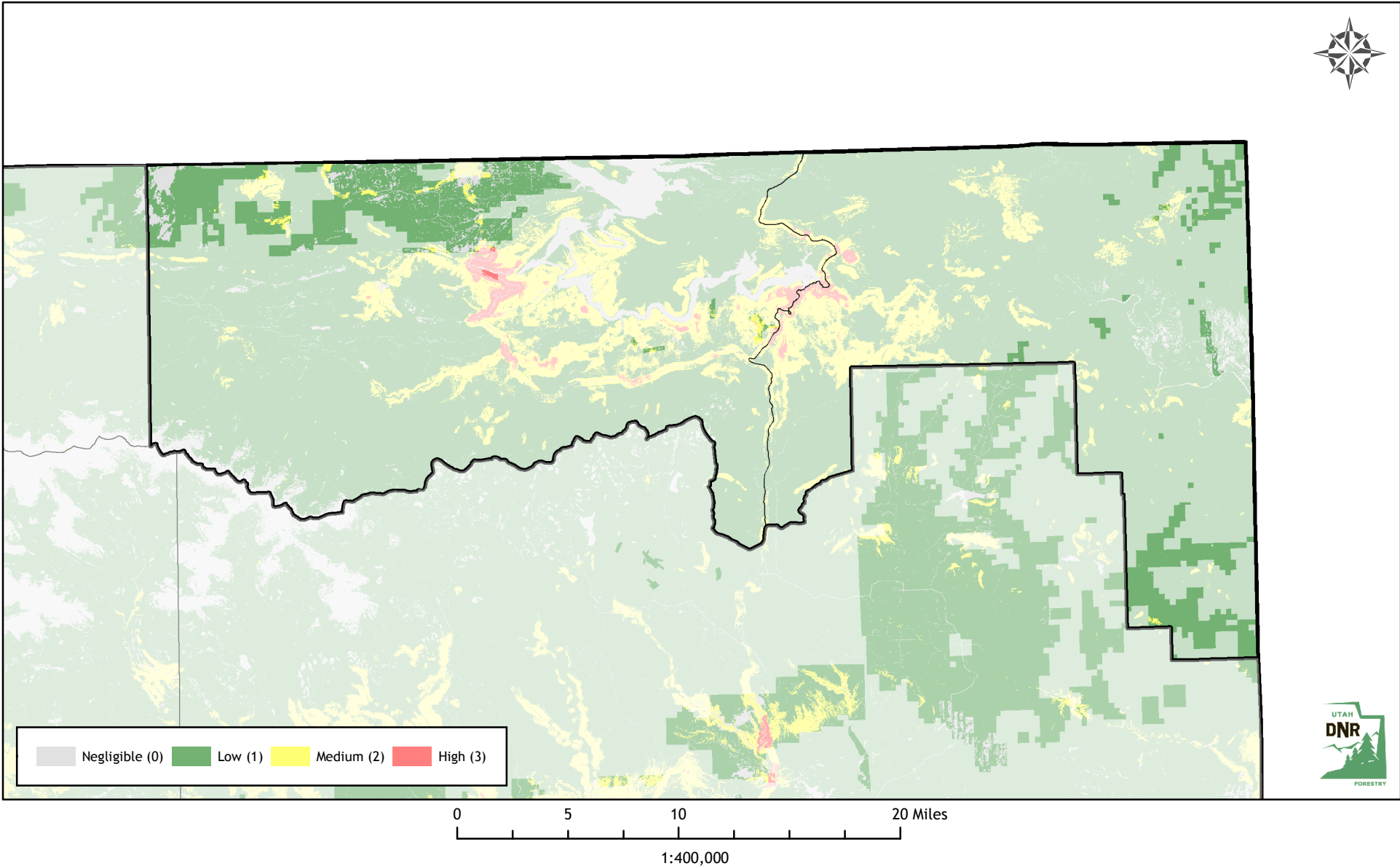


Utah Wildfire Risk Assessment

DAGGETT COUNTY

Derived from www.UtahWildfireRisk.com

Medium: \$0.30/acre, High: \$0.40/acre
Low Risk: 44,484 Acres (97%)
Medium Risk: 1,435 Acres (3%) - \$431
High Risk: 139 Acres (0%) - \$56
Risk Assessment Total: \$486
Participation Commitment Total: \$6,604



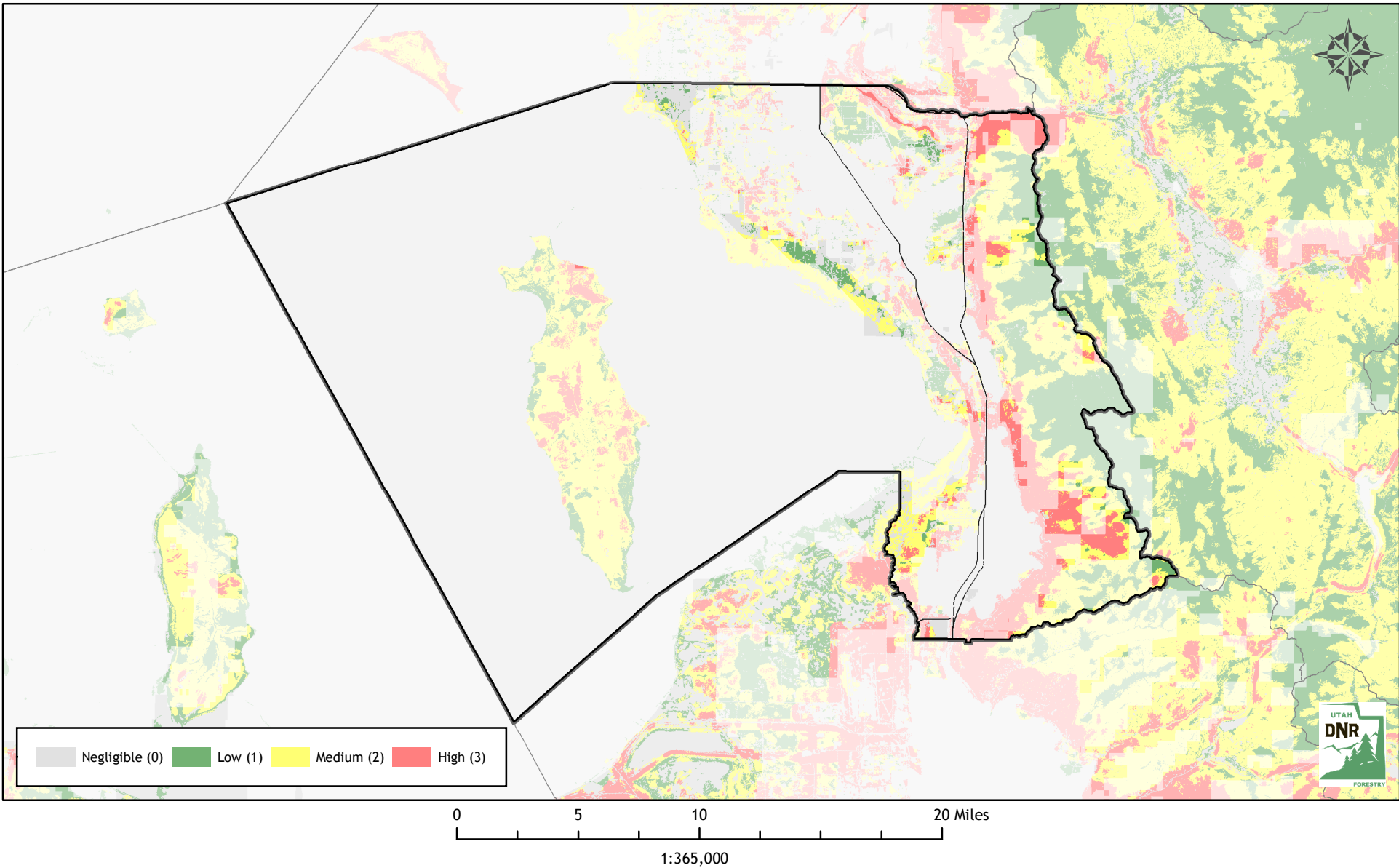
Utah Wildfire Risk Assessment

DAVIS COUNTY

Derived from www.UtahWildfireRisk.com

Medium: \$0.30/acre, High: \$0.40/acre
Low Risk: 9,454 Acres (39%)
Medium Risk: 8,298 Acres (34%) - \$2,489
High Risk: 6,715 Acres (27%) - \$2,686

Risk Assessment Total: \$5,175
Participation Commitment Total: \$27,443



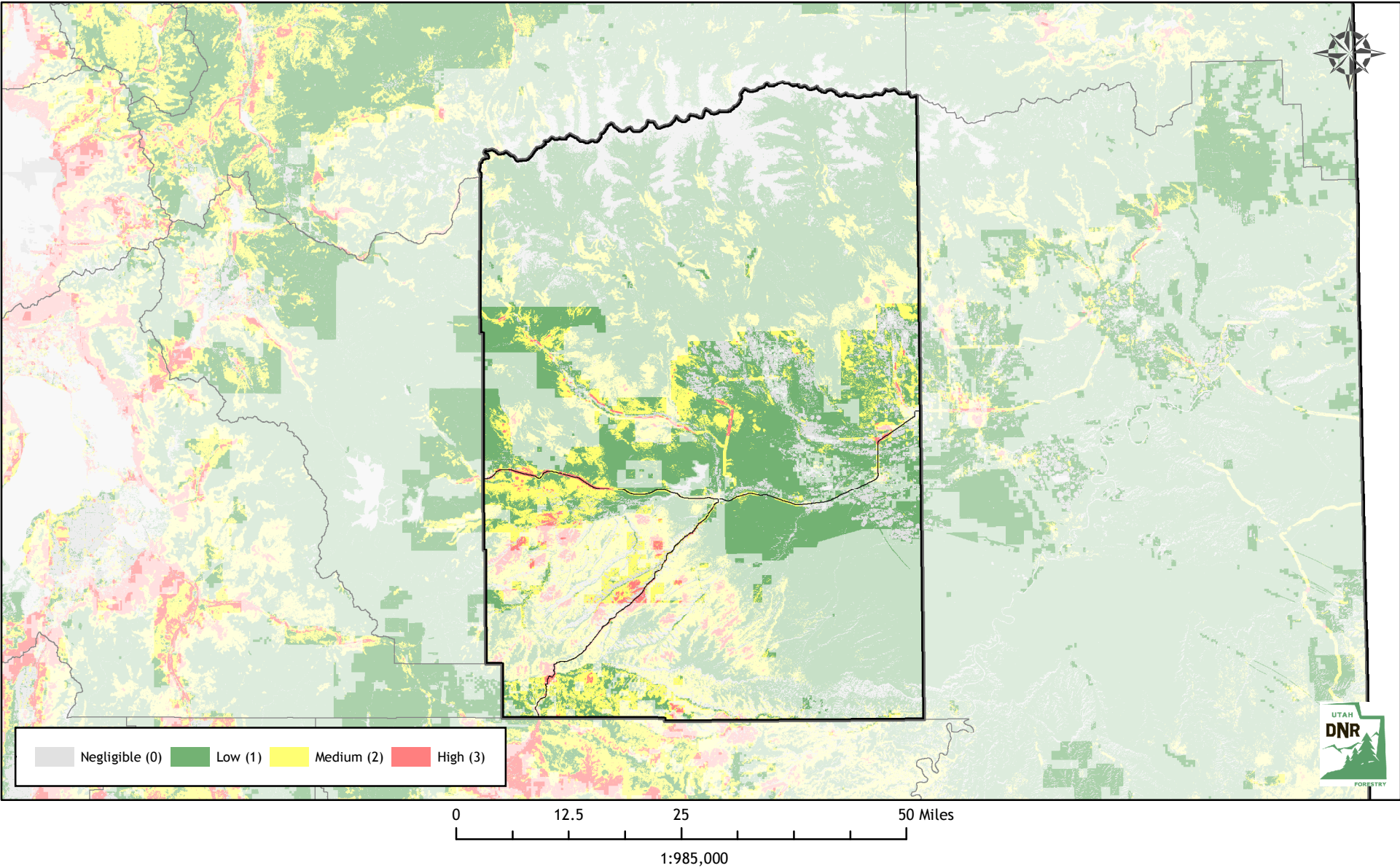
Utah Wildfire Risk Assessment

DUCHESNE COUNTY

Derived from www.UtahWildfireRisk.com

Medium: \$0.30/acre, High: \$0.40/acre
Low Risk: 424,651 Acres (72%)
Medium Risk: 152,761 Acres (26%) - \$45,828
High Risk: 13,622 Acres (2%) - \$5,449

Risk Assessment Total: \$51,277
Participation Commitment Total: \$157,939



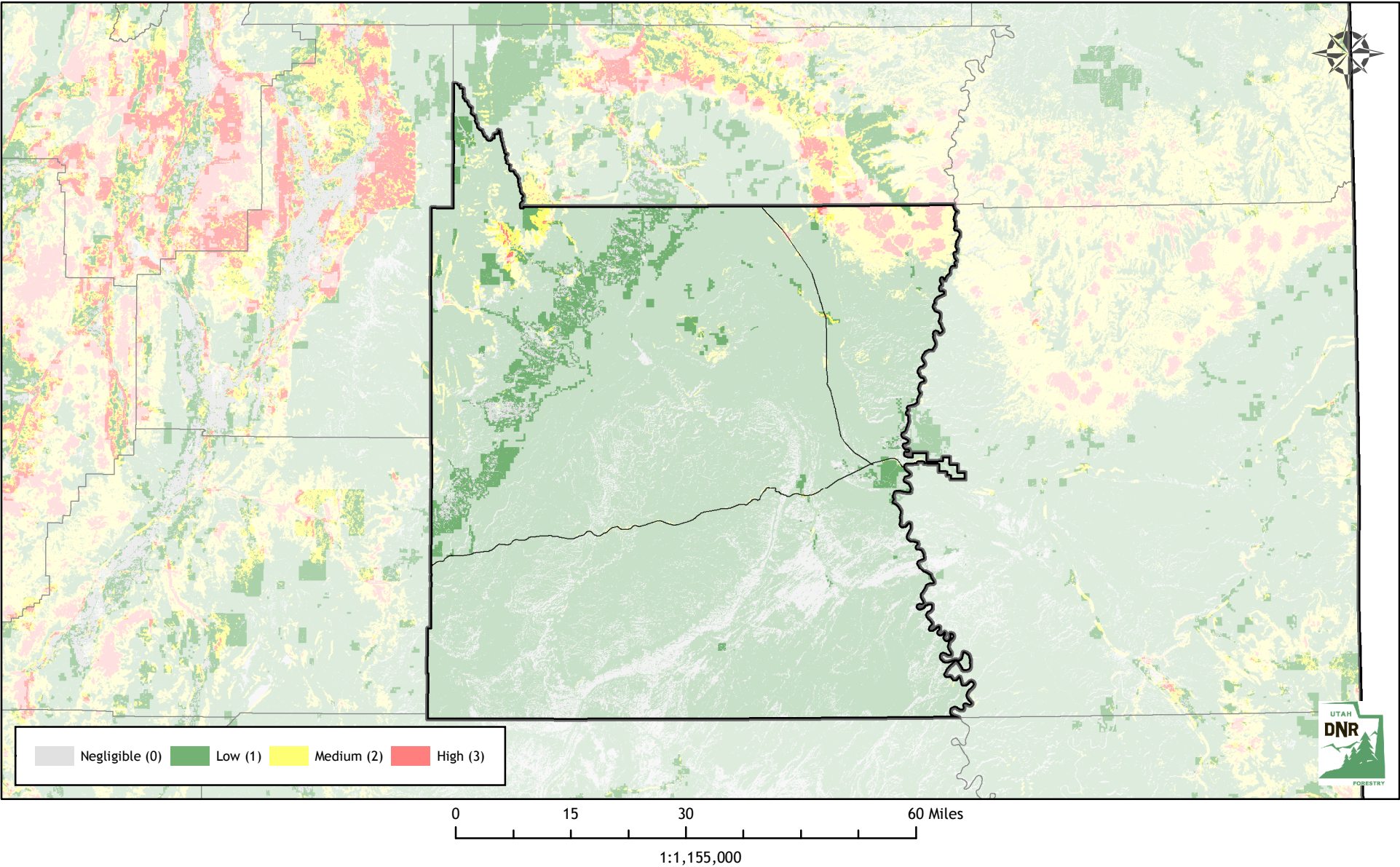
Utah Wildfire Risk Assessment

EMERY COUNTY

Derived from www.UtahWildfireRisk.com

Medium: \$0.30/acre, High: \$0.40/acre
Low Risk: 207,024 Acres (93%)
Medium Risk: 13,220 Acres (6%) - \$3,966
High Risk: 1,521 Acres (1%) - \$608

Risk Assessment Total: \$4,574
Participation Commitment Total: \$16,346



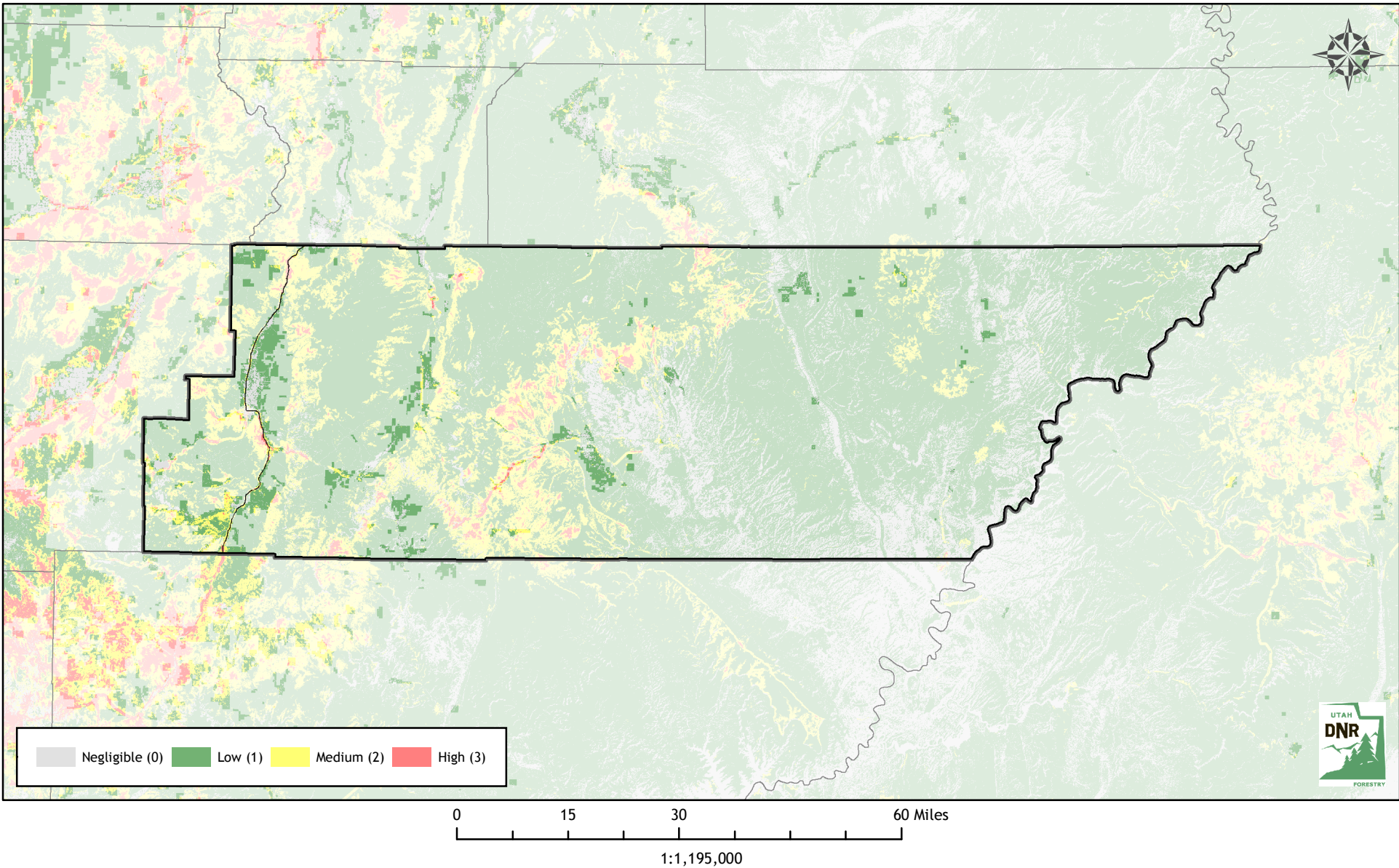
Utah Wildfire Risk Assessment

GARFIELD COUNTY

Derived from www.UtahWildfireRisk.com

Medium: \$0.30/acre, High: \$0.40/acre
Low Risk: 126,181 Acres (84%)
Medium Risk: 21,957 Acres (15%) - \$6,587
High Risk: 2,243 Acres (1%) - \$897

Risk Assessment Total: \$7,484
Participation Commitment Total: \$27,661



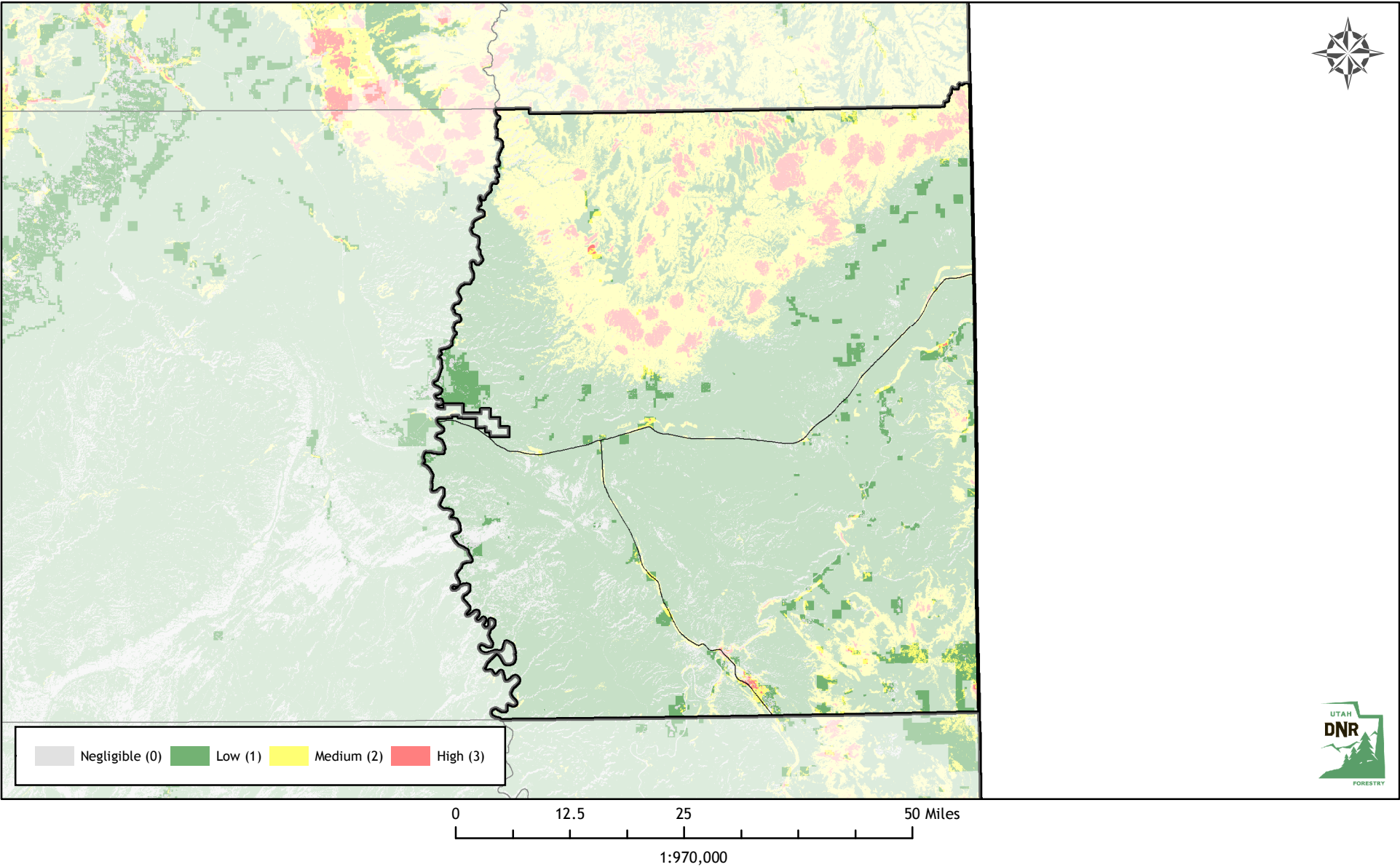
Utah Wildfire Risk Assessment

GRAND COUNTY

Derived from www.UtahWildfireRisk.com

Medium: \$0.30/acre, High: \$0.40/acre
Low Risk: 82,634 Acres (83%)
Medium Risk: 15,802 Acres (16%) - \$4,740
High Risk: 1,140 Acres (1%) - \$456

Risk Assessment Total: \$5,196
Participation Commitment Total: \$50,250



Utah Wildfire Risk Assessment **IRON COUNTY**

Derived from www.UtahWildfireRisk.com

Medium: \$0.30/acre, High: \$0.40/acre

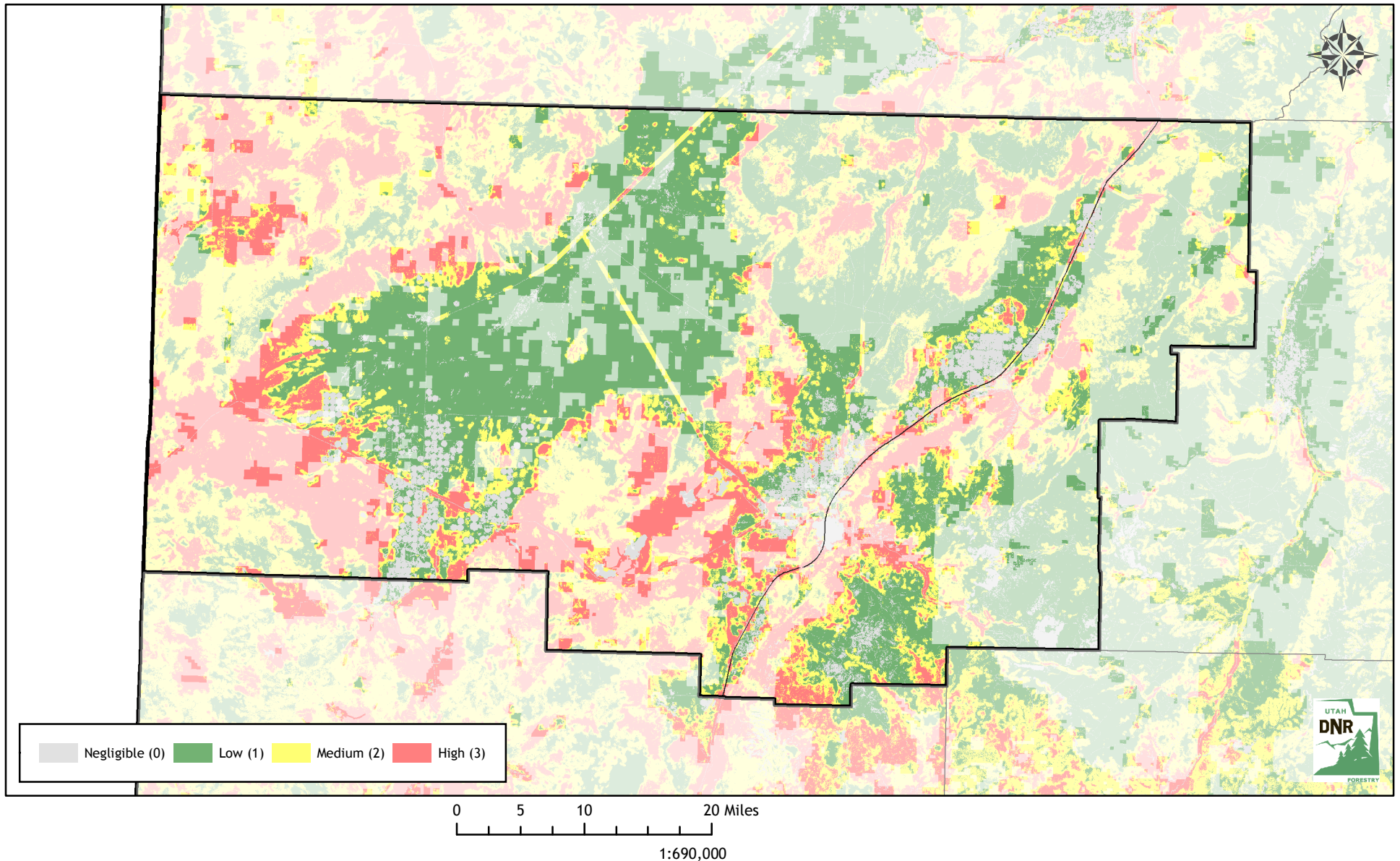
Low Risk: 426,005 Acres (59%)

Medium Risk: 160,651 Acres (22%) - \$48,195

High Risk: 136,481 Acres (19%) - \$54,592

Risk Assessment Total: \$102,788

Participation Commitment Total: \$243,055



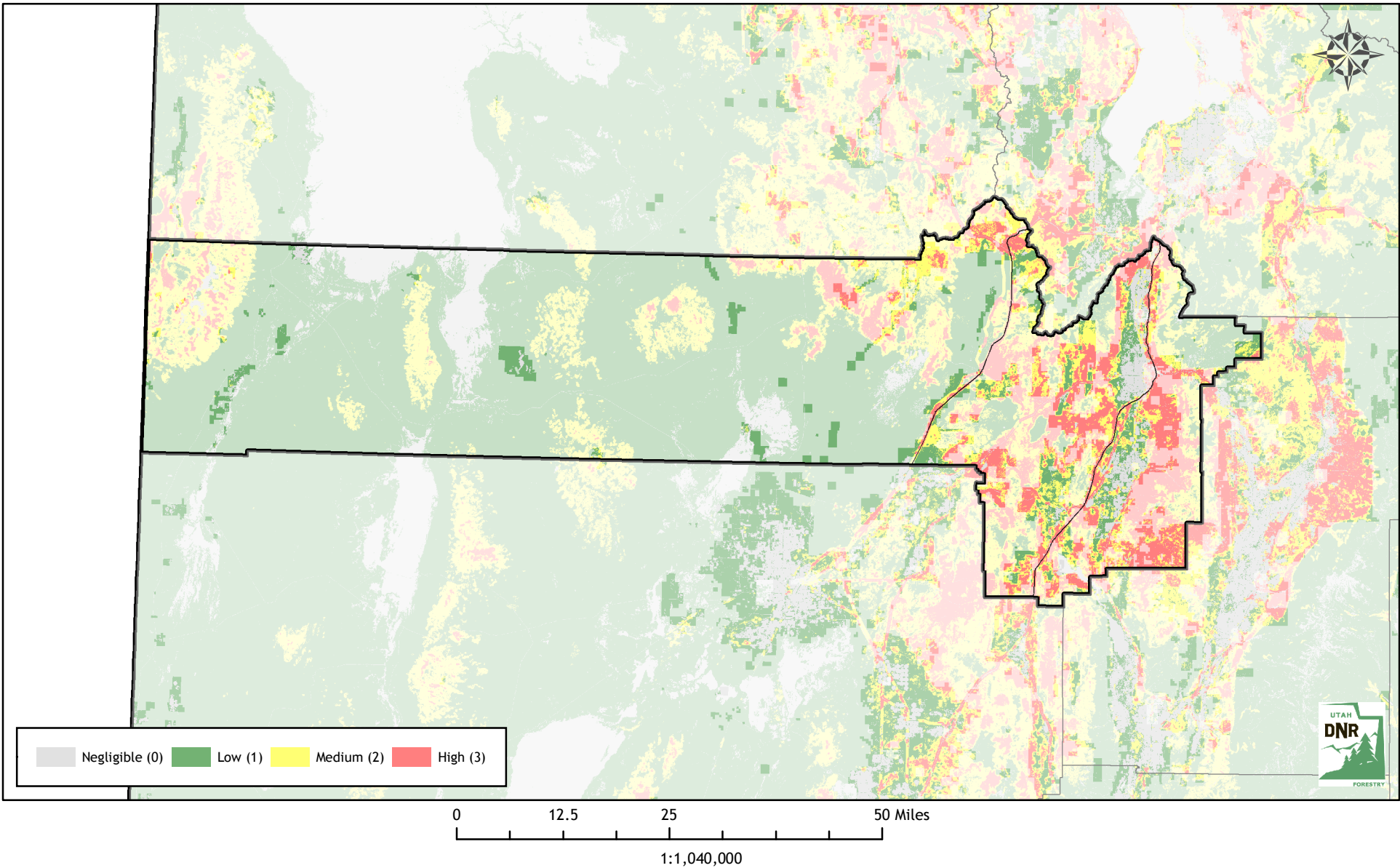
Utah Wildfire Risk Assessment

JUAB COUNTY

Derived from www.UtahWildfireRisk.com

Medium: \$0.30/acre, High: \$0.40/acre
Low Risk: 134,598 Acres (37%)
Medium Risk: 111,830 Acres (30%) - \$33,549
High Risk: 121,549 Acres (33%) - \$48,620

Risk Assessment Total: \$82,169
Participation Commitment Total: \$155,311



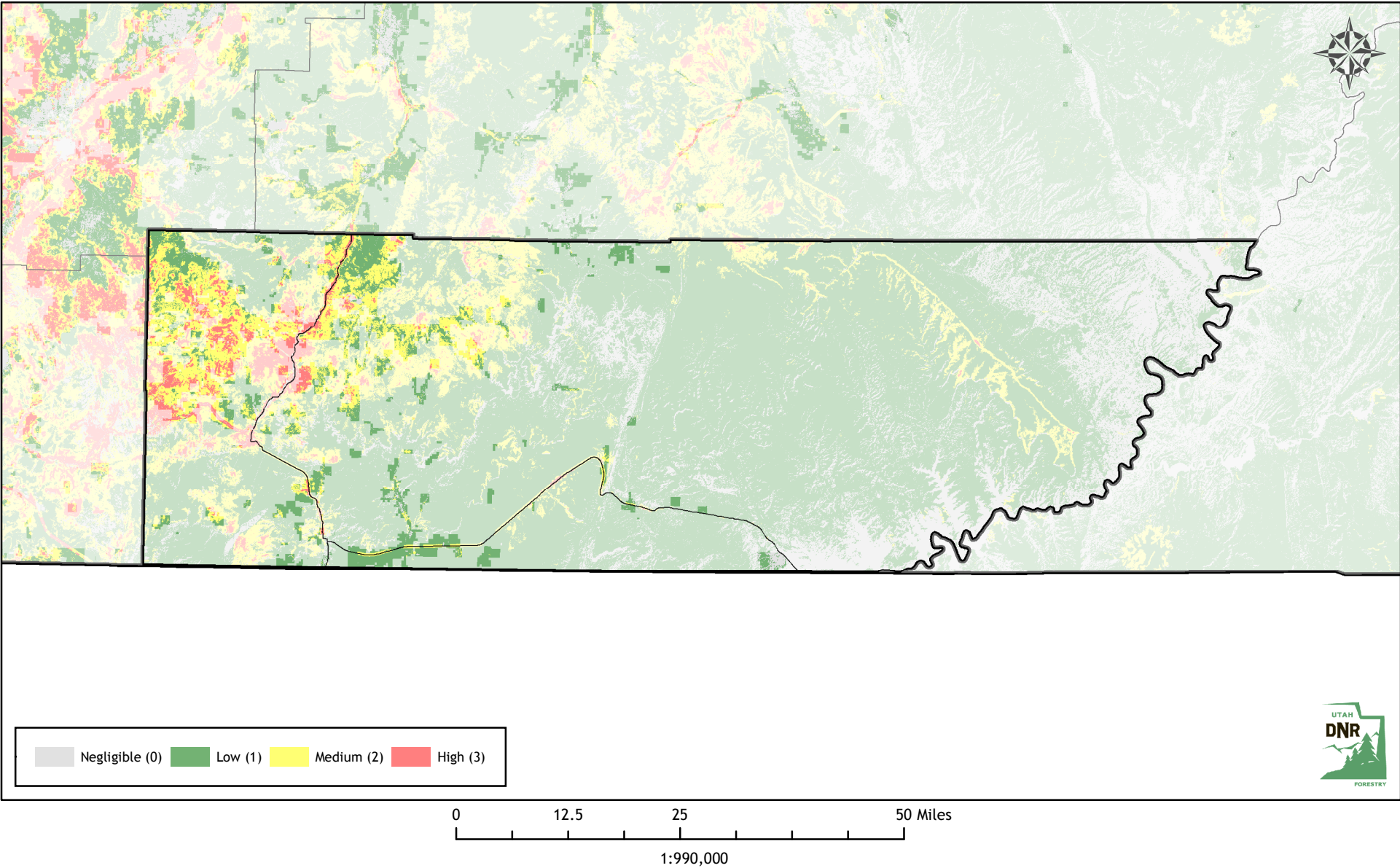
Utah Wildfire Risk Assessment

KANE COUNTY

Derived from www.UtahWildfireRisk.com

Medium: \$0.30/acre, High: \$0.40/acre
Low Risk: 106,558 Acres (42%)
Medium Risk: 118,589 Acres (47%) - \$35,577
High Risk: 28,914 Acres (11%) - \$11,566

Risk Assessment Total: \$47,142
Participation Commitment Total: \$111,612



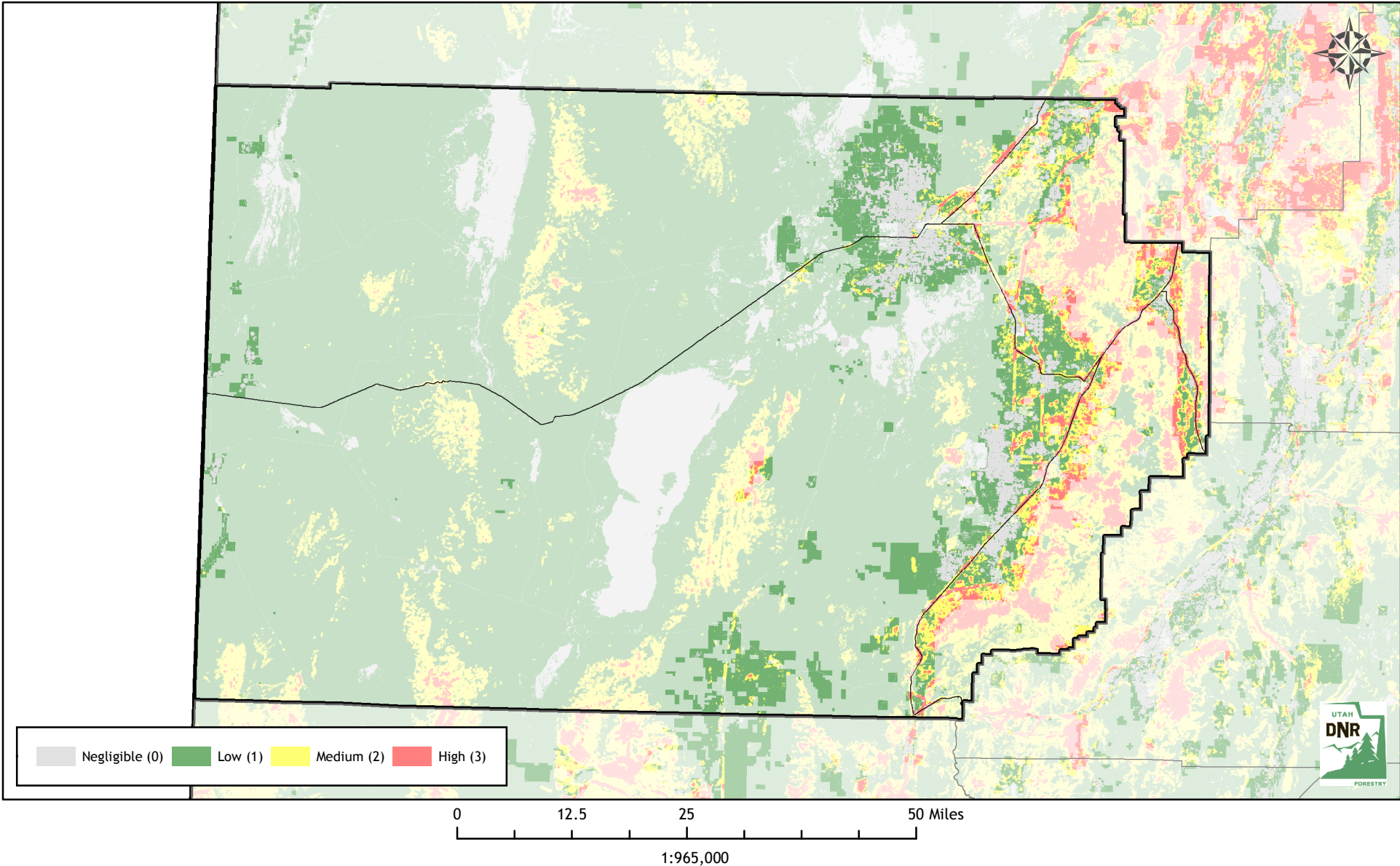
Utah Wildfire Risk Assessment

MILLARD COUNTY

Derived from www.UtahWildfireRisk.com

Medium: \$0.30/acre, High: \$0.40/acre
Low Risk: 410,671 Acres (72%)
Medium Risk: 110,318 Acres (19%) - \$33,096
High Risk: 51,359 Acres (9%) - \$20,544

Risk Assessment Total: \$53,639
Participation Commitment Total: \$235,496



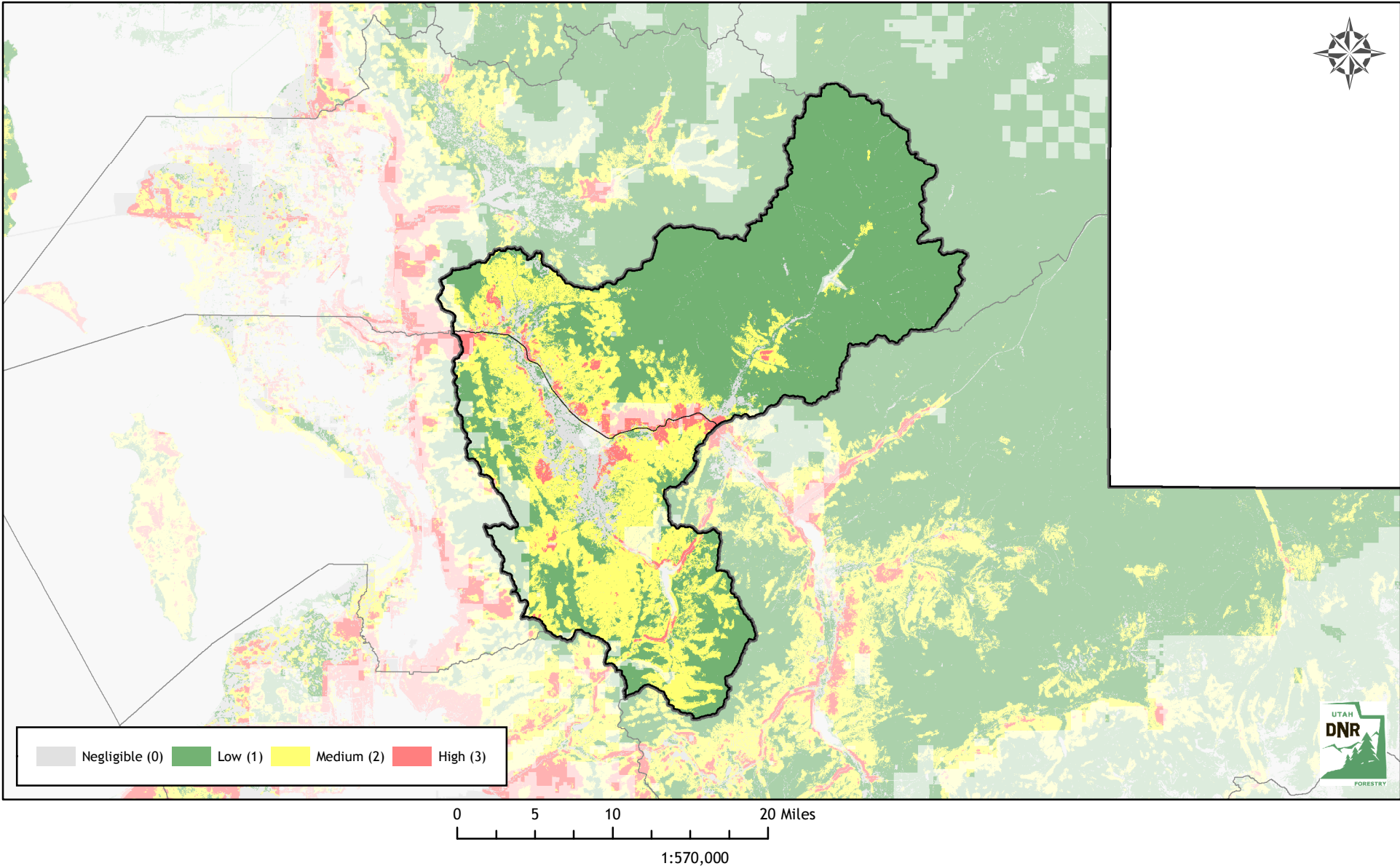
Utah Wildfire Risk Assessment

MORGAN COUNTY

Derived from www.UtahWildfireRisk.com

Medium: \$0.30/acre, High: \$0.40/acre
Low Risk: 241,040 Acres (66%)
Medium Risk: 111,706 Acres (31%) - \$33,512
High Risk: 10,097 Acres (3%) - \$4,039

Risk Assessment Total: \$37,551
Participation Commitment Total: \$85,887



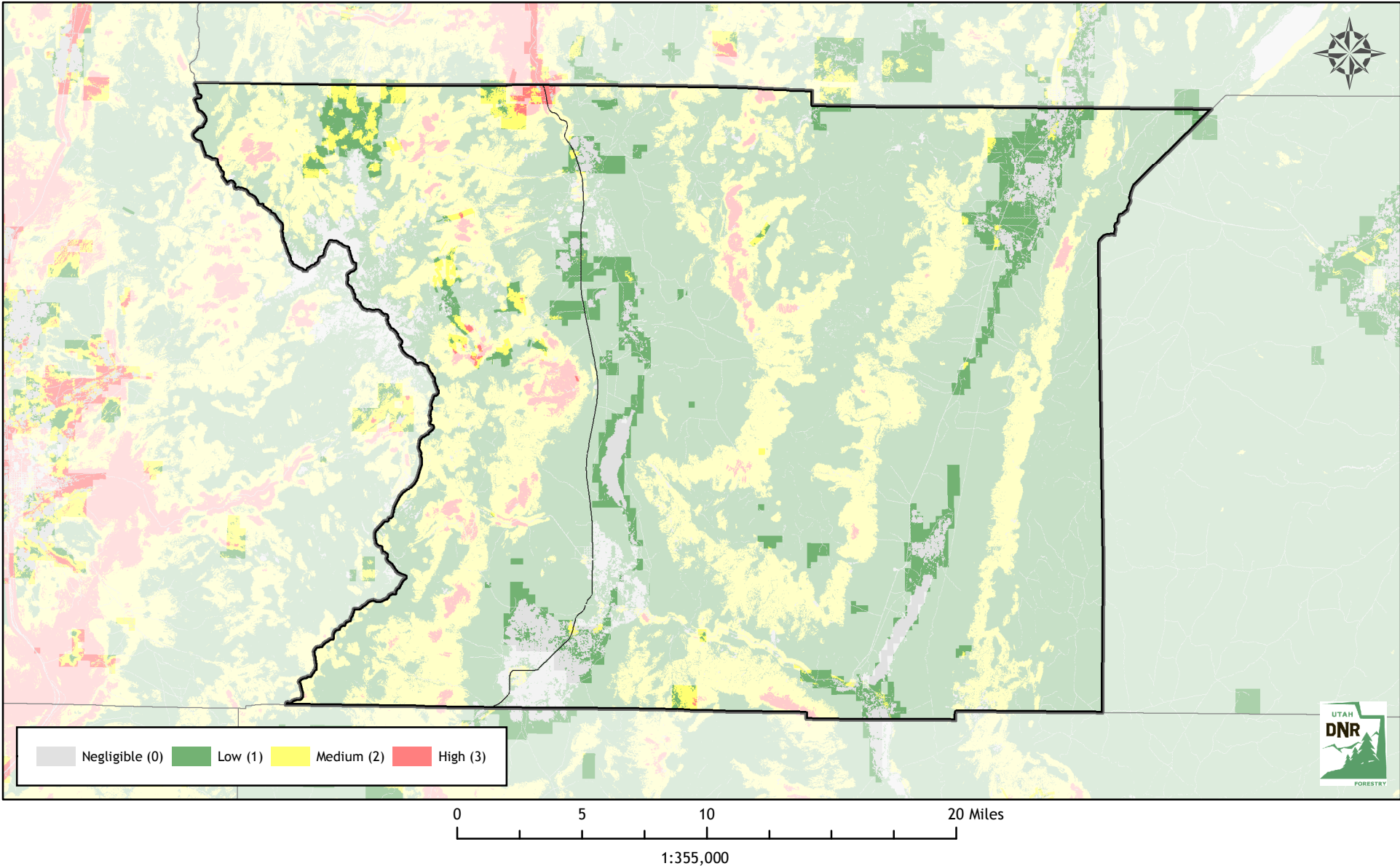
Utah Wildfire Risk Assessment

PIUTE COUNTY

Derived from www.UtahWildfireRisk.com

Medium: \$0.30/acre, High: \$0.40/acre
Low Risk: 41,047 Acres (85%)
Medium Risk: 6,286 Acres (13%) - \$1,886
High Risk: 703 Acres (1%) - \$281

Risk Assessment Total: \$2,167
Participation Commitment Total: \$2,528



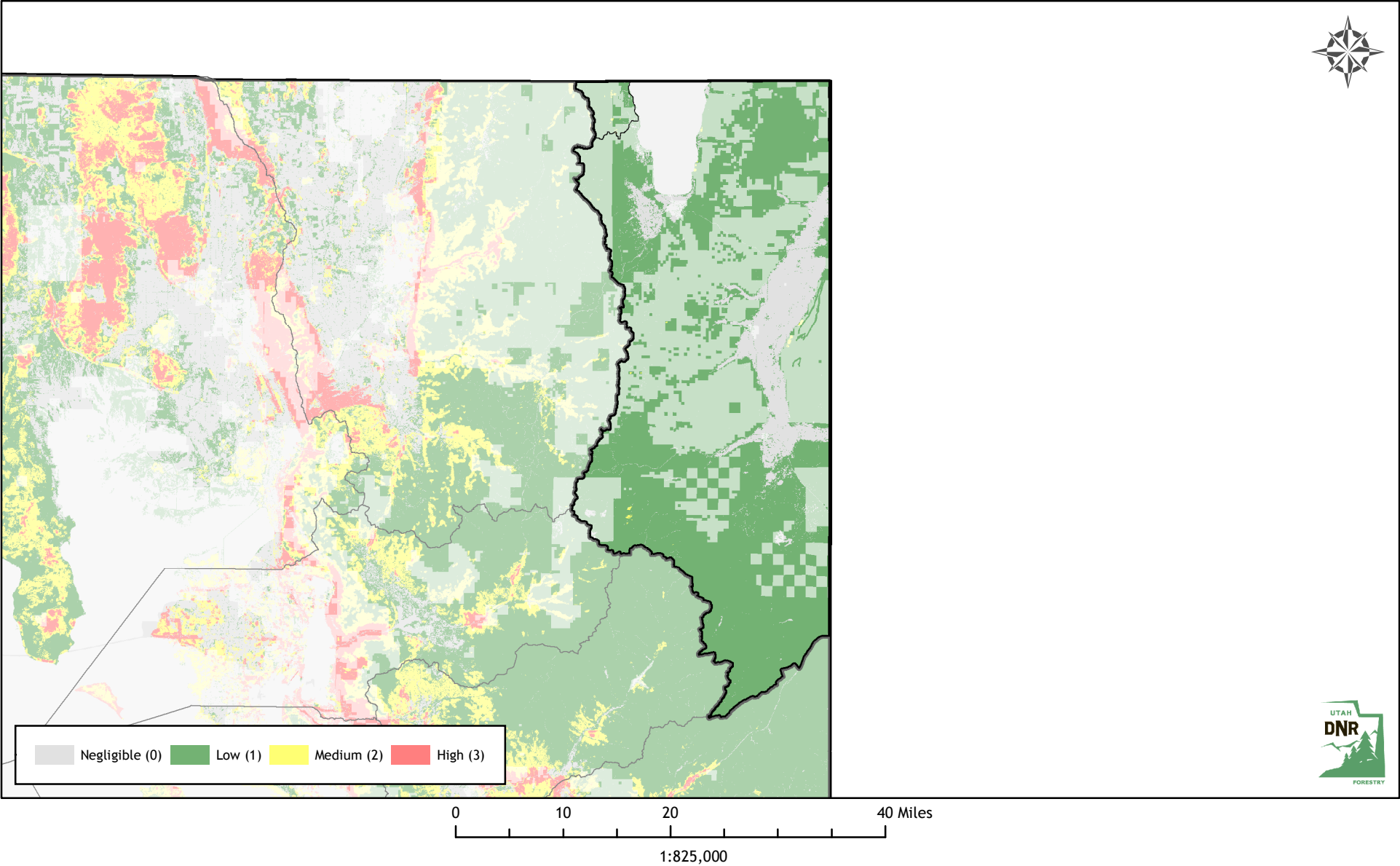
Utah Wildfire Risk Assessment

RICH COUNTY

Derived from www.UtahWildfireRisk.com

Medium: \$0.30/acre, High: \$0.40/acre
Low Risk: 376,370 Acres (100%)
Medium Risk: 208 Acres (0%) - \$62
High Risk: 0 Acres (0%) - \$0

Risk Assessment Total: \$62
Participation Commitment Total: \$6,605



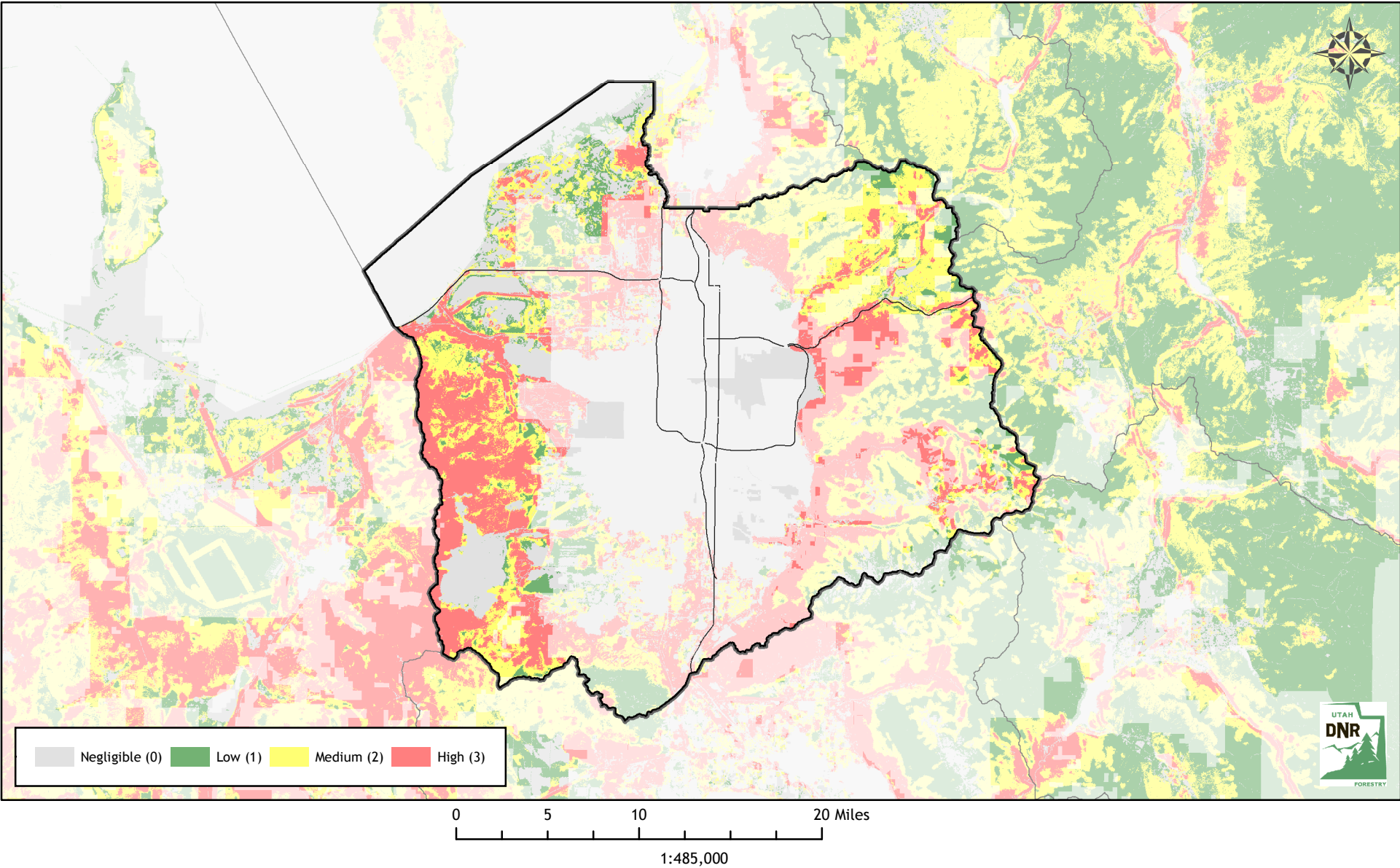
Utah Wildfire Risk Assessment

SALT LAKE COUNTY

Derived from www.UtahWildfireRisk.com

Medium: \$0.30/acre, High: \$0.40/acre
Low Risk: 57,851 Acres (36%)
Medium Risk: 48,215 Acres (30%) - \$14,464
High Risk: 56,604 Acres (35%) - \$22,642

Risk Assessment Total: \$37,106
Participation Commitment Total: \$165,072



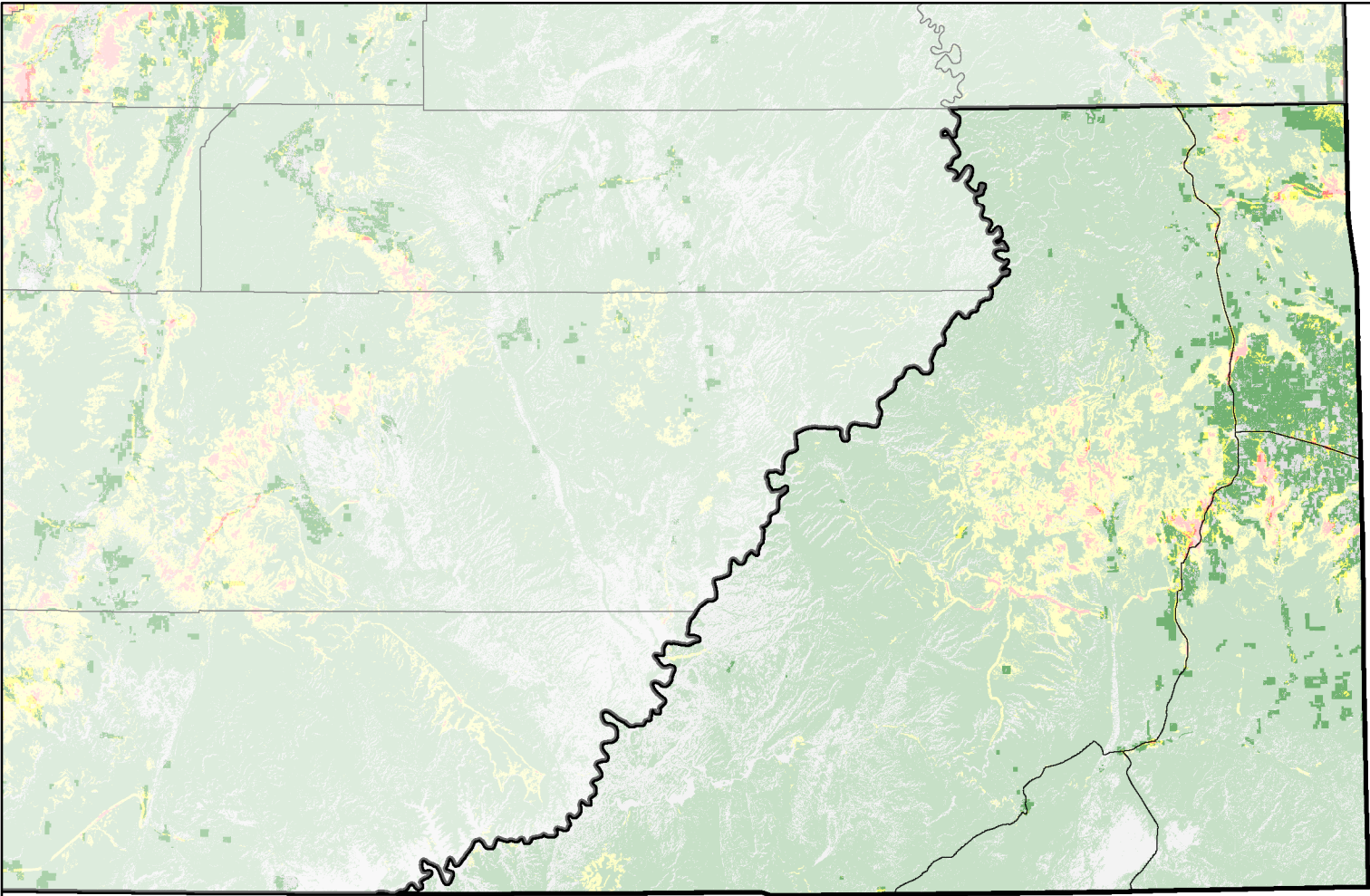
Utah Wildfire Risk Assessment

SAN JUAN COUNTY

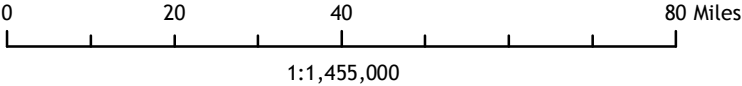
Derived from www.UtahWildfireRisk.com

Medium: \$0.30/acre, High: \$0.40/acre
Low Risk: 355,725 Acres (87%)
Medium Risk: 47,581 Acres (12%) - \$14,274
High Risk: 4,337 Acres (1%) - \$1,735

Risk Assessment Total: \$16,009
Participation Commitment Total: \$67,631



Negligible (0) Low (1) Medium (2) High (3)

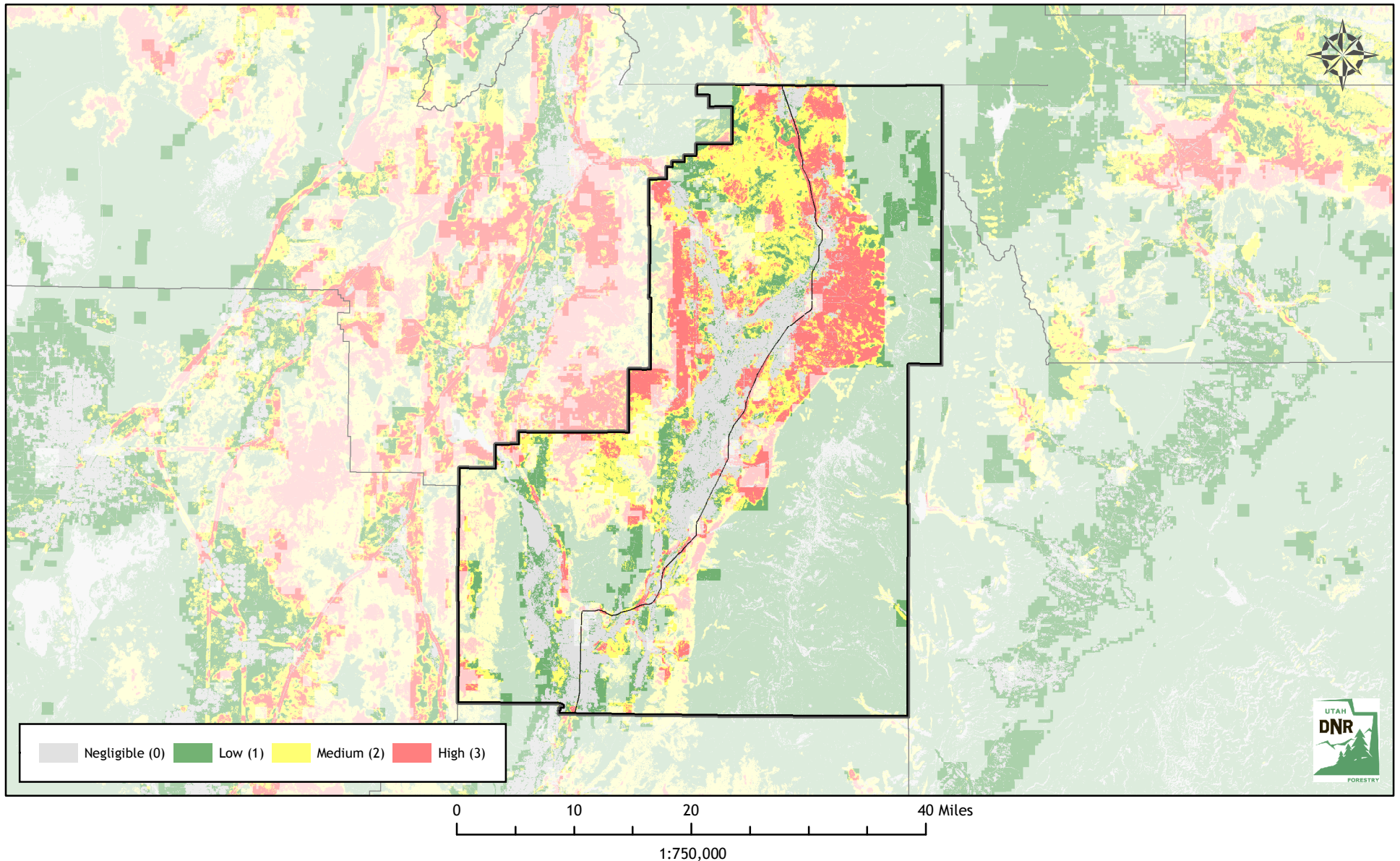


Utah Wildfire Risk Assessment **SANPETE COUNTY**

Derived from www.UtahWildfireRisk.com

Medium: \$0.30/acre, High: \$0.40/acre
Low Risk: 199,284 Acres (47%)
Medium Risk: 124,947 Acres (30%) - \$37,484
High Risk: 99,266 Acres (23%) - \$39,706

Risk Assessment Total: \$77,191
Participation Commitment Total: \$154,746



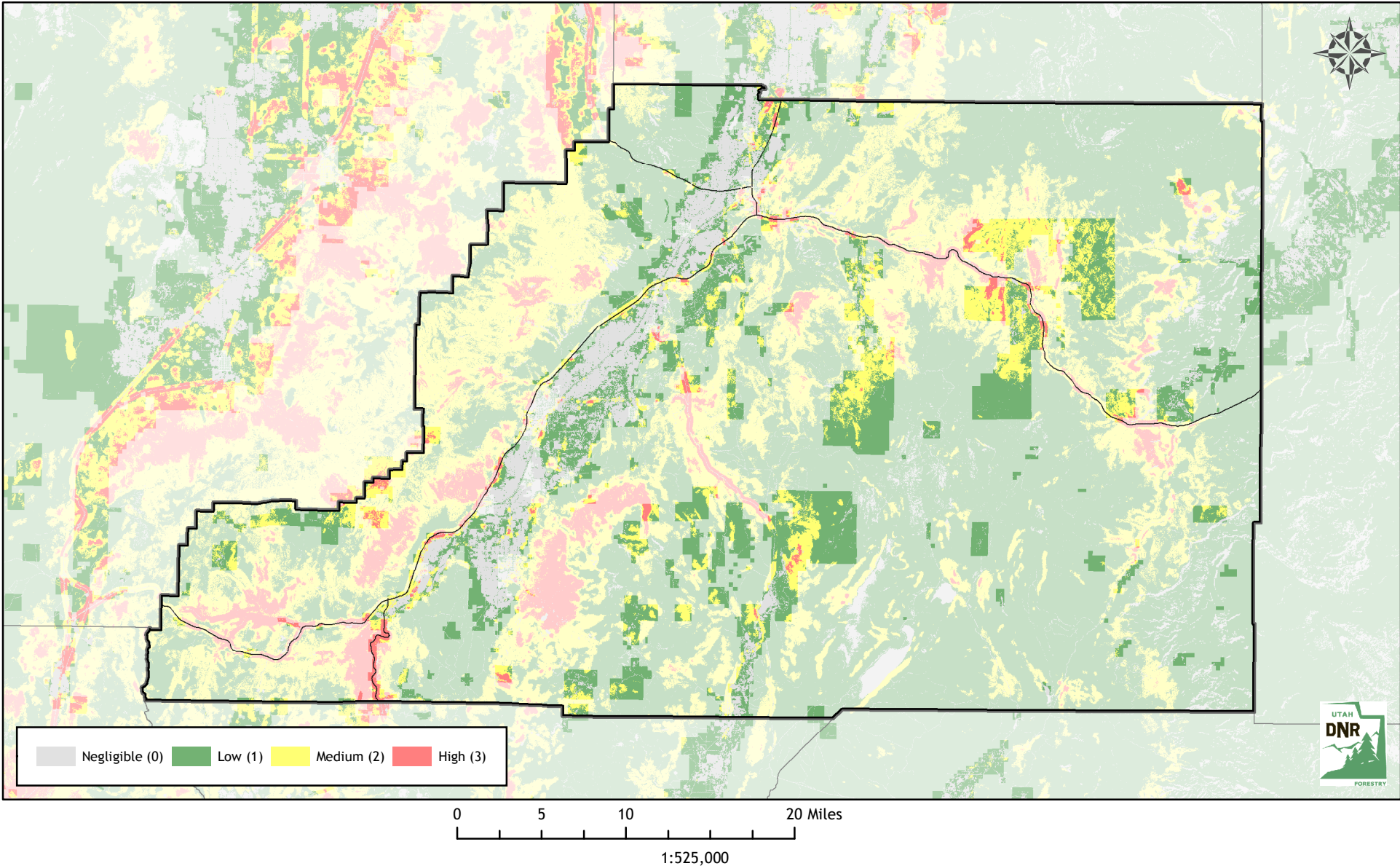
Utah Wildfire Risk Assessment

SEVIER COUNTY

Derived from www.UtahWildfireRisk.com

Medium: \$0.30/acre, High: \$0.40/acre
Low Risk: 161,942 Acres (73%)
Medium Risk: 52,376 Acres (24%) - \$15,713
High Risk: 7,518 Acres (3%) - \$3,007

Risk Assessment Total: \$18,720
Participation Commitment Total: \$42,599



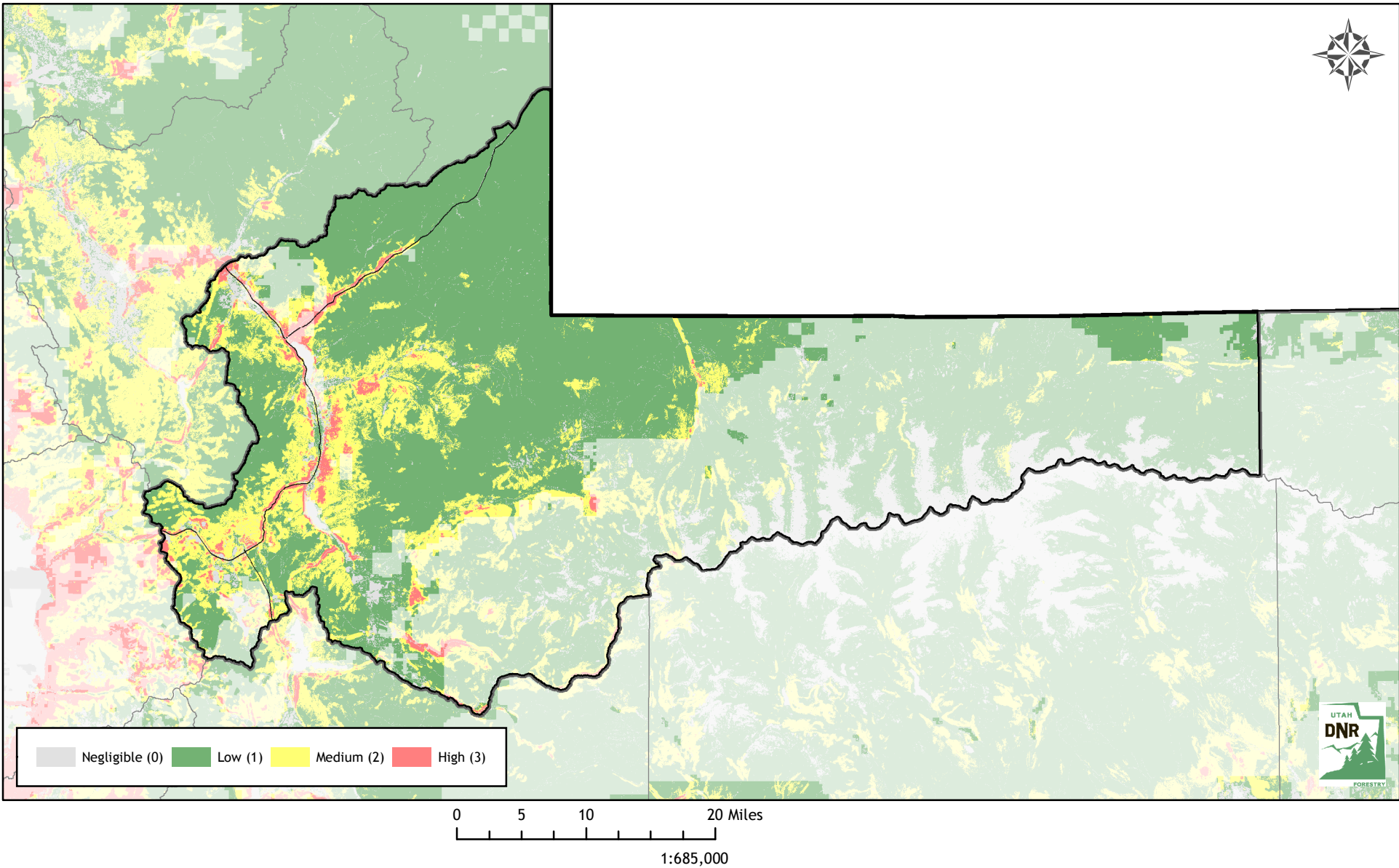
Utah Wildfire Risk Assessment

SUMMIT COUNTY

Derived from www.UtahWildfireRisk.com

Medium: \$0.30/acre, High: \$0.40/acre
Low Risk: 471,676 Acres (76%)
Medium Risk: 129,740 Acres (21%) - \$38,922
High Risk: 17,780 Acres (3%) - \$7,112

Risk Assessment Total: \$46,034
Participation Commitment Total: \$102,846



Utah Wildfire Risk Assessment **TOOELE COUNTY**

Derived from www.UtahWildfireRisk.com

Medium: \$0.30/acre, High: \$0.40/acre

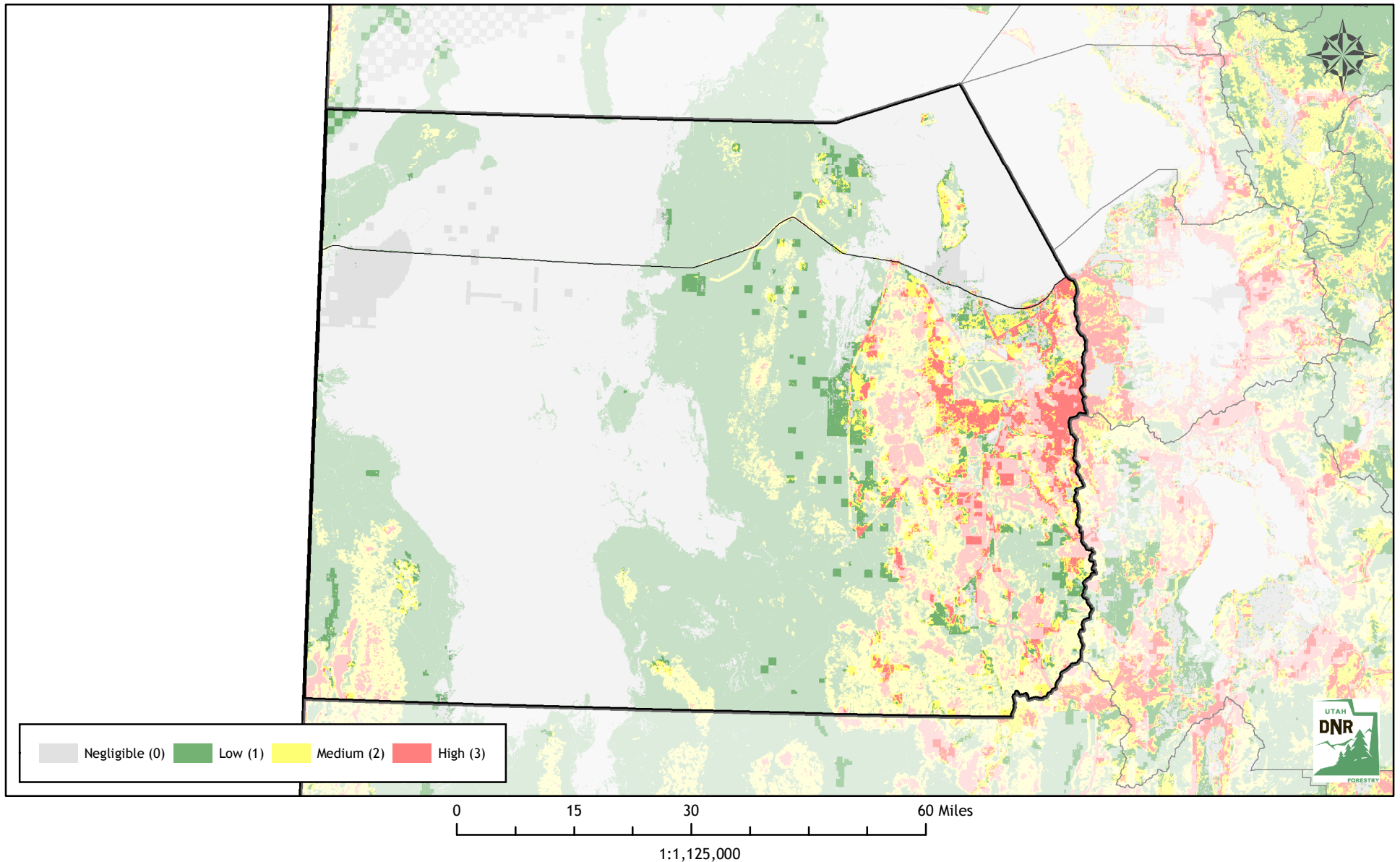
Low Risk: 225,918 Acres (50%)

Medium Risk: 122,404 Acres (27%) - \$36,721

High Risk: 102,930 Acres (23%) - \$41,172

Risk Assessment Total: \$77,893

Participation Commitment Total: \$738,125



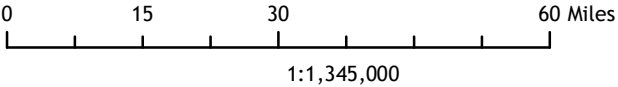
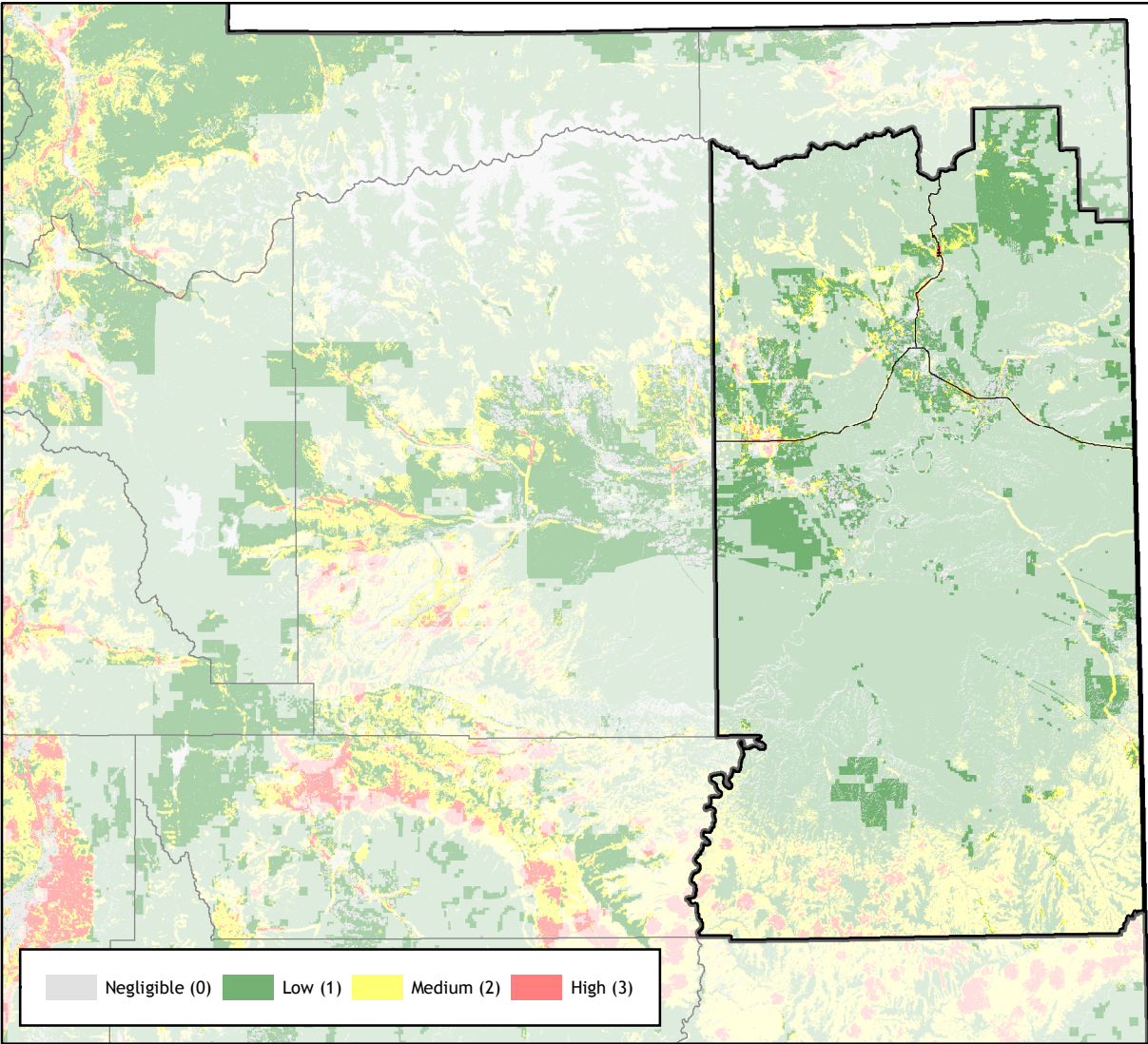
Utah Wildfire Risk Assessment

UINTAH COUNTY

Derived from www.UtahWildfireRisk.com

Medium: \$0.30/acre, High: \$0.40/acre
Low Risk: 375,406 Acres (90%)
Medium Risk: 39,496 Acres (9%) - \$11,849
High Risk: 2,246 Acres (1%) - \$898

Risk Assessment Total: \$12,747
Participation Commitment Total: \$77,703



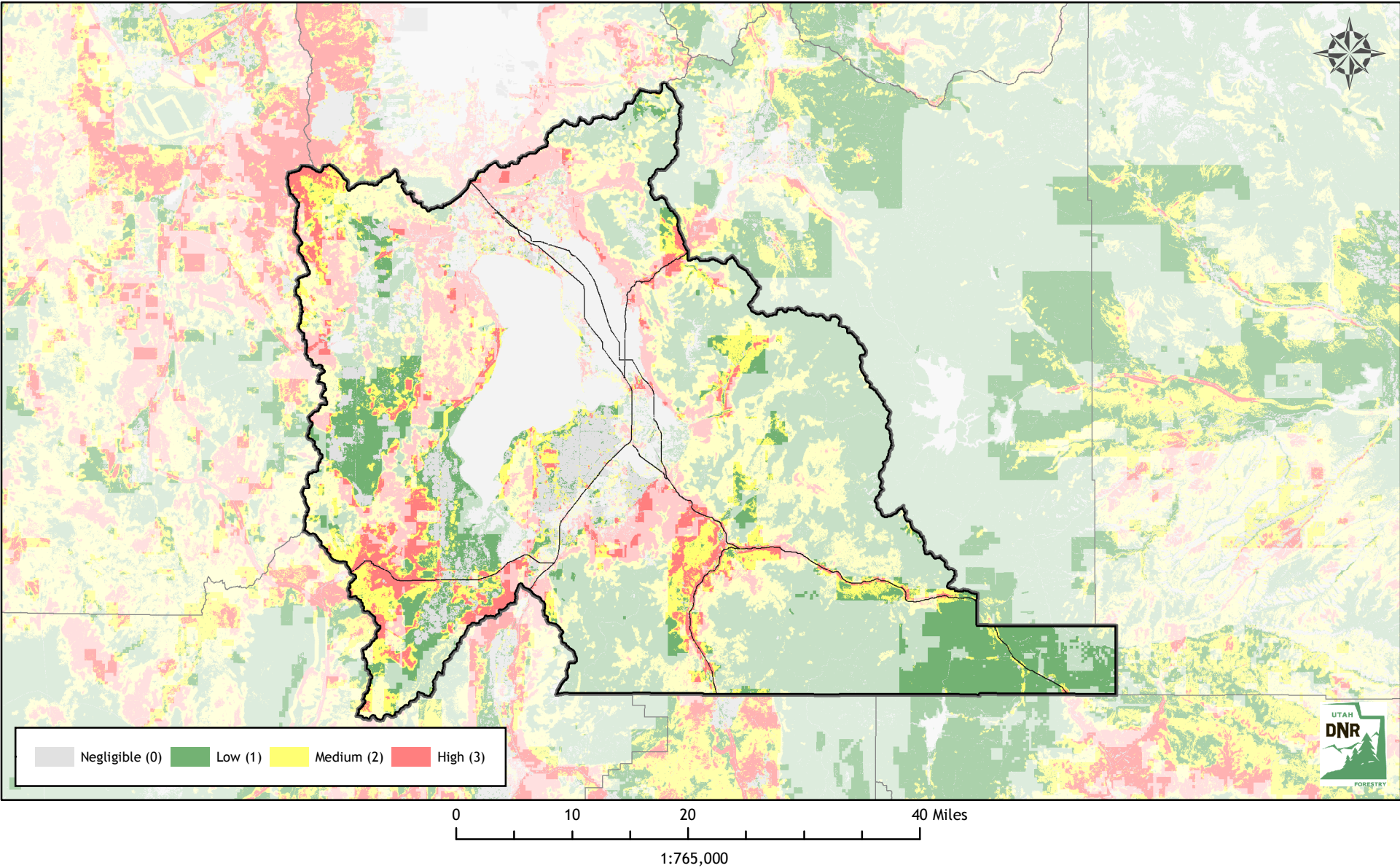
Utah Wildfire Risk Assessment

UTAH COUNTY

Derived from www.UtahWildfireRisk.com

Medium: \$0.30/acre, High: \$0.40/acre
Low Risk: 203,575 Acres (55%)
Medium Risk: 103,681 Acres (28%) - \$31,104
High Risk: 64,985 Acres (17%) - \$25,994

Risk Assessment Total: \$57,099
Participation Commitment Total: \$483,847



Utah Wildfire Risk Assessment **WASATCH COUNTY**

Derived from www.UtahWildfireRisk.com

Medium: \$0.30/acre, High: \$0.40/acre

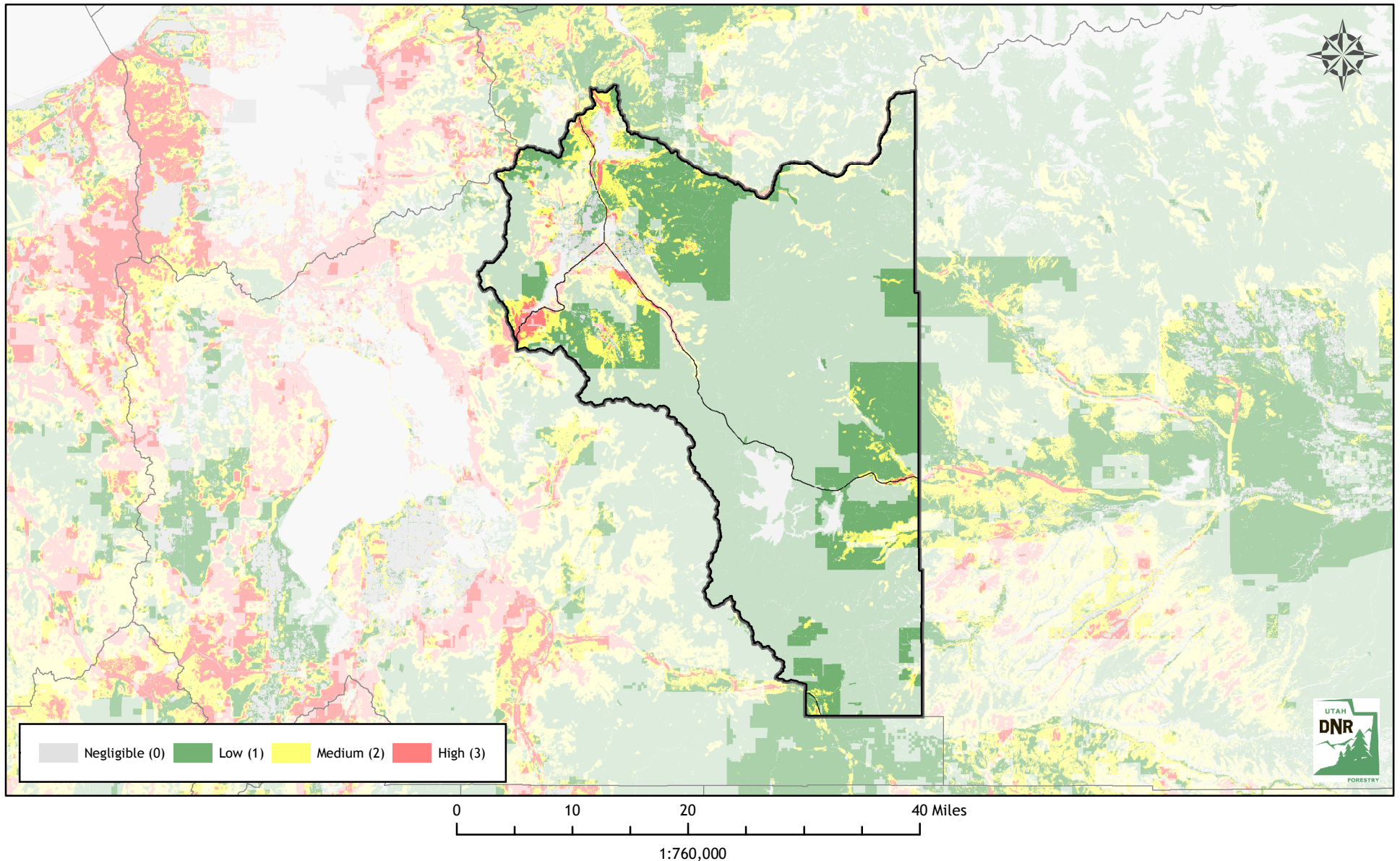
Low Risk: 175,070 Acres (78%)

Medium Risk: 41,517 Acres (19%) - \$12,455

High Risk: 7,560 Acres (3%) - \$3,024

Risk Assessment Total: \$15,479

Participation Commitment Total: \$158,945



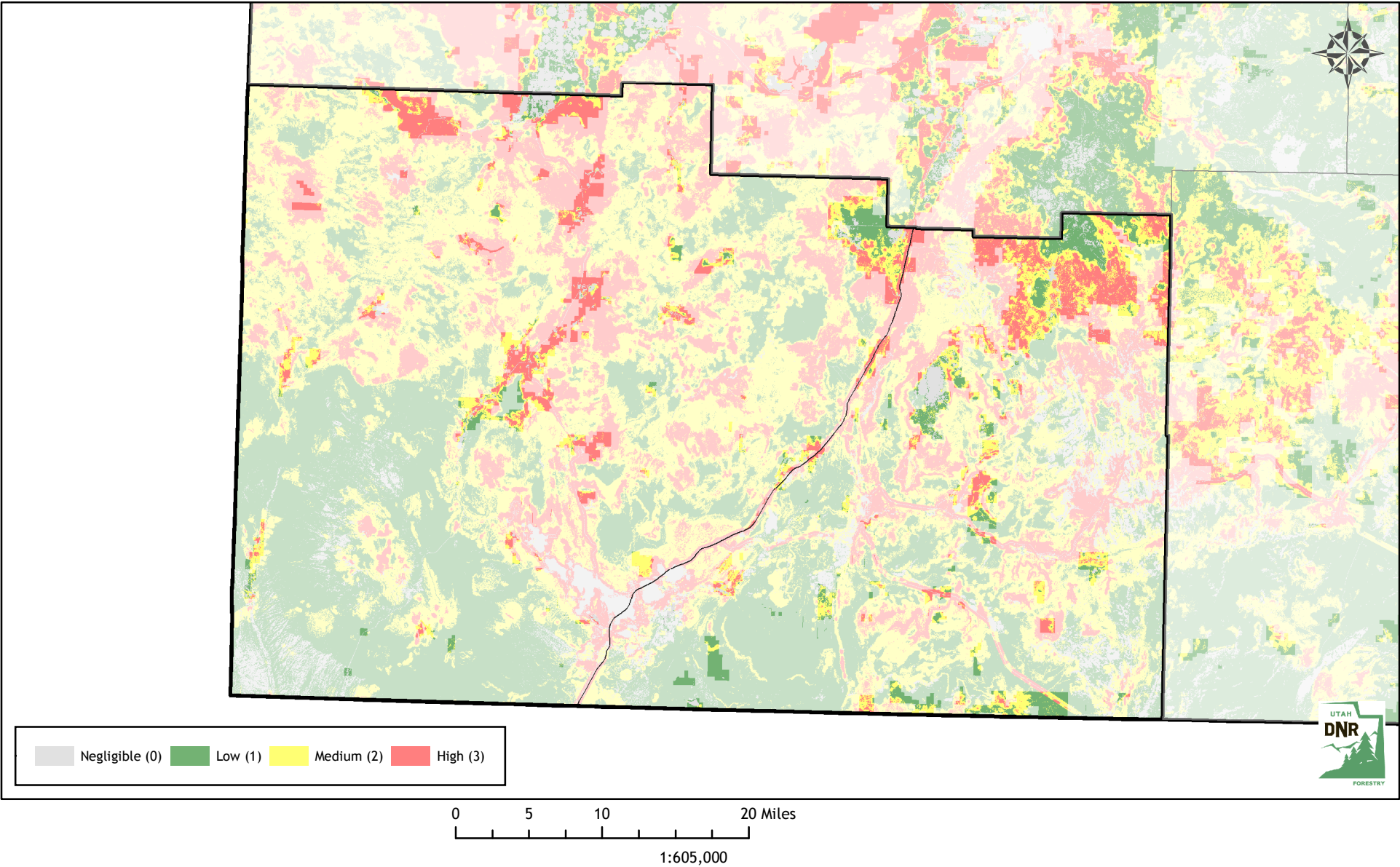
Utah Wildfire Risk Assessment

WASHINGTON COUNTY

Derived from www.UtahWildfireRisk.com

Medium: \$0.30/acre, High: \$0.40/acre
Low Risk: 41,177 Acres (26%)
Medium Risk: 56,779 Acres (36%) - \$17,034
High Risk: 61,129 Acres (38%) - \$24,451

Risk Assessment Total: \$41,485
Participation Commitment Total: \$129,012



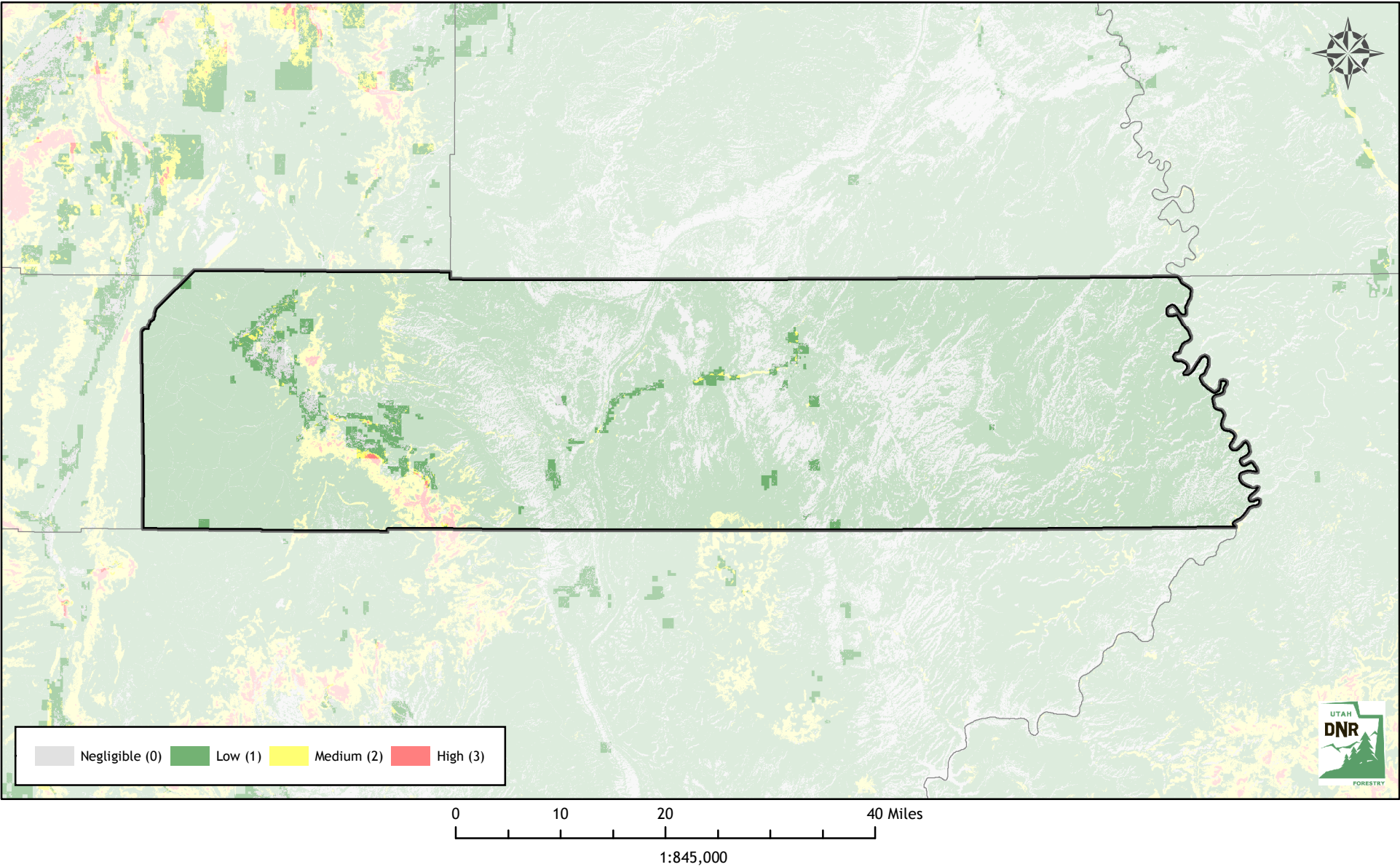
Utah Wildfire Risk Assessment

WAYNE COUNTY

Derived from www.UtahWildfireRisk.com

Medium: \$0.30/acre, High: \$0.40/acre
Low Risk: 51,202 Acres (94%)
Medium Risk: 2,834 Acres (5%) - \$850
High Risk: 346 Acres (1%) - \$138

Risk Assessment Total: \$989
Participation Commitment Total: \$1,146



Utah Wildfire Risk Assessment **WEBER COUNTY**

Derived from www.UtahWildfireRisk.com

Medium: \$0.30/acre, High: \$0.40/acre
Low Risk: 141,663 Acres (75%)
Medium Risk: 36,222 Acres (19%) - \$10,867
High Risk: 11,551 Acres (6%) - \$4,620

Risk Assessment Total: \$15,487
Participation Commitment Total: \$29,455

