

Alta IHC 2020 Season Report



Index

- 2. Index**
- 3. Season Summary**
- 4. Season Data**
- 5. 2020 Fires**
- 6. Crew Organization Chart**

Season Summary

On May 6th 2020, the Alta Hotshots welcomed back 17 crew members from previous seasons and added 5 new hires for the 2020 field season; the crew completed 60 hours of preparedness training and successfully passed a base review before going nationally available on May 19th.

The 2020 fire season started with a bang – as the crew was requested to respond to a local fire 3 days into our critical training. The crew took the assignment and spent 5 days on the Saddle Fire. After being released from the fire the crew returned back to station and completed 3 more days of preparedness training. After completion of our preparedness training the crew completed 4 weeks of fuels reduction work and in the same time frame responded to a handful of local fires. We received a dispatch to start our first 14 day assignment on 6/25. This assignment was the start of 6 consecutive 14 day rolls for the crew. Our season was finished after the completion of our last 14 day roll.

The season was filled with many diverse assignments and challenging situations throughout the season. The crew was prepared to and ready to tackle the challenges that working in a pandemic present – but unfortunately the crew did get impacted and in result went unavailable for a short period of time due to COVID-19 exposures.

Overall, it was a challenging yet successful season. Numerous training assignments were ongoing throughout the season; these assignments ranged from TFLD, CRWB, HEQB, FFT1, ICT3, ICT4, and ICT5 training assignments. The crew was assembled for 164 days and in that time was assigned to 21 fires in 4 states; 10 task books were completed and countless learning opportunities seized throughout the season.

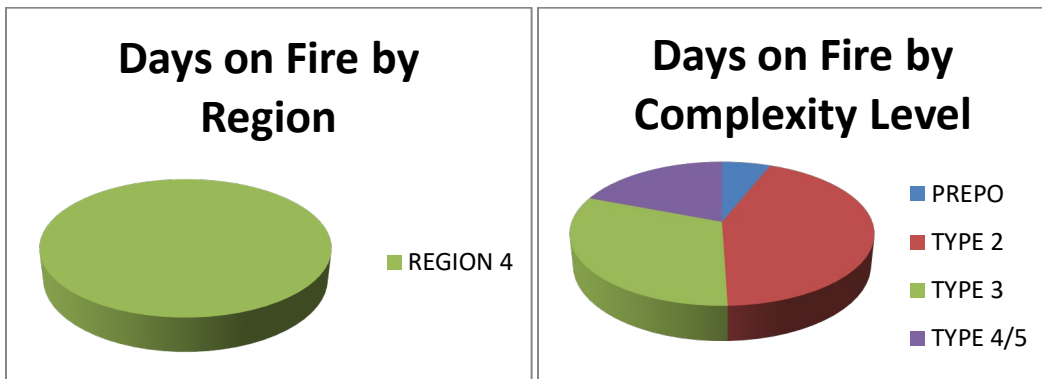


2020 ALTA IHC SEASON DATA

QUESTIONS		RESPONSE
AVAILABILITY		
1	Total days crew was assembled?	164
1a	Start Date	5/6/2020
1b	End Date	10/16/2020
2	Total number of days assigned to incidents? <i>(Includes travel)</i>	113
2a	How many days were in official travel status?	14
2b	How many 14 day assignments were completed during total number of days assigned?	6
2bb	How many assignment extensions?	0
2c	Number of days on project work while assigned? <i>(list specific type: e.g.. Trails, fuels etc.)</i>	1
2d	Number of days on project work while not assigned?	11
3	Total number of days off?	29
3a	Days off in pay status?	7
3b	Days off in non- pay status?	22
3c	Number of days in station or otherwise and not accounted for above?	2
TRAINING		
4	Number of days in training?	6
5	Number of days of non fire mandatory training?	0
6	Number of instructor hours dedicated to non-crew training courses?	80
6a	Number of task books initiated?	9
6b	Number of task books completed?	10
TRANSPORTATION		
7	Total miles driven? <i>(Total of all vehicles)</i>	57,211
8	How many vehicles do you have?	5
9	Number of vehicle accidents? (Vehicle down for repair due to accident)	0
9a	Number of injury vehicle accidents?	0
9b	Vehicle accidents above where fault was Government Driver?	0
10	Number of days vehicle down for failure or repairs? <i>(Non-accident, total all vehicles)</i>	12
11	How many times did your crew fly? <i>(Count each leg as a flight)</i>	0
11a	Commercial	n/a
11b	Charter	n/a
PERSONNEL		
12	Total number of funded personnel on crew?	23
13	On average how many personnel did you have on incidents?	20
13a	Number of days crew leadership fulfilled incident leadership positions?	48
14	Total number of career appointments? <i>(excluding apprentices)</i>	7
15	Number of apprentices on crew?	n/a
16	Number of career positions that were vacant?	1
ACCIDENTS AND INJURIES		
18	Number of non-injury incidents? (bee stings, poison oak, etc)	4
19	Number of injury accidents?	4
20	Number of injury accidents that required medical attention? (no lost time)	0
21	Number of injury accidents that required medical attention? (lost time)	4
PROJECTS		
22	Total Fuels Treatment Acres? <i>(while assigned and unassigned)</i>	109
22a	Mechanical? <i>(which includes RX prep work)</i>	109
22b	Burned?	0

Incident Support		
23	Number of shifts crew personnel filled other ICS positions while assigned?	10
23a	ICS Position(s) filled? ie; HEQB, FELB, etc	ICT3, ICT4, ICT5, DIVS, TFLD, HEQB

2020 Fires



Management Level	Date	Incident Name	Incident Number	Operational Periods
Type 3	5/13/2020	SADDLE	UT-NES-2000119	4
Type 4	5/31/2020	TABBY CANYON	UT-SLD-000177	2
Type 4	6/1/2020	NORTH STANSBURY	UT-NWS-000189	2
Type 4	6/6/2020	SEEP RIDGE	UT-VLD-1000116	3
Type 4	6/14/2020	BIG SPRINGS	UT-NWS-000285	3
Type 3	6/26/2020	ROCK PATCH	UT-RID-200216	3
Type 2	6/29/2020	CANAL	UT-SCS-200233	10
Type 4	7/9/2020	BAKER	UT-RID-200295	1
Type 4	7/14/2020	ABBOTT	UT-NES-100214	2
Type 2	7/16/2020	BIG SUMMIT	NV-ELD-040078	4
Type 3	7/19/2020	STEWART CANYON	NV-ELD-040082	5
Type 4	7/24/2020	SANDY	UT-DIF-000532	2
Type 4	7/27/2020	CRESTLINE	UT-DIF-000580	1
Type 3	7/31/2020	HOLLOW	UT-SCS-200245	3
Type 4	8/3/2020	WATER CANYON	UT-SES-000223	3
Type 3	8/7/2020	PUMPKIN	ID-SWS-000558	8
Type 3	8/21/2020	COPELAND	ID-SIS-000452	5
Type 2	8/31/2020	SLINK	NV-HTF-030684	4
Type 2	9/8/2020	WILLIAM	UT-NWS-000891	11
Type 3	9/13/2020	BATTLE CREEK 2	UT-UWF-000934	3
Type 2	9/27/2020	EAST FORK	UT-ASF-100340	14

Crew Organization Chart

