

State of Utah, Department of Natural Resources- Division of Forestry, Fire, and
State Lands



Lone Peak Interagency Hotshot Crew





Martin Fire - Owyhee Indian Reservation, NV

TABLE OF CONTENTS

<u>Season Summary</u>	<u>3</u>
<u>Personnel</u>	<u>4</u>
<u>Training Summary</u>	<u>5</u>
<u>Fire Assignments</u>	<u>6</u>
<u>Incident History</u>	<u>7</u>
<u>Project Work</u>	<u>8</u>
<u>Safety</u>	<u>9</u>
<u>Season Data Summary</u>	<u>10</u>
<u>Crew Roster</u>	<u>11</u>

2018 Season Summary

The 2018 fire season started April 16 with the standard 80 hours of “critical training”. During this time the crew spends two weeks in a class room setting and in the field going over normal crew functions and certain scenarios that might be experienced throughout a fire season. During this training, the crew superintendent and longtime Lone Peak member of 9 years accepted the Jackson IHC Superintendent position. This dropped the crew to type II I.A. status for the upcoming season. The crew started and ended the season in type II I.A. status, but was able to status as a type 1 crew in the middle part of the season when Ryan LaFontaine detailed into the Superintendent position. Due to Utah’s heavy fire load this season, Ryan was eventually pulled back to the Northeast Area where he holds the FMO position. Regardless of status, with the busy season, Lone Peak was assigned to three different regions and five states throughout the season and we were committed on assignment for 119 days. With no serious injuries and a lot of great work shifts put in, the crew felt very successful at the end of the fire season.



2018 LONE PEAK HOTSHOTS

Personnel

Personnel movement began early on prior to the start of the fire season. Clint Kelly, one of our Squad Leaders, moved on to help out with the development of a brand new crew put together by the State of Arizona. Darren O'Loughlin took on the Superintendent position with Jackson IHC located in Jackson, Mississippi. A few seasoned crewmembers took on opportunity to try out new locations or take on permanent positions with state and federal agencies.

With four permanent positions to fill, Christian Berninger came over from the BLM West Desert District to fill the squad leader position. After a competitive hiring process, the two open Lead Crewmember positions were filled by Brett Branin and Justin Roach. Both have been with Lone Peak for 4 or more years. With a short amount of time to fill the Supt. position, it was decided to fill through detail only. As mentioned earlier Ryan Lafontaine (Fire Management Officer for the Northeast State – Forestry Fire and State Lands) filled the Superintendent position for about two and a half months during the fire season.

Pre-Season Assignments

After the seasonal crewmembers are laid off for the winter, the permanent employees begin the necessary preparations for the upcoming fire season. These preparations include washing and repairing gear, ordering new items needed, repairing vehicles, and hiring new crewmembers for the upcoming season.

If the opportunity arises, some of the overhead will take detail fire assignments in the spring months prior to the seasonal employee's start date. Last spring Terry Michaelis took a detail assignment as an Engine Boss Trainee, to the Uwharrie National Forest in North Carolina. The resource order for this detail was a 21 day long pre-position for severity coverage in the area. Darren O'loughlin also took an RXB2 Trainee assignment to assist with the Stewart Lake RX in the Northeast Area for the Utah DNR.



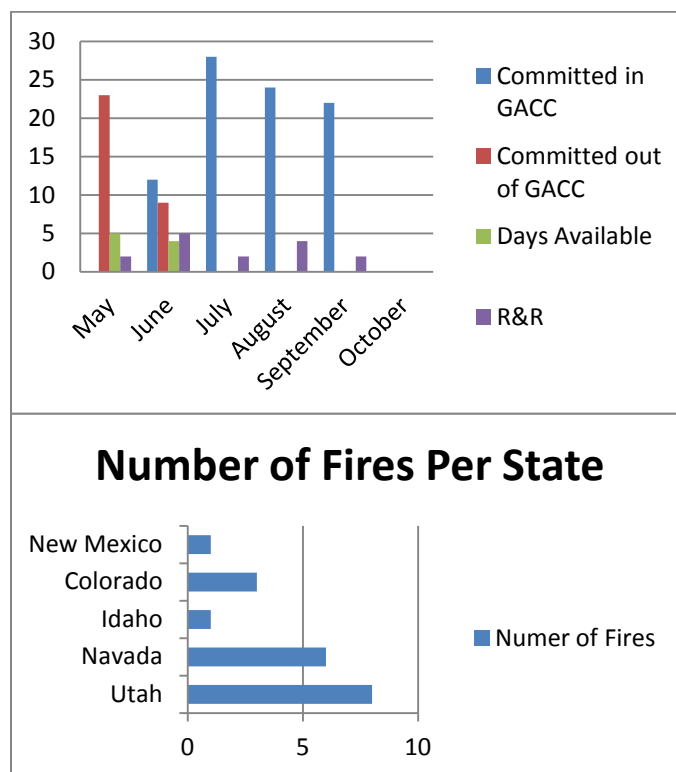
RX Burn - Uwharrie National Forest, NC

Critical Training Overview

TRAINING TOPIC	DATE	HOURS
Introductions/Expectations	16-Apr	1.5
Workcenter Welcome/Orientation	16-Apr	0.5
I-9/Gear Checkout/Vehicle Orientation	16-Apr	2
Harrassment/Defensive Driving Training	16-Apr	1
Gear Orientation/Set-Up	16-Apr	1
SOP's/SIHCO	16-Apr	3
Tool Order	16-Apr	0.25
Emergency Contacts Info	16-Apr	0.75
RT-130	17-Apr	4.75
Pack Test	17-Apr	1
Predictive Services	18-Apr	0.5
RT-212 Chainsaw Refresher	18-Apr	3
Crew Cohesion Exercise	18-Apr	1
PT Test	19-Apr	2

TRAINING TOPIC	DATE	HOURS
Safecom and Safenet/Blood Borne Path.	19-Apr	1
Chipper Operation and Safety	19-Apr	1
Water Handling	19-Apr	1
Medical Emergency Training	19-Apr	1.5
Projects Expectations	19-Apr	0.5
Field Exercises	23/24-Apr	22.5
Equipment Refurbishment Standards	25-Apr	3.5
Lessons Learned/Case Study	25-Apr	2
Leadership in Literature Discussion	25-Apr	0.5
Hazmat/Traffic Safety	25-Apr	0.5
Modular Breakouts	18/25	4
Job Hazard Analysis/6 Min for Safety	Daily	2
Briefings/After Action Reviews	Daily	1
Physical Training	Daily	10.75
Total Training Hours		74

Fire Assignments



Incident History

Mgmt. Level (e.g. I, II, III, IV, or IA)	Risk Type (WF, RX)	Incident Name	Incident Number	Number of Shifts
		2018 R3 Regional Support	NM-R03-000001	14
III	WF	358	CO-LPX-000358	2
II	WF	Horsepark	CO-SJD-000085	5
I	WF	416	CO-LPX-000416	8
III	WF	Sauls	UT-MLF-180063	7
IV	WF	Fuitland Shed	UT-NES0100161	1
IV	WF	Rough Canyon	UT-BRS-000342	3
III	WF	Willow Patch	UT-RID-180184	4
III	WF	Boone Springs	NV-EKO-010116	3
	WF	Elko Preposition	NV-EIC-100063	1
I	WF	Martin	NV-HUMX-020170	3
III	WF	Garat	ID-BOD-000536	2
III	WF	Crooked Creek	UT-SCS-180325	5
III	WF	Willow	NV-EKD-010219	1
I	WF	Goose Creek	NV-EKD-010229	4
III	WF	Dollar Ridge	UT-NES-200383	12
I	WF	Coal Hollow	UT-MLF-008333	2
II	WF	Goshute Cave	NV-ELD-040203	14
I	WF	Pole Creek	UT-UWF-000971	14

Project Work

Our first resource order this season was for Region 3 Large Fire Support where we were pre-positioned on the Lincoln National Forest in New Mexico. During this assignment we were able to help the Sacramento District on the Lincoln National Forest with some of their project work. This consisted of clearing downed trees and debris off of a network of recreational trails. It also included cutting a large fuel break around a local historical landmark called The Mexican Trestle. The crew also helped to extract some of the trestle beams out of a steep drainage and haul them out by hand, 1.5 miles so they could be placed into a local museum as historical artifacts.

Due to the busy fire season this year, the crew was only able to complete 6 days of project work while not committed to a wildland fire assignment. This work included cutting a shaded fuel break around the Payson Lakes and Maple Lake campgrounds and recreation areas. This project consisted of thinning out the smaller diameter trees, clear cutting the underbrush, and chipping the excess material to create open camp sites and usable recreational areas.



Mexican Trestle Project – Lincoln National Forest, NM

Safety (Personnel and Vehicles)

All and all the crew had a safe and efficient year during the 2018 fire season with only a handful of minor injuries. We had a few crew members deal with minor allergic reactions with some facial and extremity swelling do to wasp stings on the Pole Creek Fire in Utah. One individual did receive a minor laceration on his face from a broken branch while swamping. The individual was treated immediately at a local clinic and was back to work within a couple of hours. Last year there was a significant emphasis on the fuel geyser issue from the gas tanks on chainsaws. Our protocol that we put into place to check the bar oil tank instead of the fuel tank has resulted in zero fuel geyser incidents this season.



Field Day - Johnsons pass, UT

Seasonal Data Summary

QUESTIONS		RESPONSE
AVAILABILITY		
1	Total days crew was assembled?	165
1a	Start Date	4/16
1b	End Date	9/25
2	Total number of days assigned to incidents? (Includes travel)	119
2a	How many days were in official travel status?	14
2b	How many 14 day assignments were completed during total number of days assigned?	7
2bb	How many assignment extensions?	0
2c	Number of days on project work while assigned? (list specific type: e.g.. Trails, fuels etc.)	14
2d	Number of days on project work while not assigned?	6
3	Total number of days off?	24
3a	Days off in pay status?	7
3b	Days off in non- pay status?	15
3c	Number of days in station or otherwise and not accounted for above?	5
4	Number of days as a Type 2IA	4 – 14 Day Assignments
TRAINING		
5	Number of days in training?	2
6	Number of days of non fire mandatory training?	8
7	Number of instructor hours dedicated to non-crew training courses?	25
8a	Number of task books initiated?	4
8b	Number of task books completed?	7
TRANSPORTATION		
9	Total miles driven? (Total of all vehicles)	67,715
10	How many vehicles do you have?	5
11	Number of vehicle accidents? (Vehicle down for repair due to accident)	0
12a	Number of injury vehicle accidents?	0
12b	Vehicle accidents above where fault was Government Driver?	0
13	Number of days vehicle down for failure or repairs? (Non-accident, total all vehicles)	35
14	How many times did your crew fly? (Count each leg as a flight)	0
15a	Commercial	0
15b	Charter	0
PERSONNEL		
16	Total number of funded personnel on crew?	23
17	On average how many personnel did you have on incidents?	22
18	Total number of career appointments? (excluding apprentices)	7
19	Number of apprentices on crew?	0
20	Number of career positions that were vacant?	1
21	Number of career employee's on the crews that are eligible for retirement in the next 5 years?	0
ACCIDENTS AND INJURIES		
22	Number of non-injury incidents? (bee stings, poison oak, etc)	5
23	Number of injury accidents?	0
24	Number of injury accidents that required medical attention? (no lost time)	0
25	Number of injury accidents that required medical attention? (lost time)	0
PROJECTS		
26	Total Fuels Treatment Acres? (while assigned and unassigned)	5
27a	Mechanical? (which includes RX prep work)	0
27b	Burned?	0
Incident Support		
28	Number of shifts crew personnel filled other ICS positions while assigned?	6
28a	ICS Position(s) filled? ie; HEQB, FELB, etc	HEQB
28b	Number of days crew leadership fulfilled incident leadership positions	19

Crew Roster

