

Alta IHC 2018 Season Report



Index

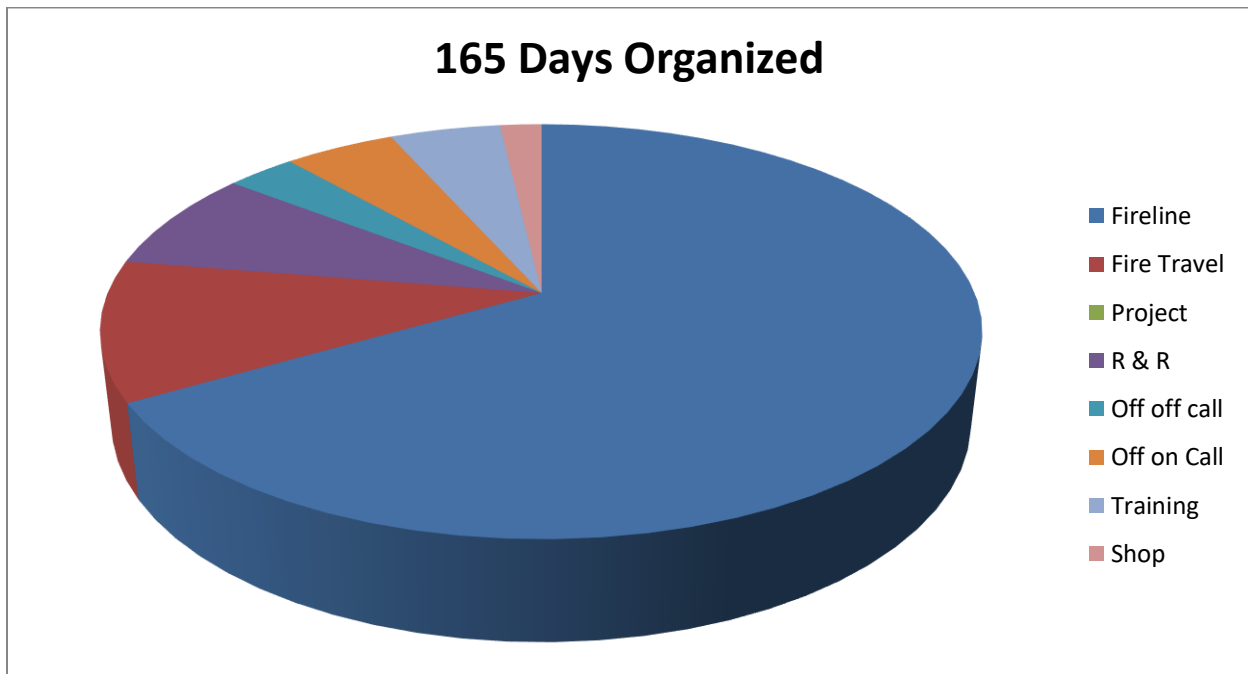
2. Index
3. Season Summary
4. Season Data
5. 2018 Fires
6. Crew Organization Chart

Season Summary

On April 30th the Alta Hotshots welcomed back 14 crewmembers from previous seasons and added 8 new hires to complete the roster for the 2018 fire season. The crew completed 80 hours of critical training and successfully passed a base review before going nationally available on May 10th. It took less than an hour after completion of the base review for the crew to receive its first assignment of the season.

The 2018 fire season was one of the busiest seasons in recent history. It was a season filled with dynamic and diverse assignments. Multiple details and training assignments were ongoing throughout the season. These assignments ranged from a season long Captain detail to incident specific FFT1 training. Overall it was a challenging yet successful season with 12 task books completed, and countless learning opportunities seized throughout the season.

The crew was assembled for 165 days and in that time was assigned to 20 fires in 9 states.

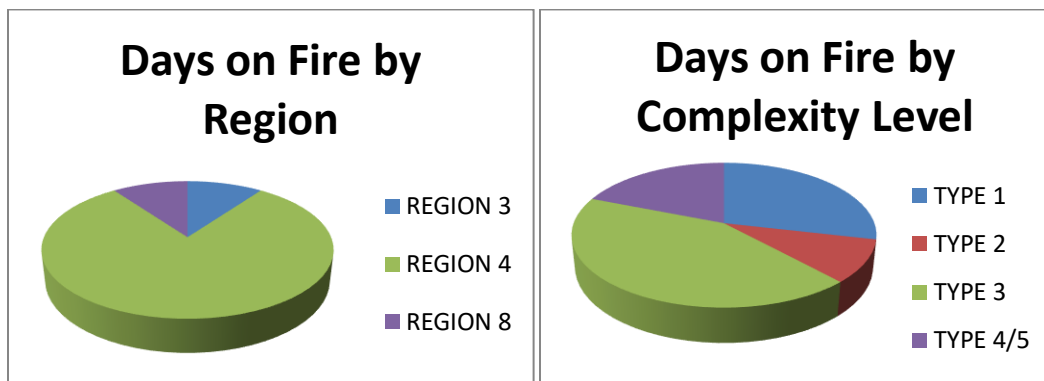


2018 ALTA IHC SEASON DATA		
QUESTIONS		RESPONSE
AVAILABILITY		
1	Total days crew was assembled?	165
1a	Start Date	4/30/2018
1b	End Date	10/11/2018
2	Total number of days assigned to incidents? <i>(Includes travel)</i>	128
2a	How many days were in official travel status?	18
2b	How many 14 day assignments were completed during total number of days assigned?	7
2bb	How many assignment extensions?	0
2c	Number of days on project work while assigned? <i>(list specific type: e.g.. Trails, fuels etc.)</i>	0
2d	Number of days on project work while not assigned?	0
3	Total number of days off?	26
3a	Days off in pay status?	13
3b	Days off in non- pay status?	13
3c	Number of days in station or otherwise and not accounted for above?	8
TRAINING		
4	Number of days in training?	8
5	Number of days of non fire mandatory training?	0
6	Number of instructor hours dedicated to non-crew training courses?	80
6a	Number of task books initiated?	22
6b	Number of task books completed?	12
TRANSPORTATION		
7	Total miles driven? <i>(Total of all vehicles)</i>	81,170
8	How many vehicles do you have?	5
9	Number of vehicle accidents? <i>(Vehicle down for repair due to accident)</i>	0
9a	Number of injury vehicle accidents?	0
9b	Vehicle accidents above where fault was Government Driver?	0
10	Number of days vehicle down for failure or repairs? <i>(Non-accident, total all vehicles)</i>	0
11	How many times did your crew fly? <i>(Count each leg as a flight)</i>	0
11a	Commercial	0
11b	Charter	0
PERSONNEL		
12	Total number of funded personnel on crew?	23
13	On average how many personnel did you have on incidents?	20
13a	Number of days crew leadership fulfilled incident leadership positions?	19
14	Total number of career appointments? <i>(excluding apprentices)</i>	8
15	Number of apprentices on crew?	0
16	Number of career positions that were vacant?	0
ACCIDENTS AND INJURIES		
18	Number of non-injury incidents? <i>(bee stings, poison oak, etc)</i>	20
19	Number of injury accidents?	3
20	Number of injury accidents that required medical attention? <i>(no lost time)</i>	0
21	Number of injury accidents that required medical attention? <i>(lost time)</i>	0
PROJECTS		
22	Total Fuels Treatment Acres? <i>(while assigned and unassigned)</i>	0
22a	Mechanical? <i>(which includes RX prep work)</i>	0
22b	Burned?	0
Incident Support		

23	Number of shifts crew personnel filled other ICS positions while assigned?	25
23a	ICS Position(s) filled? ie; HEQB, FELB, etc	HEQB, TFLD

2018 Fires

The 2018 fire season started with two out of region assignments. All other assignments were in the Great Basin geographical area.



Management Level	Date	Incident Name	Incident Number	Operational Periods
Type 1	5/10/2018	MALLARD	TX-TXS-180461	5
Type 3	5/17/2018	CALDWELL	TX-TXS-018006	2
Type 1	6/3/2018	UTE PARK	NM-N2S-000285	8
Type 3	6/10/2018	EMERY GAP	NM-N2S-000378	3
Type 3/4	6/22/2018	MONVISO	UT-NES-200303	6
Type 5	6/27/2018	310	UT-UWF-000340	1
Type 4	6/28/2018	ROUGH CANYON	UT-BRS-00342	3
Type 2	6/30/2018	WEST VALLEY	UT-DIF-00265	6
Type 4	7/10/2018	ELLERBECK	UT-SLD-000465	3
Type 3	7/14/2018	LODGEPOLE	ID-BOF-000518	7
Type 3	7/22/2018	OWYHEE	NV-DVT-010179	4
Type 3	7/25/2018	ROCK CREEK	ID-PAF-000266	2
Type 2	7/26/2018	KEITHLY	ID-PAF000267	4
Type 1	8/02/2018	RABBIT FOOT	ID-SCF-018152	11
Type 3	8/17/2018	NORTH EDEN	UT-BRS-000797	2
Type 1	8/19/2018	SOUTH SUGARLOAF	NV-ECFX-010229	14
Type 3	9/9/2018	GERMAN	ID-BOF-001024	4
Type 1	9/13/2018	BALD MOUNTAIN	UT-UWF-000971	11
Type 1	9/27/2018	ROOSEVELT	WY-BTF-001823	4

Type 3	9/30/2018	RANGE TWO	NV-ECFX-010400	5
--------	-----------	-----------	----------------	---

Crew Organization Chart

