

# Alta IHC 2016 Season Report



**Index**

2 Index

3 Season Summary

4 Season Data

5 2016 Fires

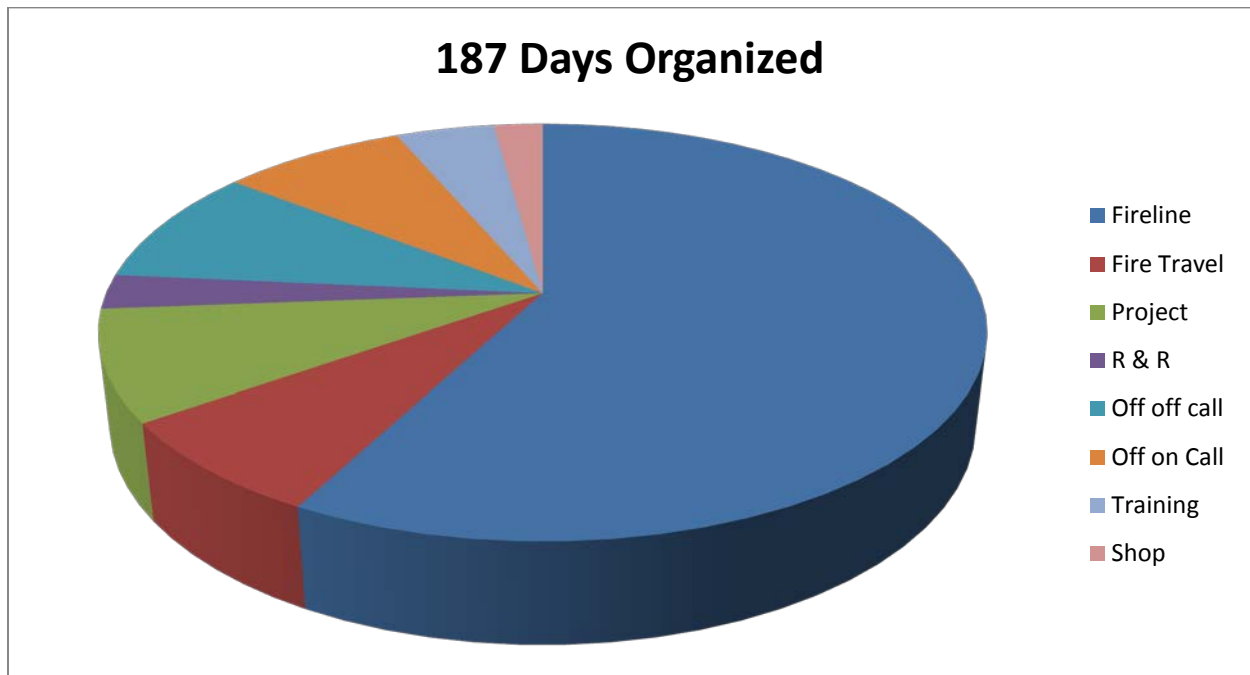
6 Crew Organization Chart

## Season Summary

On April 25th the Alta Hotshots welcomed back 18 crewmembers from previous seasons and added 4 new hires to complete the roster for the 2016 fire season. The crew completed 80 hours of basic training and successfully passed a base review before going nationally available on May 5th.

2016 was a challenging yet rewarding season for the Alta Hotshots. Multiple internal details and training assignments were ongoing throughout the season. Those assignments ranged from a season long Foreman detail to incident specific FFT1 training. Overall it was a successful season with 5 task books completed, and countless training opportunities seized throughout the season.

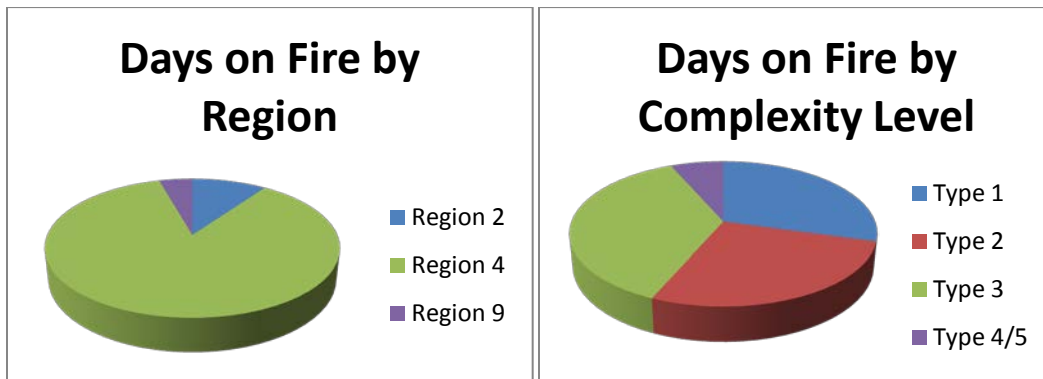
The crew was assembled for 187 days and in that time completed 4 weeks of project work and attended 19 fires throughout the US.



2016 ALTA IHC SEASON DATA		
QUESTIONS		RESPONSE
<b>AVAILABILITY</b>		
1	Total days crew was assembled?	187
1a	Start Date	4/25/2016
1b	End Date	10/27/2016
2	Total number of days assigned to incidents? <i>(Includes travel)</i>	122
2a	How many days were in official travel status?	14
2b	How many 14 day assignments were completed during total number of days assigned?	6
2bb	<b>How many assignment extensions?</b>	0
2c	Number of days on project work while assigned? <i>(list specific type: e.g.. Trails, fuels etc.)</i>	11
2d	Number of days on project work while not assigned?	16
3	Total number of days off?	37
3a	Days off in pay status?	5
3b	Days off in non- pay status?	32
3c	Number of days in station or otherwise and not accounted for above?	12
<b>TRAINING</b>		
4	Number of days in training?	8
5	Number of days of non fire mandatory training?	0
6	<b>Number of instructor hours dedicated to non-crew training courses?</b>	100
6a	<b>Number of task books initiated?</b>	44
6b	<b>Number of task books completed?</b>	5
<b>TRANSPORTATION</b>		
7	Total miles driven? <i>(Total of all vehicles)</i>	68,690
8	How many vehicles do you have?	5
9	Number of vehicle accidents? <i>(Vehicle down for repair due to accident)</i>	0
9a	Number of injury vehicle accidents?	0
9b	Vehicle accidents above where fault was Government Driver?	0
10	Number of days vehicle down for failure or repairs? <i>(Non-accident, total all vehicles)</i>	0
11	How many times did your crew fly? <i>(Count each leg as a flight)</i>	0
11a	Commercial	0
11b	Charter	0
<b>PERSONNEL</b>		
12	Total number of funded personnel on crew?	23
13	On average how many personnel did you have on incidents?	22
13a	<b>Number of days crew leadership fulfilled incident leadership positions?</b>	24
14	Total number of career appointments? <i>(excluding apprentices)</i>	8
15	Number of apprentices on crew?	0
16	Number of career positions that were vacant?	0
17	Number of career employee's on the crews that are eligible for retirement in the next 5 years?	0
<b>ACCIDENTS AND INJURIES</b>		
18	<b>Number of non-injury incidents? <i>(bee stings, poison oak, etc)</i></b>	2
19	<b>Number of injury accidents?</b>	1
20	<b>Number of injury accidents that required medical attention? <i>(no lost time)</i></b>	0
21	<b>Number of injury accidents that required medical attention? <i>(lost time)</i></b>	1
<b>PROJECTS</b>		
22	Total Fuels Treatment Acres? <i>(while assigned and unassigned)</i>	215
22a	Mechanical? <i>(which includes RX prep work)</i>	31
22b	Burned?	184
<b>Incident Support</b>		
23	Number of shifts crew personnel filled other ICS positions while assigned?	24
23a	ICS Position(s) filled? ie; HEQB, FELB, etc	RXB2, TFLD, FIRB

## 2016 Fires

The 2016 Fire season was bookended by out of region tours to the Eastern and Rocky Mountain geographical areas. All other assignments were spent in the Great Basin geographical area. All fire response occurred between May 7th and October 18th.



Management Level	Date	Incident Name	Incident Number	Operational Periods
Type 2	5/10/2016	Skibo	MN-SUF-000194	1
Type 2	5/17/2016	Honeymoon RX	MN-SUF-00230	3
Type 2	5/19/2016	Koski RX	MN-SUF-00170	2
Type 2	5/20/2016	Mitawan RX	MN-SUF-00178	2
Type 2	5/22/2016	Foss Lake	MN-SUF-000250	3
Type 3	6/11/2016	North Moore	UT-RID-006059	4
Type 3	6/16/2016	Pine Canyon	UT-DIF-000240	2
Type 3	6/18/2016	Aspen	UT-DIF-000238	2
Type 3/NIMO	6/20/2016	Saddle	UT-DIF-000219	10
Type 4	7/4/2016	Timpie	UT-SLD-000324	1
Type 3	7/5/2016	Canyon	UT-BRS-000327	2
Type 2	7/7/2016	Buck	ID-BOF-000431	4
Type 3	7/17/2016	Wally	NV-EKD-010107	2
Type 1	7/19/2016	Pioneer	ID-BOF-000539	27
Type 2	8/23/2016	Henry's Creek	ID-8BN-003174	5
Type 2	8/28/2016	Tie	ID-CTF-003181	9
Type 3	9/10/2016	Main Canyon	UT-DIF-000724	3
Type 3	9/13/2016	Fly Canyon	UT-MLF-006344	6
Type 4	9/19/2016	Black Mountain	UT-SLD-000874	2
Type 3	10/3/2016	Church Camp RX	NES-20918	1
Type 2	10/5/2016	Beulah Hill	CO-PUX-001936	3
Type 4	10/8/2016	Frey Gulch 2	CO-WRF-000661	3
Type 3	10/16/2016	Freeman	CO-WRF-000674	3

## Crew Organization Chart

