

# Lone Peak Hotshots

End of Season Report  
2015





## Contents

Season Overview.....	<a href="#">33</a>
Hiring .....	3
Training Summary.....	<a href="#">44</a>
Fire Assignments.....	<a href="#">55</a>
Incident History.....	6
Project Work .....	7
Safety .....	7
Season Data Summary.....	8
Crew Roster.....	9

## Season Overview

The 2015 fire season was unique in many ways for the crew. Due to the warm and dry weather in the spring, the crew was able to bring on ten seasonal employees in mid March to work on fuels projects around the state. This early season work allowed new individuals to learn the crew structure and expectations all while building crew cohesion. This allowed the crew to conduct our annual training at a much higher tempo. The crew in its entirety officially began its annual required training on April 29th and completed the annual readiness review on May 7th.



The crew would have to wait until mid June to respond to its first assignment as a strong el Niño weather pattern brought copious amounts of moisture to the Great Basin. The crew spent this time completing fuels projects in the southeast portion of the state. The crew would remain busy on fire assignments from mid-July through most of September supporting incidents in the Great Basin, Northern Rockies, and Pacific Northwest. By late September, wet weather once again set in throughout the intermountain west and the crew returned to project work. The crew took its final resource order on October 11th to the Walker fire in southwest Idaho.

Despite 2015 being a slower than average season in terms of the number of fire assignments and total days on fire, the crew was still able achieve several long term goals. Kris Bruington (Superintendent) was able to spend 31 days on assignment as a Division Supervisor with Great Basin Team 6, a Type 2 Incident Management Team. The crew also continued to build depth and experience through career mobility details within the crew and within the division. Additionally, the crew received new crew carriers prior to the start of the fire season.

## Hiring and Detail Assignments

For the 2015 fire season, the crew filled one permanent Lead Crew Member position and four seasonal crewmember positions. Clint Kelley accepted the LCM position in late February, coming from the Globe Hotshots. Ty Murchison, Andrew Park, Dani Sadorf, and Nicolas Stiles joined the program as crewmembers.

Career mobility details continued to play a major role in the organization of the crew. Darren O'Loughlin continued to detail as the Assistant Superintendent. Tim Casperson and Kadell Deason detailed from their LCM position to serve as squad leaders. Ryan LaFontaine completed a detail to the Northeast Area as an assistant warden. In total, Ryan acted in incident overhead roles for 45 days on local and national incidents. Matt Specht also stepped up to fill a gap on Alpha squad, taking on the responsibilities of a senior crew member.

## Training Summary

### *Critical Training Topics*

RT-212 Chainsaw Refresher	Hours	Line Construction & Mop Up Standards	1
HR/On Boarding Training	4	Crew Conduct on Incident	0.5
First Aid/CPR/Blood Borne Pathogens	4	Firing Ops Refresher	0.5
Orientation	4	Hands On- Line Construction	6
Tool Order	0.5	Spot Fire Procedure	0.5
Expectations & Intent	0.5	Medical Scenarios	1.5
Chain of Command	0.5	Helispot Construction	1
Crew SOP's	2	Pumps/Water Use Refresher	1
Pack Test	1.5	Small Unit Operations	0.5
PT Test	1	Daily Refurb	0.5
52 Cub	0.5	Vehicle Refurb Procedures	2
Weather Observations	0.5	Vehicle Use and Maintenance	0.5
Radio Programming and Use	0.5	Aviation Refresher	1
IPRG & Ops Guide Use	0.5	Leadership in Reading	0.5
Chainsaw Standards & SOP's	1	Risk Management & JHA's	2
Medical Procedures and Equipment	1	Crew Cohesion Exercises	2
Case Studies/FLA's/Lessons Learned	2	Physical Training	2
Standards for Survival	1.5	Briefings/AAR's	0.5 Daily
Entrapment Avoidance	1	6 Minutes for Safety	0.5 Daily
Individual Development Plans	2	Predictive Services	0.5 Daily

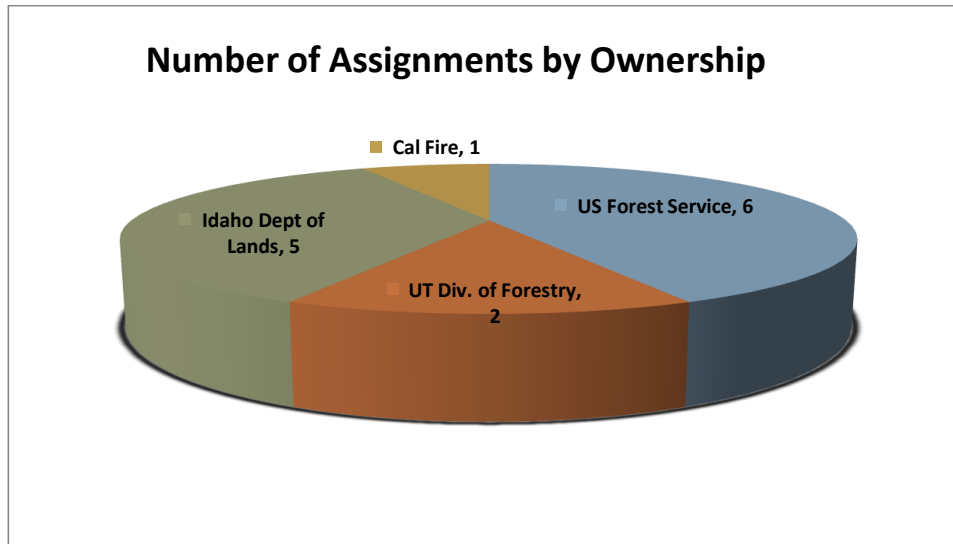
### *Season in Training*

The crew continued this season to place a strong emphasis on formal and informal training. The majority of this focus was placed in "on the job" training for individuals working towards completion of the Advanced Firefighter and Incident Commander Type 5 position task books. Other qualification training that took place included assignments working towards Crew Boss, Task Force Leader, Incident Commander Type 4, and Burn Boss Type 2. The crew issued 12 task books during the season ranging from ICT3 to FFT1. 10 PTB's were completed for qualifications including FFT1, ENGB and CRWB. In total, individuals on the crew spent 48 days in overhead positions supporting incidents both as qualified and trainees.

### *Taskbooks Initiated During 2015*

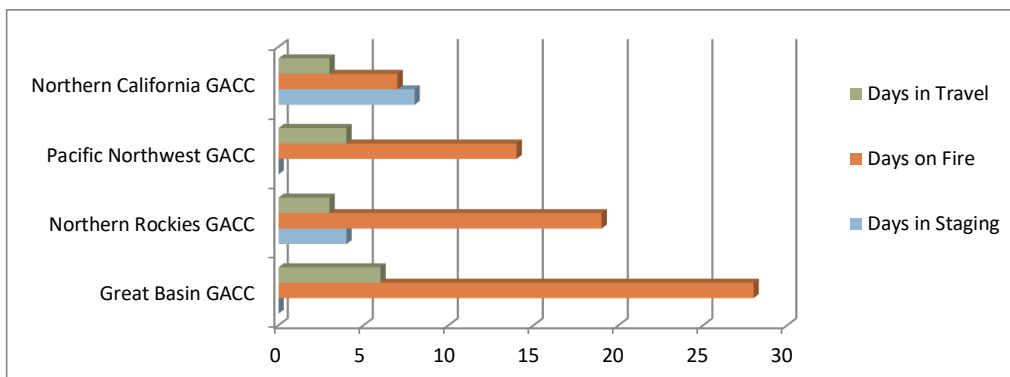
FFT1/ICT5	HEQB	CRWB	FIRB	TFLD	ICT4	ICT3
1	1	1	1	2	2	1

## Fire Assignments

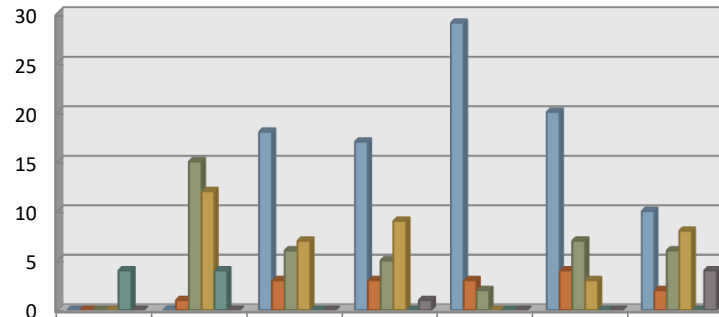


Formatted: Centered

The 2015 fire season was much slower for the crew when compared to the five and ten year average for number of days on fires and total number of assignment. Despite the slow start, the crew was able to remain busy for the second half of July and through most of October. The majority of the 98 days on assignment were spent supporting incidents in the Great Basin Geographic Area. The utilization rate for the crew this season was 49% with a five year average of 62%.



## Crew Availability and Assignments



Total Days Assigned to Incident	April	May	June	July	Aug	Sept	Oct
Days in Travel Status	0	1	3	3	3	4	2
Days Off (Including R&R)	0	15	6	5	2	7	6
Days on Project	0	12	7	9	0	3	8
Days in Training	4	4	0	0	0	0	0
Days In Station	0	0	0	1	0	0	4

## Incident History

Management Level	Dates	Incident Name	Incident Number	Fire Class Size
	06/11	2015 ONC Staging	CA-ONC-000005	NA
II	06/12-06/16	Saddle	CA-SHF-001371	F
	06/16-06/18	TNF ONC Staffing	CA-TNF-000005	N/A
III	06/18-06/20	Cook	CA-NEU-011905	D
	06/21-06/29	TNF ONC Staffing	CA-TNF-000005	N/A
III	07/03-07/07	Scipio Summit	UT-SCS-005107	D
IV	07/17-07/19	Water Hallow	UT-SCS-005138	B
IV	07/23-07/29	Hobo	ID-IPF-000607	C
	07/29-08/04	IPNF ABCD Miscellaneous	IF-IPF-000001	N/A
III	08/04-08/10	3Sisters	ID-POS-000714	D
III	08/11-08/13	Slaughterhouse	ID-SJS-000767	D
IV	08/14-08/18	Benewah Creek	ID-SJS-000867	C
II	08/19-08/27	Rapid	ID-SIS-000208	G
II	08/28-09/03	Elevenmile	ID-SCF-015218	G
II	09/07-09/20	Canyon Creek Complex	OR-MAF-015292	G
II	10/11-10/20	Walker	ID-SWS-001299	G



## Project Work

The crew completed 38 days of project work while not assigned to an incident during the 2015 fire season. The bulk of this time was spent in the southeast part of the state. The crew also conducted project work for the Wasatch Front Area and the Southwest Area offices. The projects allowed inexperienced crewmembers



to become more proficient with chainsaw operation all while helping to achieve fuels reduction goals. During those 38 days, the crew cut and piled 32 acres of fuel and completed 17 acres of pile burning. The crew also completed six days of project work for timber stand improvement while assigned to the Tahoe National Forest.



## Safety *(Vehicles & Personnel)*

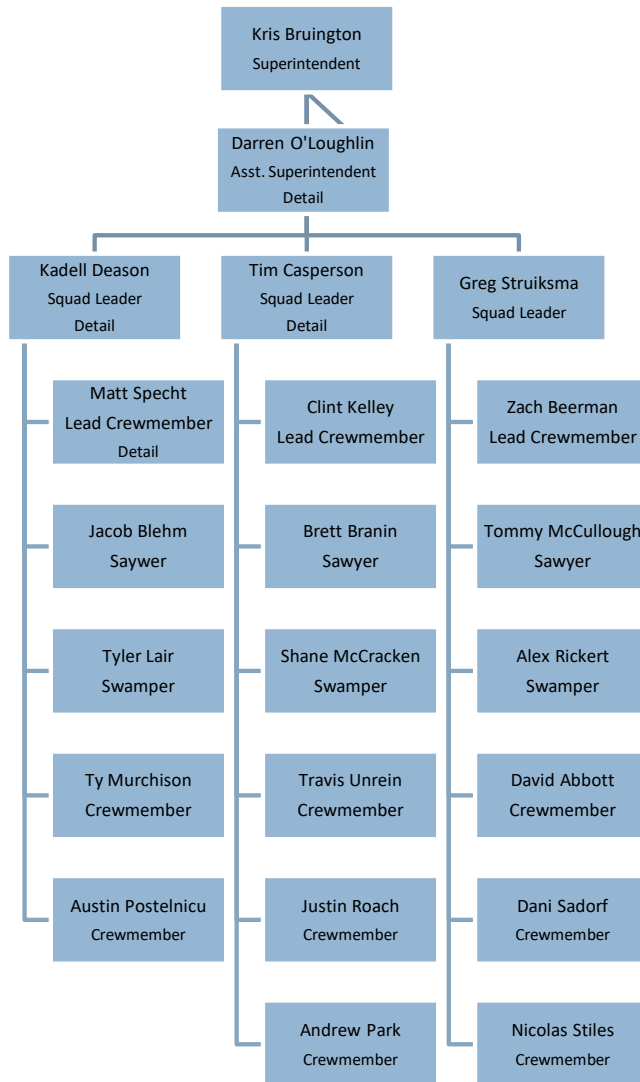
The crew, despite the high volume of exposure to hazardous environments, completed the season with a near perfect safety record. The crew experienced no time-lost injuries and had only five non-injury incidents. One serious non-injury incident that occurred was a minor case of Rhabdomyolysis during the crews annual preseason training. Despite all of the literature that has come out in the last few years, immediately recognizing the symptoms to such an injury proved to be difficult. The individual was able to complete training with no long term issues. Vehicle wise, the crew completed the season with no motor vehicle incidents or accidents in a total of 80,708 miles driven between five vehicles.

## Season Data Summary

QUESTIONS		RESPONSE
<b>AVAILABILITY</b>		
1	Total days crew was assembled?	192
1a	Start Date	4/29
1b	End Date	10/27
2	Total number of days assigned to incidents? <i>(Includes travel)</i>	98
2a	How many days were in official travel status?	14
2b	How many 14 day assignments were completed during total number of days assigned?	4
2bb	<b>How many assignment extensions?</b>	1
2c	Number of days on project work while assigned? <i>(list specific type: e.g., Trails, fuels etc.)</i>	6
2d	Number of days on project work while not assigned?	38
3	Total number of days off?	34
3a	Days off in pay status?	5
3b	Days off in non- pay status?	29
3c	Number of days in station or otherwise and not accounted for above?	1
<b>TRAINING</b>		
4	Number of days in training?	8
5	Number of days of non fire mandatory training?	0
6	<b>Number of instructor hours dedicated to non-crew training courses?</b>	24
6a	<b>Number of task books initiated?</b>	11
6b	<b>Number of task books completed?</b>	10
<b>TRANSPORTATION</b>		
7	Total miles driven? <i>(Total of all vehicles)</i>	80,708
8	How many vehicles do you have?	5
9	Number of vehicle accidents? (Vehicle down for repair due to accident)	0
9a	Number of injury vehicle accidents?	0
9b	Vehicle accidents above where fault was Government Driver?	0
10	Number of days vehicle down for failure or repairs? <i>(Non-accident, total all vehicles)</i>	11
11	How many times did your crew fly? <i>(Count each leg as a flight)</i>	0
11a	Commercial	
11b	Charter	
<b>PERSONNEL</b>		
12	Total number of funded personnel on crew?	24
13	On average how many personnel did you have on incidents?	23
13a	<b>Number of days crew leadership fulfilled incident leadership positions?</b>	48
14	Total number of career appointments? <i>(excluding apprentices)</i>	8
15	Number of apprentices on crew?	0
16	Number of career positions that were vacant?	0
17	Number of career employee's on the crews that are eligible for retirement in the next 5 years?	0
<b>ACCIDENTS AND INJURIES</b>		
18	<b>Number of non-injury incidents? <i>(bee stings, poison oak, etc)</i></b>	5
19	<b>Number of injury accidents?</b>	0
20	<b>Number of injury accidents that required medical attention? <i>(no lost time)</i></b>	2
21	<b>Number of injury accidents that required medical attention? <i>(lost time)</i></b>	0
<b>PROJECTS</b>		
22	Total Fuels Treatment Acres? <i>(while assigned and unassigned)</i>	49
22a	Mechanical? <i>(which includes RX prep work)</i>	32
22b	Burned?	17
<b>Incident Support</b>		
23	Number of shifts crew personnel filled other ICS positions while assigned?	48
23a	ICS Position(s) filled? ie: HEQB, FELB, etc	DIVS,TFLD,ICT4



## Crew Roster



### Notable Detailers:

- Shayne Ward (Lone Peak Engines)
- Phillip Oosahwe (Galena Zone, AK-BLM)
- Ryan Hopkins (Cherokee Hotshots)

