



2014

End of
Season
Report

Contents

Season Overview	3
Hiring	3
Training Summary	4
Fire Assignments	5
Incident History	7
Project Work	8
Safety	8
Season Data Summary	9
Crew Roster	10



Season Overview

The 2014 fire season started on April 16th with the annual 80 hours of critical training required of all IHC's nationwide. This two weeks of training focused on re-visiting the basic fundamentals of firefighting. Physical fitness, crew cohesion and Hotshot ethic were stressed heavily everyday during critical training. Formalized training included refreshers in fire behavior, chain saw use and maintenance, line construction, air operations and emergency medical situations. While some of this time was spent in the classroom, a heavy emphasis was placed on hands on training and field exercises. In addition to the traditional field exercises, the crew also traveled to Southern Utah to work on a fuels reduction project with an emphasis on tree felling. This addition to the critical training allowed the crew to spend several days working together away from the home unit, and was key in speeding up the cohesion process.

Hiring

The 2014 fire season the crew filled four permanent positions total. One vacant squad leader positions was filled by Greg Struiksma who came to the crew from the Okanagan-Wenatchee National Forest in Washington. The crew also converted all three Lead Crewmember positions to permanent appointments bringing the total number of permanent staff to eight. Tim Casperson, Kadell Deason and Zach Beerman accepted these new permanent positions. The crew is fortunate to have these new positions as they now bring the organization fully in line with the Standards for Interagency Hotshot Crew Operations as well as offer more stable depth to the experience and qualification level of the crew.

This season also brought several changes in positions in the form of career mobility details. Preston Ley, Asst. Superintendent, accepted an 18 month detail in mid April as the Operations Coordinator for the Lone Peak Conservation Center. Darren O'Loughlin, Squad Leader, stepped in as the Assistant Superintendent and Tim Casperson moved from the Lead Crewmember position to the open Squad Leader position. Steven Michaelis, a senior crewmember, rounded out the shift by stepping into the open Lead Crewmember position.

Hiring for seasonal positions was once again competitive for the 2014 fire season. Overall, the crew filled 13 crewmember positions. The new crewmembers to the organization came from a large geographic area and varying levels of experience. As in seasons past, the seasonal outreach was relied upon to generate the biggest response in applications. The crew expects to only fill two to four crewmember vacancies for the 2015 fire season.

Training Summary

Critical Training Topics

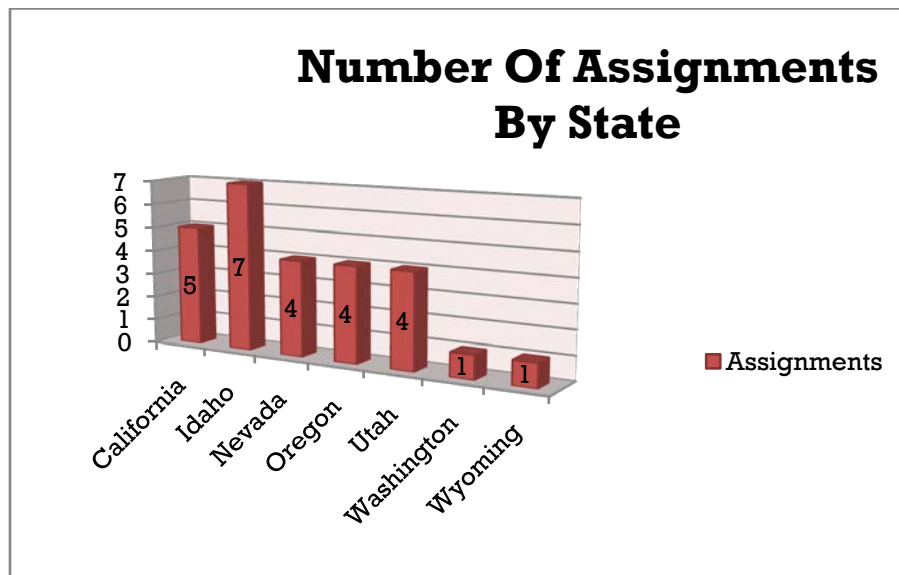
Training Description	Hours	Chipper Training	2
Orientation	1	Project Expectations	1
Introductions/Orientations	1	Vehicle Training	2
Physical Training (1 Hour Daily)	9	Fire Weather S190/S290 Refresher	1
Flight Weight	0.5	Individual Development Plans	3
Pack Test	2	Small Unit Operations	2
PT Testing	1	Proper Gear / PPE	0.5
Crew SOP's	4	Crew Carrier Specifics	1
Briefings / AAR's	1	Firing Operations Refresher	2
Chain of Command, ICS, Tool Order	1	Fire Weather Observations	2
Team Building Exercises	3	Field Radio Programming	2
LCES, 10/18, Common Denominators	1	IRPG / Ops Guide	2
52 Club	0.5	Entrapment Avoidance	1
Fireline Refresher	8	Medical Review	3
Know Your Fire Shelter	1.5	Line Construction	5
Crew Cohesion Discussion	1	Medical Scenario	1.5
Firefighter Health and Fitness	1	Pump Setup	1
6 Minutes for Safety (15 minutes daily)	1.5	Spot Fire Procedures	0.5
Ethics and Conduct for Hotshot Crews	1	Gridding	0.5
Predictive Services (Daily)	1	Mop Up	0.5
CISM Peer Support	0.5	Helicopter Safety / Flight Readiness	1
Saw Refresher with Maintenance	5	Helispot / Medivac Site Construction	1
Saw Fireline Operations	0.5	Drop Gear and Run to Safety Zone	0.5
Situational Awareness	0.5	Daily Refurb	1
Hazard Tree Falling Ops	0.5	Firing and Holding	0.5
Heat Illness Awareness	1	Maps/ GPS use	1
Air Operations Refresher	4	Lessons Learned/FLA	1.5
Pump / Hydraulics Refresher	2		

Season in Training

Training and self development are a large part of Lone Peak's daily crew operations. During the season, informal training for all crewmembers takes place on a daily basis. This allows the individual to work towards becoming an Advanced Firefighter (FFT1) through daily crew operations and exposure to various fire assignments. This pushes the ownership on the individual to seek out those opportunities daily, while allowing for a broader scale of building the FFT1 experience base among the crew. In addition to the informal training, certain positions require an individual to be placed in a formal training capacity. These formalized training positions allowed numerous single resource task books to be completed during the 2014 season.

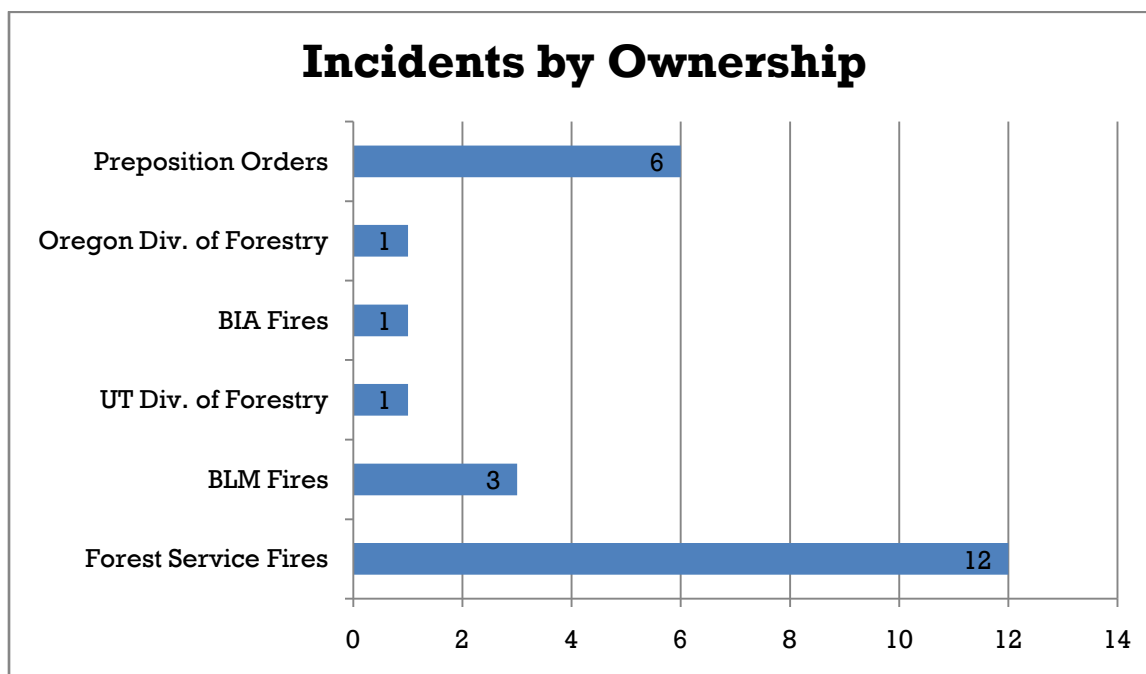
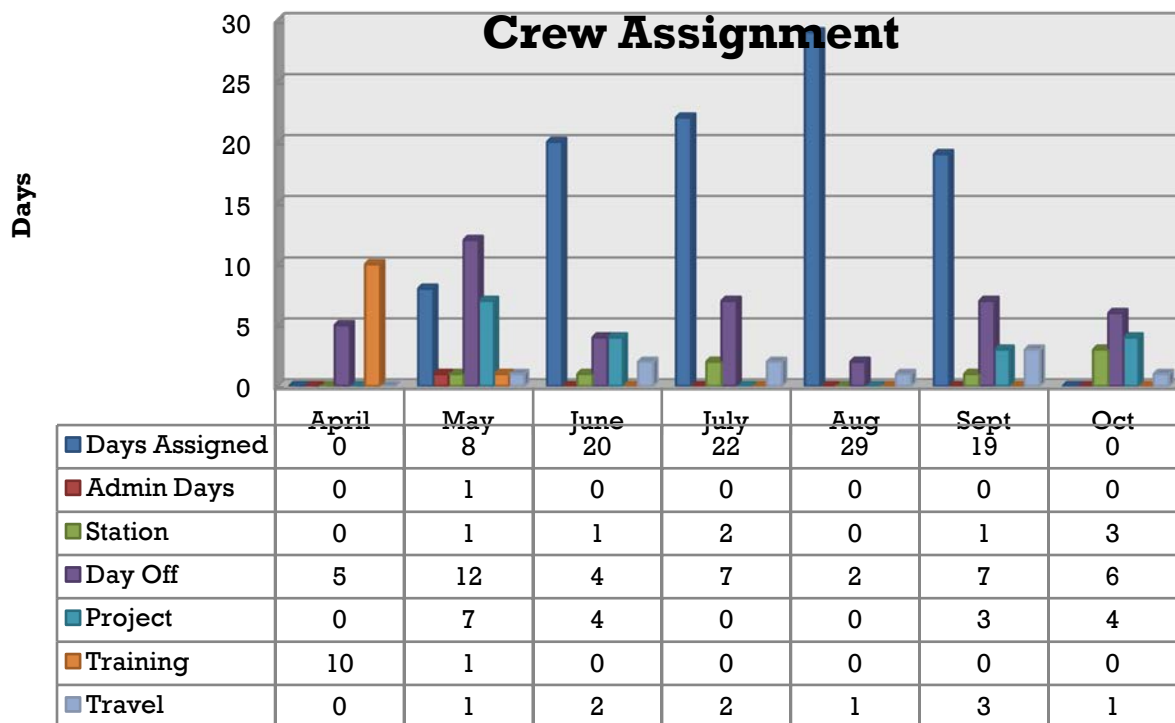
FFT1/ICT5	HECM	CRWB	FIRB	FALC	FALB
2	1	2	2	2	3

Fire Assignments



During the 2014 fire season the crew was assigned for 108 days with a five year average of 119 days on assignment. A strong El Nino weather pattern kept much of the southern half of the Western U.S. wetter than normal. The northern half of the Great Basin also experienced above normal precipitation but long term drought conditions kept fire danger high. The crew responded to the majority of assignments in the northern half of the Great Basin, the Pacific Northwest and the northern half of California. In addition to responding to a high number of assignments outside of the Eastern Great Basin, the crew also completed the first R&R in place (Washington) since the 2007 fire season.





Incident History

Management Level	Dates	Incident Name	Incident Number	Fire Class Sizw
III	5/19-5/26	HUNTER FALLS	NV-HTF-030081	E
III	6/7-6/10	ROUGH HAUL	UT-NWS-000204	G
III	6/11-6/14	POLE CREEK	WY-BTF-000005	D
	6/14-6/24	CA SQF SUPPORT PREPO	CA-SQF-001345	
III	6/28--6/30	Black Crook Creek	UT-UWF-000299	E
II	7/2-7/8	MGC COMPLEX	NV-ELD-040067	G
V	07/05	CLOVER	NV-ELD-040070	A
V	07/05	MATHEWS	NV-ELD-040077	A
III	7/14-7/19	LOGAN	ID-PAF-014021	C
	7/19-7/20	2014 PAC PREPOSITION	ID-PAF-014033	
II	7/20-7/25	SIMPSON COMPLEX	UT-SLD-000546	G
II	7/25-7/27	BLACK FIRE	UT-UWF-000567	D
	7/31-8/1	2014 PAYETTE ABCD MISC	ID-PAF-014002	
IV	8/2	CRACKER JACK	ID-PAF-014002	A
V	8/2	FOX	ID-PAF-014002	A
	8/3-8/4	2014 PAYETTE ABCD MISC	ID-PAF-01002	
IV	8/5-8/6	HITT	ID-PAF-014058	B
II	8/6-8/15	DEVILS ELBOW	WA-COA-000168	F
	8/18-8/19	OR-RSF-ABCD MISC	OR-RSF-140001	
III	8/19-8/21	OLD BLUE MTN COMPLEX	OR-712S-030015	C
	8/21-8/22	OR-SMRD-ABCD MISC	OR-RSF-140759	
II	8/22-9/3	DECEPTION COMPLEX	OR-WIF-140274	F
II	9/13-9/17	SILVERADO	CA-CNF-002873	F
II	9/17-9/18	JUNE	CA-INF-001351	F
I	9/18-9/24	KING	CA-ENF-023461	G
III	9/25-9/27	CASCADE	CA-TMU-023485	C
I	9/27-9/30	KING	CA-ENF-023461	G



Project Work

With the fire season being slower than average, the crew was able to complete 18 days on projects within the state of Utah. Project work included hazard tree mitigation, hazard fuel reduction as part of Community Wildfire Protection Plans, pile burning, and bark beetle sanitation. In early May the crew was able to complete an interagency hazard tree removal project along State Highways 14 and 143. Cooperating agencies included the Dixie National Forest, State of Utah Division of Forestry, and the Utah Department of Transportation. The time spent early on in the season working on tree felling projects proved invaluable as the crew would be assigned to the majority of incidents in a timber fuel type. The crew also spent four days on project work while assigned to preposition resource orders. Within those four days, the crew completed line prep for 800 acres of planned prescribed fire on the New Meadows District of the Payette National Forest.

Safety

Vehicles

The crew reported zero vehicle accidents in all 68,392 miles driven between four vehicles. The 2014 fire season will be the last for the current crew carriers. Since receiving the current crew carriers in 2009, the crew has had very few mechanical issues that resulted in vehicles being down for any duration of time. This season, the high mileage of the vehicles resulted in one crew carrier being down mechanically for a total of eight days while on assignment. The other two crew carriers also experienced mechanical issues but the crew was fortunate that the repairs could be completed while the crew was either in station or unavailable for assignment.

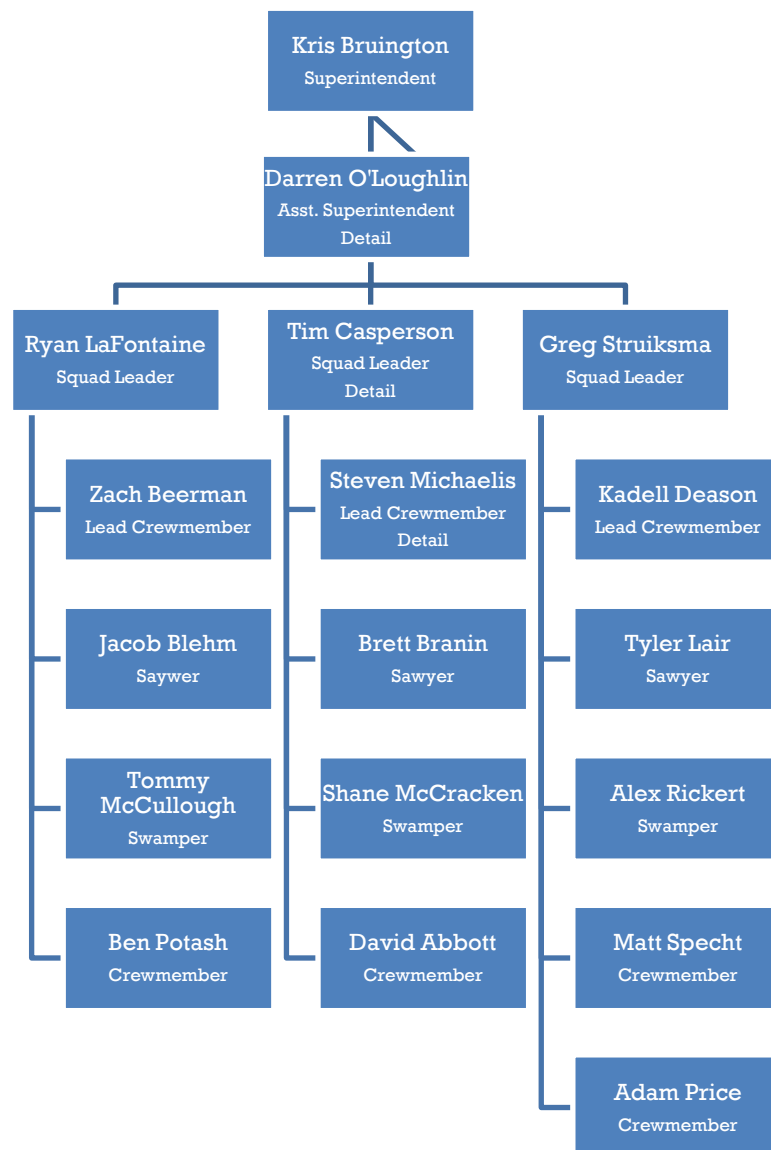
Personnel

Despite all the hazardous conditions the crew was exposed to throughout the fire season, only two injuries were severe enough to warrant time lost. The first injury was a minor burn to the foot as a result of walking through an ash pit. The individual was able complete the fire assignment and only lost time after the crew returned home and was on project. The second injury was a meniscus tear in the left knee and required arthroscopic surgery. The individual is completing rehabilitation and is expected to return for the 2015 fire season. Other than the two lost time injuries, there were the usual bumps, bruises, and poison oak incidents that come with the daily operations of wildland fire.

Season Data Summary

QUESTIONS		RESPONSE
AVAILABILITY		
1	Total days crew was assembled?	184
1a	Start Date	4/16
1b	End Date	10/12
2	Total number of days assigned to incidents? <i>(Includes travel)</i>	108
2a	How many days were in official travel status?	20
2b	How many 14 day assignments were completed during total number of days assigned?	5
2bb	How many assignment extensions?	1
2c	Number of days on project work while assigned? <i>(list specific type: e.g.. Trails, fuels etc.)</i>	4
2d	Number of days on project work while not assigned?	18
3	Total number of days off?	39
3a	Days off in pay status?	7
3b	Days off in non- pay status?	32
3c	Number of days in station or otherwise and not accounted for above?	8
TRAINING		
4	Number of days in training?	11
5	Number of days of non fire mandatory training?	1
6	Number of instructor hours dedicated to non-crew training courses?	32
6a	Number of task books initiated?	9
6b	Number of task books completed?	7
TRANSPORTATION		
7	Total miles driven? <i>(Total of all vehicles)</i>	68,392
8	How many vehicles do you have?	4
9	Number of vehicle accidents? (Vehicle down for repair due to accident)	0
9a	Number of injury vehicle accidents?	0
9b	Vehicle accidents above where fault was Government Driver?	0
10	Number of days vehicle down for failure or repairs? <i>(Non-accident, total all vehicles)</i>	8
11	How many times did your crew fly? <i>(Count each leg as a flight)</i>	0
11a	Commercial	
11b	Charter	
PERSONNEL		
12	Total number of funded personnel on crew?	23
13	On average how many personnel did you have on incidents?	23
13a	Number of days crew leadership fulfilled incident leadership positions?	13
14	Total number of career appointments? <i>(excluding apprentices)</i>	8
15	Number of apprentices on crew?	0
16	Number of career positions that were vacant?	0
17	Number of career employee's on the crews that are eligible for retirement in the next 5 years?	0
ACCIDENTS AND INJURIES		
18	Number of non-injury incidents? <i>(bee stings, poison oak, etc)</i>	1
19	Number of injury accidents?	2
20	Number of injury accidents that required medical attention? <i>(no lost time)</i>	0
21	Number of injury accidents that required medical attention? <i>(lost time)</i>	2
PROJECTS		
22	Total Fuels Treatment Acres? <i>(while assigned and unassigned)</i>	820
22a	Mechanical? <i>(which includes RX prep work)</i>	815
22b	Burned?	5
Incident Support		
23	Number of shifts crew personnel filled other ICS positions while assigned?	13
23a	ICS Position(s) filled? ie; HEQB, FELB, etc	DIVS,TFLD,ICT4

Crew Roster



As in years past, the crew brought in several detailers throughout the season. Detailers from outside the crew were utilized as crewmembers, squad leaders and crew boss trainees. Notable detailers include:

- Justin Roach (Dromedary Peak Fuels Crew) *Will return to the crew in 2015*
- Austin Postelnicu (Dromedary Peak Fuels Crew) *Will return to the crew in 2015*
- Joe Williams (Uinta-Wasatch-Cache N.F.-Squad 8-1)
- James Norvell (McCall Smokejumpers)
- Phillip Oosahwe (Galena Zone, AK-BLM)
- Phillip Roth (Payette N.F.-Hells Canyon Wildland Fire Module)

