

Alta Handcrew 2013 Season Report



Index

2 Index

3 Season Summary

4 Season Data

5 2014 Fires

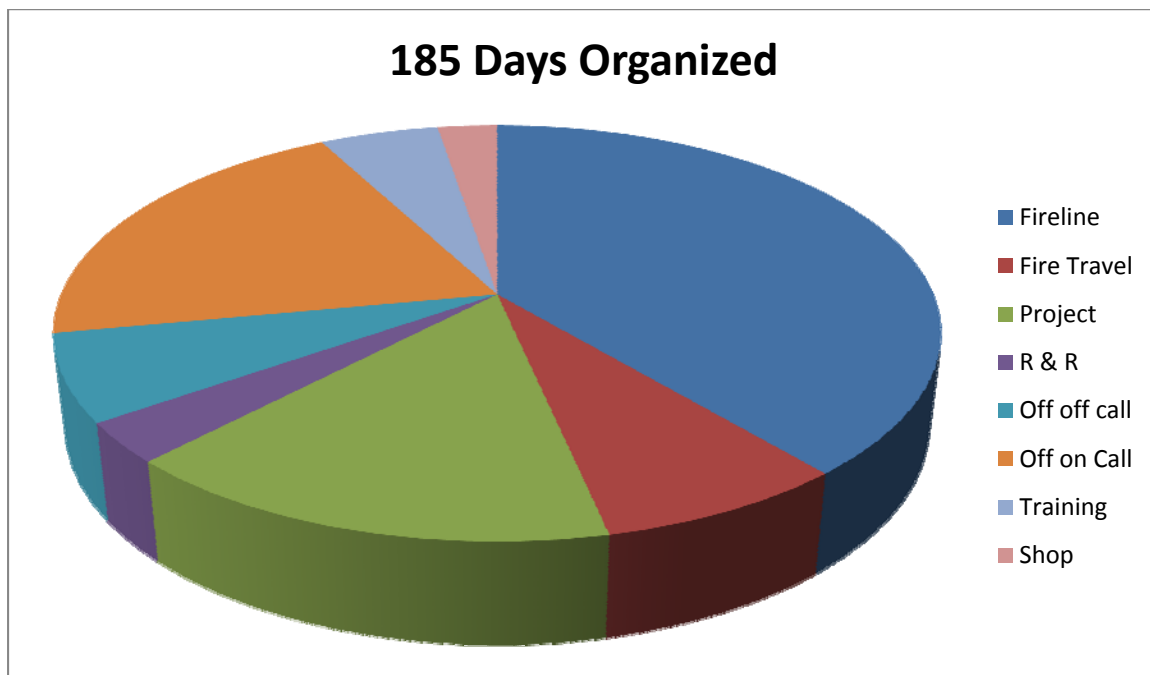
6 Crew Organization Chart

Season Summary

On April 24th of 2013 the Alta Handcrew welcomed back 14 crewmembers from previous seasons and 2 detailers from 2012. The crew added 3 new hires to the roster and by the end of the season two fillers from Dromedary Peaks were on the manifest. The crew completed 100 hours of basic training and completed a base review before going available as a Type 2 IA crew on May 8th at 1600.

Having previously completed Hotshot peer reviews in 2012, we planned an embedded review this season to continue working toward IHC certification. It occurred on the East Fork fire in Colorado and lasted 13 operational periods. The review was successful and the embedded reviewer recommended that the Great Basin Operations committee schedule Alta for certification review.

The crew was assembled for 185 days and in that time completed 9 weeks of project work and attended 10 fires throughout the west.

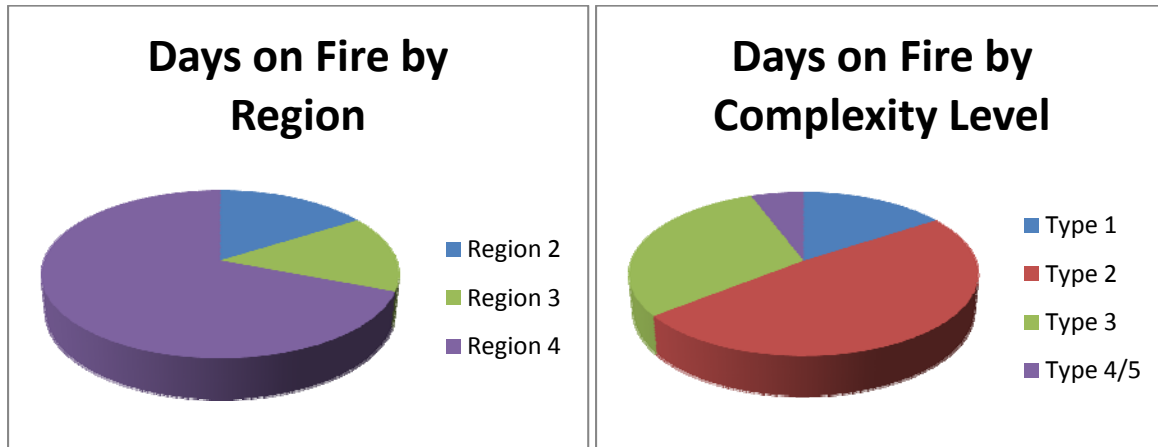


2013 ALTA HANDCREW SEASON DATA

AVAILABILITY		
1	Total days crew was assembled?	185
1a	Start Date	4/30
1b	End Date	10/31
2	Total number of days assigned to incidents? <i>(Includes travel)</i>	90
2a	How many days were in official travel status?	15
2b	How many 14 day assignments were completed during total number of days assigned?	3
2bb	How many assignment extensions?	0
2c	Number of days on project work while assigned?	1
2d	Number of days on project work while not assigned?	30
3	Total number of days off?	52
3a	Days off in pay status?	6
3b	Days off in non- pay status?	46
3c	Number of days in station or otherwise and not accounted for above?	5
TRAINING		
4	Number of days in training?	10
5	Number of days of non fire mandatory training?	2
6	Number of instructor hours dedicated to non-crew training courses?	158
6a	Number of task books initiated?	6
6b	Number of task books completed?	5
TRANSPORTATION		
7	Total miles driven? <i>(Total of all vehicles)</i>	35,441
8	How many vehicles do you have?	4
9	Number of vehicle accidents? (Vehicle down for repair due to accident)	0
9a	Number of injury vehicle accidents?	0
9b	Vehicle accidents above where fault was Government Driver?	0
10	Number of days vehicle down for failure or repairs?	134
11	How many times did your crew fly? <i>(Count each leg as a flight)</i>	0
PERSONNEL		
12	Total number of funded personnel on crew?	21
13	On average how many personnel did you have on incidents?	20
13a	Number of days crew leadership fulfilled incident leadership positions?	19
14	Total number of career appointments? <i>(excluding apprentices)</i>	5
15	Number of apprentices on crew?	0
16	Number of career positions that were vacant?	0
17	Number of career employees eligible for retirement in the next 5 years?	0
ACCIDENTS AND INJURIES		
18	Number of non-injury incidents? <i>(bee stings, poison oak, etc)</i>	2
19	Number of injury accidents?	3
20	Number of injury accidents that required medical attention? <i>(no lost time)</i>	1
21	Number of injury accidents that required medical attention? <i>(lost time)</i>	2
PROJECTS		
22	Total Fuels Treatment Acres? <i>(while assigned and unassigned)</i>	32
22a	Mechanical? <i>(which includes RX prep work)</i>	32
22b	Burned?	0

2014 Fires

Alta started the 2013 season with a roll to the Southwest, then responded to a fire in the Rocky Mountain area. Alta responded to more fires in the Great basin than any other geographical area. All fire response occurred between June 1st and September 10th.



Management Level	Date	Incident Name	Incident Number	Operational Periods
IV	6/3/2013	Observatory	NM-R03-000001	1
II	6/5/2013	Thompson Ridge	NM-N6S-000230	4
II	6/10/2013	Silver	NM-GNF-000230	7
II	6/21/2013	East Fork	CO-GMF-000075	13
III, IV	7/9/2013	Sinbad	UT-MLF-007173	7
III, IV	7/16/2013	Wignal	UT-UWF-000414	3
III	7/21/2013	Thunder City	ID-PAF-013040	14
II	8/8/2013	Mccan	ID-TFD-000336	9
I, II, III	8/17/2013	Beaver Creek	ID-TFD-000337	11
II	9/2/2013	Kelley	ID-STF-000423	8

Crew Organization Chart

